



ROBINSON SURVEYING

MEMBER-PROFESSIONAL LAND SURVEYORS OF OHIO
12355 LIARS CORNER ROAD, MILLFIELD, OHIO 45761

ALAN D. ROBINSON
Registered Land Surveyor

TELEPHONE
(740) 593-8774

TRACT "D" **DESCRIPTION OF A 14.638 ACRE TRACT**

Situated in Fraction 7, Section 14, Town 5, Range 13, Canaan Township, Athens County, Ohio, and being a part of a 111.74 acre tract now belonging to Elizabeth Weiland Blackford Family Trust and described in Volume 149 Page 290 Official Records of Athens County and being more particularly described as follows:

Commencing at a found Stone at the Northeast corner of Fraction 7;
thence, following the North line of said Fraction, North 86 degrees 21 minutes 59 seconds West, a distance of 810.48 feet to an iron pin set, passing an iron pin set at 652.45 feet;
thence, leaving said fraction line on a random line, South 37 degrees 22 minutes 17 seconds West, a distance of 1116.86 feet to an iron pin set;
thence South 52 degrees 28 minutes 48 seconds East, a distance of 191.64 feet to an iron pin set;
thence South 10 degrees 56 minutes 04 seconds West, a distance of 317.98 feet to a point in County road 90, passing an iron pin set at 292.98 feet, said point being the POINT OF BEGINNING of the following described tract;
thence, leaving said Road, South 10 degrees 56 minutes 04 seconds West along said line, a distance of 415.47 feet to an iron pin set, passing an iron pin set at 25.00 feet;
thence South 88 degrees 29 minutes 07 seconds West, a distance of 200.14 feet to a point in township Road 96 passing an iron pin set at 175.14 feet;
thence, following said Road, South 33 degrees 54 minutes 07 seconds West, a distance of 105.26 feet to a point in a bridge;
thence, leaving said Road and said Bridge following a creek, South 1 degree 13 minutes 40 seconds East, a distance of 158.91 feet to a point;
thence South 72 degrees 03 minutes 30 seconds East, a distance of 95.13 feet to a point;
thence South 17 degrees 35 minutes 04 seconds East, a distance of 60.88 feet to a point;
thence North 49 degrees 31 minutes 06 seconds East, a distance of 90.14 feet to a point;
thence North 62 degrees 52 minutes 40 seconds East, a distance of 53.54 feet to a point;
thence South 15 degrees 04 minutes 59 seconds West, a distance of 57.97 feet to a point;
thence South 13 degrees 39 minutes 22 seconds West, a distance of 99.04 feet to a point;
thence South 34 degrees 03 minutes 35 seconds West, a distance of 26.64 feet to a point;
thence, leaving said Creek, South 87 degrees 27 minutes 03 seconds East, a distance of 799.70 feet to an iron pin set;
thence North 2 degrees 49 minutes 22 seconds East, a distance of 707.40 feet to a point in County Road 90, passing an iron pin set at 682.40 feet;
thence, following said road, North 76 degrees 00 minutes 55 seconds West, a distance of 691.79 feet to the POINT OF BEGINNING; said described tract containing 14.638 acres (637,649.9625 square feet).

Bearings are based on a previous Survey of the West line completed by S.H. Hibbard February 10, 1908 and are used to denote angles only.

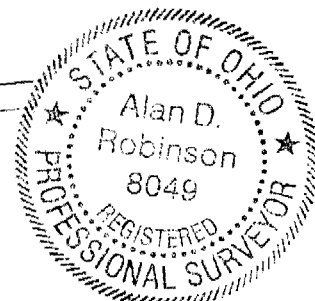
Subject to all easements and right-of-way of record.

All iron pins set are 5/8 inch by 30-inch long rebar with a yellow cap stamped Alan Robinson RLS 8049.

Alan D. Robinson P.S. 8049 bases the above description on a field Survey completed April 23, 2001,

Alan D. Robinson

Description checked for
Mathematical Accuracy
ATHENS COUNTY
ENGINEER'S OFFICE
BY: *K. Canty*
DATE: *4/23/01*





ROBINSON SURVEYING

12355 Liars Corner Rd.
Millfield, Ohio 45761
(740) 593-8774
1-800-296-9984

Line	Bearing	Distance
1	S 57°14'01"E	196.06'
2	N 86°21'59"W	158.03'
3	S 52°28'48"E	191.64'
4	S 31°25'42"W	180.64'
5	N 48°21'40"W	115.45'
6	N 45°14'31"W	91.59'
7	N 11°17'51"W	103.85'
8	S 87°13'21"E	93.72'
9	S 57°14'01"E	196.06'
10	S 52°28'48"E	191.64'
11	S 88°29'07"W	200.14'
12	S 48°21'40"E	115.45'
13	N 31°25'42"E	180.64'
14	N 37°22'17"E	225.16'
15	S 88°29'07"W	200.14'
16	S 33°54'07"W	105.26'
17	S 1°13'40"E	158.91'
18	S 72°03'30"E	95.13'
19	S 17°35'04"E	60.88'
20	N 49°31'06"E	90.14'
21	N 62°52'40"E	53.54'
22	S 15°04'59"W	57.97'
23	S 13°39'22"W	99.04'
24	S 34°03'35"W	26.64'

William, Jr. &
Patricia Ann
Brammer
294-399 D. R.
382-219 D.R.

Daniel F.
Lowenstein
178-17 O.R.

Rexford A. &
Lynda L.
Storer
355-305 D.R.

John A.
Edwards
299-47 D.R. &
296-459 D.R.

28.430
Acres Surveyed
By: John Branner August 1983

Elizabeth Weiland
Blackford Family Trust
202-536 D.R. 284-134 D.R.
149-290 O.R.
111.74 Acres

Joseph D. & Sandra Jollick 348-801 D.R.

Description checked for
Mathematical Accuracy
ATHENS COUNTY
ENGINEER'S OFFICE

BEARING REFERENCE

BASED ON WEST LINE OF A SURVEY
COMPLETED BY S. H. HIBBARD 2/10/1908
AND ARE USED TO DENOTE ANGLES ONLY

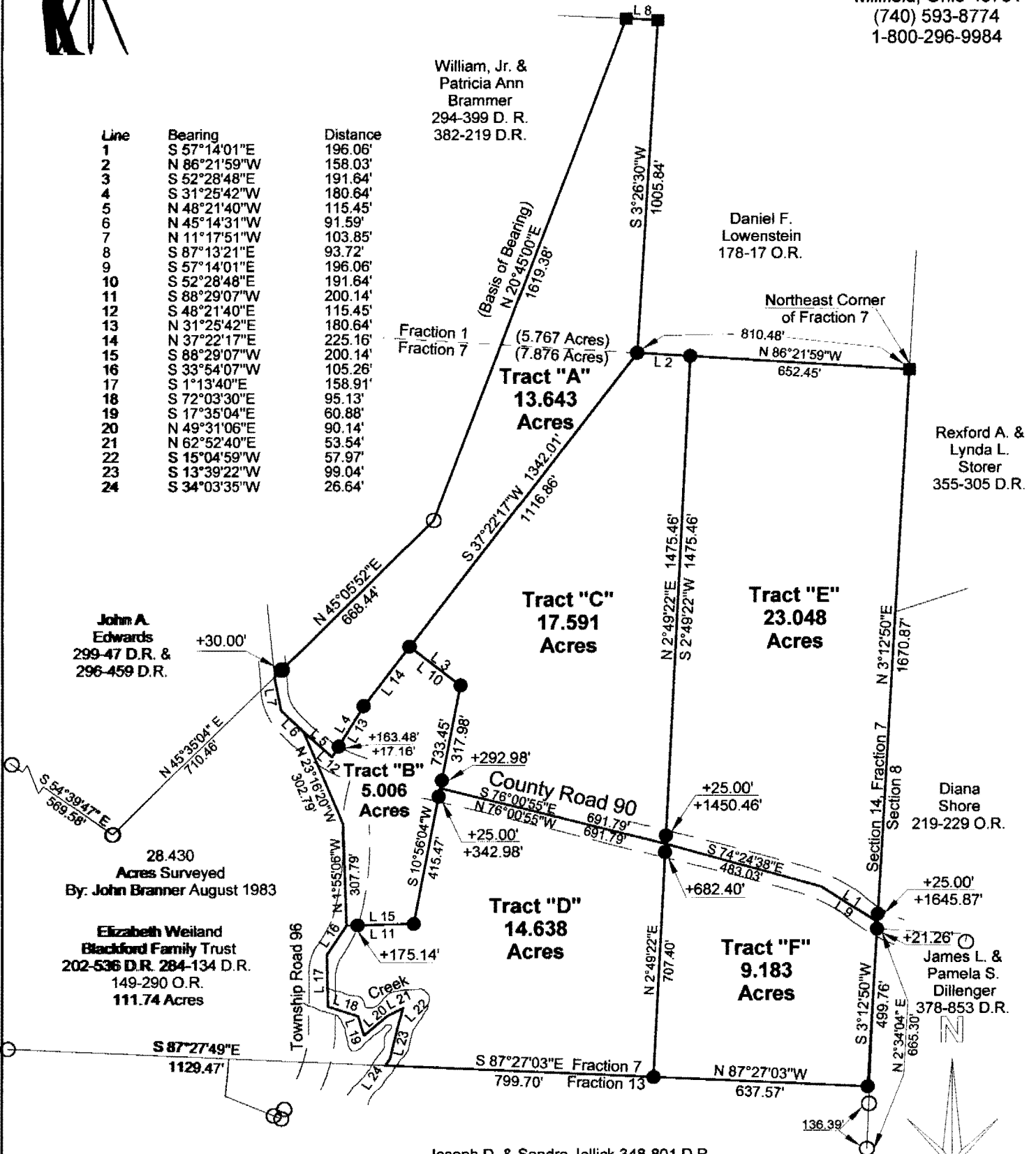
- = Iron Pin Set W/A Yellow Cap
- = Iron Pin Found
- = Stone Found
- M = Measured
- D = Deed
- C = Calculated

- References**
- Deeds as Noted
 - Previous Surveys
 - Current Tax Plats
 - Existing Monumentation

Graphic Scale



1 INCH = 400 FEET



Plat of Survey of 5 Tracts
 Surveyed for: Mary Workman Date 04/23/2001
 Fractions 1 & 7, Section 14
 Town 5, Range 13, Canaan Township
 Athens County, State of Ohio
 Alan D. Robinson Registered Professional Land Surveyor No. 8049

