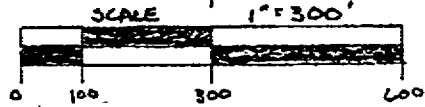


BEING A PART OF THE SOUTH HALF OF SECTION 24, TOWNSHIP - S-NORTH,
 RANGE - 13-WEST, CANAAN TOWNSHIP, ATHENS COUNTY, STATE OF OHIO.

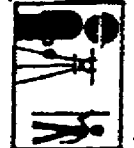
NOTE: BEARINGS WERE DERIVED FROM
 MAGNETIC TAKEN OCT. 20, 1986.



0000-P03
 (614) 949-2524 Office

C. THOMAS SMITH
and Associates Surveying

P. O. BOX 393
 Racine, Ohio 45771



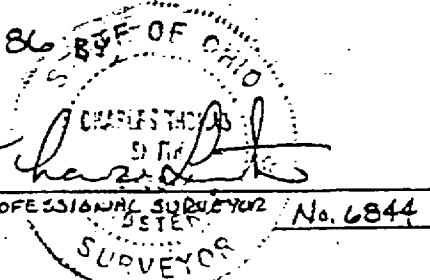
LEGEND

- - 5/8" IRON PIN SET
- △ - P.K. NAIL SET
- - STONE FOUND

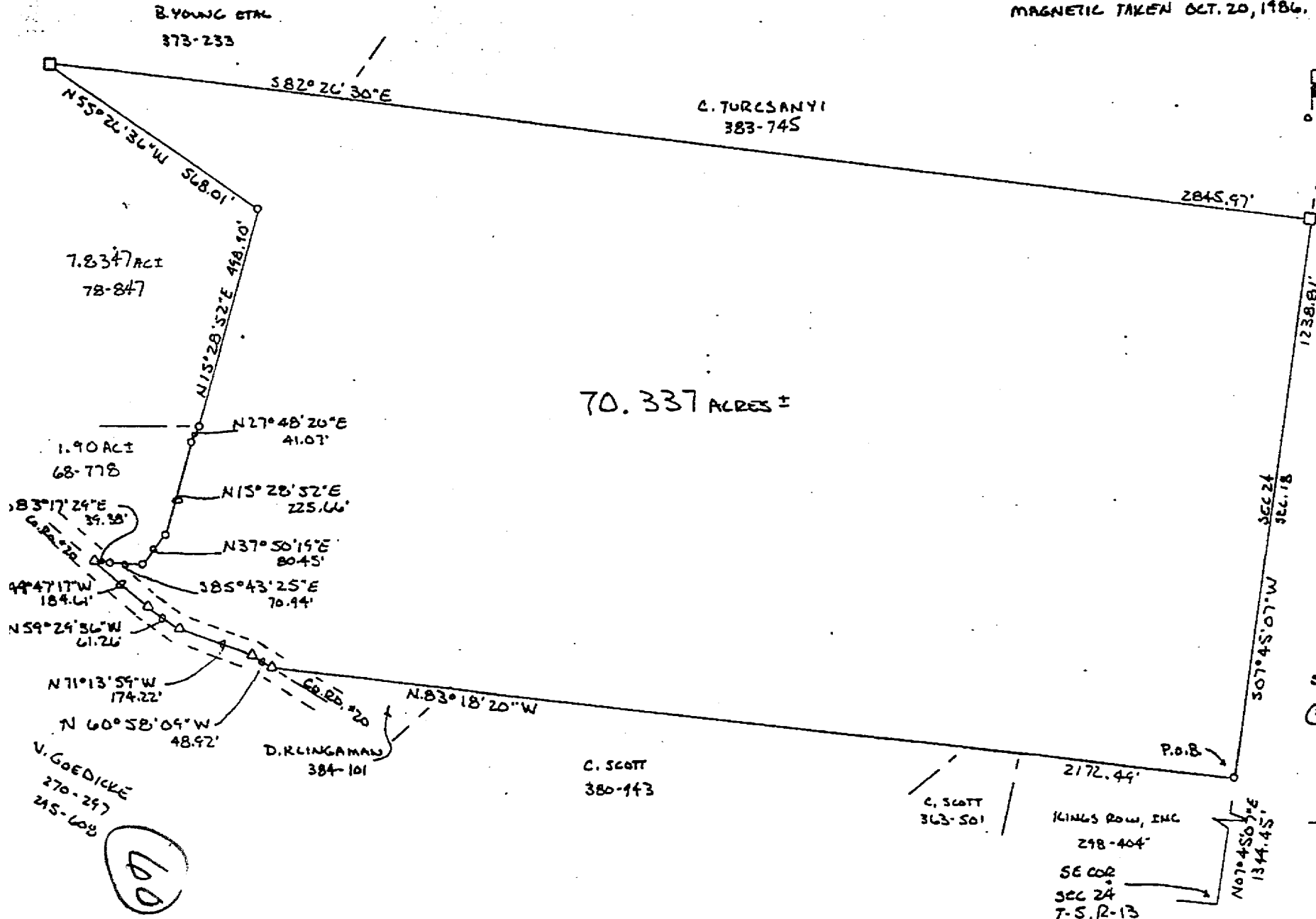
REFERENCES

- CURRENT TAX PLATS
- U.S.G.S. TOPO MAPS
- AERIAL PHOTOGRAPHS
- DEEDS: AS NOTED ON PLAT

PLAT PREPARED FROM AN ACTUAL
 SURVEY MADE ON THE 20TH DAY OF
 OCTOBER, 1986



949-2955
 Home



60