

L E G A L   D E S C R I P T I O N

Situated in Section 26 of T.5, R.13, Canaan Township, Athens County, Ohio and being more particularly described as follows:

Beginning at the South-west corner south-east Quarter of Section 26,

THENCE North 01 degrees 12 minutes 31 seconds West for a distance of 283.88 feet to an iron pin set;  
THENCE, North 73 degrees 11 minutes 30 seconds East for a distance of 200.14 feet to an iron pin at the North-west corner of a 2.00 acre tract;  
THENCE, along the West-line of said tract, South 07 Degrees 00 Minutes West for a distance of 191.10 feet to an iron pin at the South-west corner of said tract;  
THENCE, along the South-line of said tract, North 73 degrees 30 minutes 59 seconds East for a distance of 524.70 feet to a railroad spike found at the center line of Township Road 92;  
THENCE South 28 degrees 43 minutes 50 seconds East for a distance of 75.11 feet along said Township road to a railroad spike found;  
THENCE South 31 degrees 59 minutes 49 seconds East for a distance of 269.91 feet to a railroad spike found;  
THENCE South 88 degrees 13 minutes 40 seconds West for a distance of 213.50 feet leaving Township road 92, to an iron pin found;  
THENCE South 02 degrees 20 minutes 05 seconds East for a distance of 684.35 feet to an iron pin found  
THENCE South 88 degrees 13 minutes 40 seconds West for a distance of 1194.41 feet to an iron pin found  
THENCE North 02 degrees 20 minutes 05 seconds West for a distance of 704.35 feet to an iron pin found  
THENCE North 88 degrees 13 minutes 40 seconds East for a distance of 563.76 feet to the POINT OF BEGINNING; said described tract containing 23.61 acres.

Subject to all easements and rights of way of record

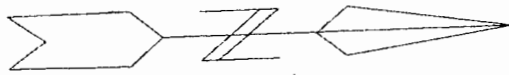
Together with and subject to covenants, easements, and restrictions of record.

The above description prepared by John M. Branner P.S. 6805 and based in part on an existing survey by Gerald Bayha P.S.

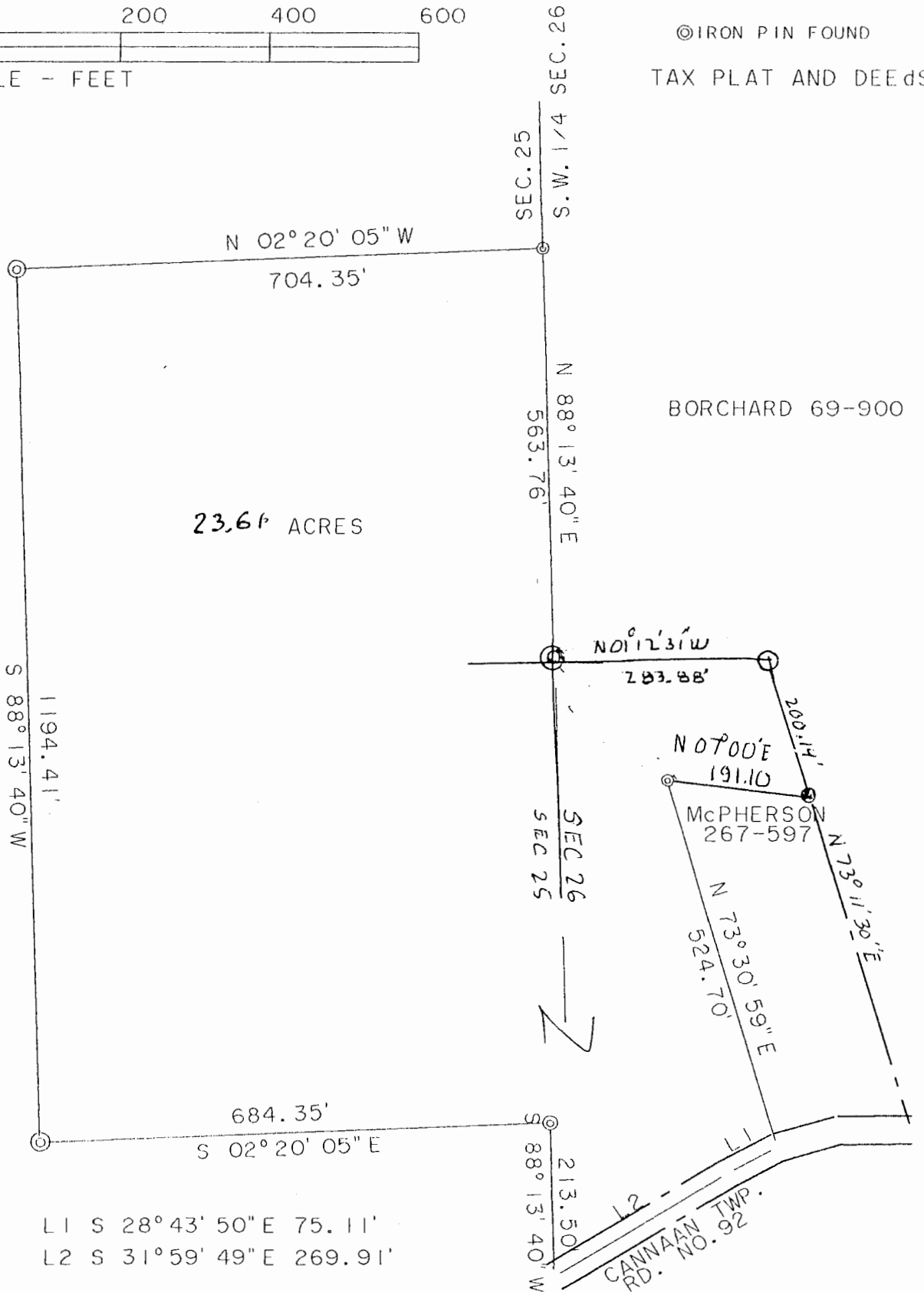
Description checked for  
Mathematical Accuracy  
ATHENS COUNTY  
ENGINEER'S OFFICE  
BY: S. Blausen  
DATE: 3-15-96

242

CAN 26



© IRON PIN FOUND  
TAX PLAT AND DEEDS



BORCHARD 69-900

SURVEY OF A 23.61 ACRE TRACT IN  
SECTION 26 T.5R.13 CANAAN TOWNSHIP  
ATHENS COUNTY OHIO  
SURVEYED OCT. 1995

*John M. Branner*

JOHN M. BRANNER P. S. 6805  
12500 N. PEACH RIDGE ROAD  
ATHENS OHIO



243