

**BRANNER SURVEYING
12500 N. PEACH RIDGE ROAD
ATHENS, OHIO 45701**

Situated in Section 26, T.5, R.13, Canaan Township, Athens County, Ohio and being all of a Tract I (0.12 ac) and all of a Tract II (0.5 ac) and part of a Tract III as recorded in 201-908 O.R. and part of a 5.06 acre tract (256, 1955 O.R.) and being more particularly described as follows:

Beginning at a point in Township Road 92, said point bears North 01 degrees 28 minutes 21 seconds East, 293.46 feet from the North-east corner of the South-west Quarter of Section 26 and being the North-east corner of a 5.16 acre tract (201-906 O.R.)

Thence, with the lines of said tract :

South 01 degrees 28 minutes 21 Seconds East, 181.86 feet to an iron pin found, passing an iron pin found at 32.42 feet;

South 39 degrees 15 minutes 30 seconds West, 153.57 feet;

South 49 degrees 31 minutes 43 seconds West, 82.47 feet;

South 21 degrees 48 minutes 53 seconds west, 219.96 feet;

South 34 degrees 48 minutes 58 seconds West, 221.40 feet to an iron pin found at the South-east corner of the aforementioned 5.16 acre tract;

Thence, along random-lines:

South 63 degrees 38 minutes 11 seconds East, 55.92 feet;

North 54 degrees 32 minutes 20 seconds East, 291.13 feet to an iron pin set;

North 02 degrees 55 minutes 5 seconds West, 73.75 feet;

North 44 degrees 11 minutes 24 seconds East, 296.00 feet to a point in Township Road 92, passing an iron pin at 141.02 feet;

Thence, along said road

North 04 degrees 13 minutes 57 seconds West, 95.67 feet ;

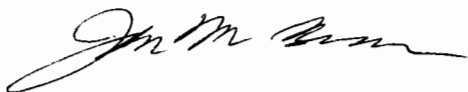
North 17 degrees 32 minutes 02 seconds West, 61.90 feet ;

North 28 degrees 19 minutes 55 seconds West, 72.32 feet;

North 35 degrees 45 minutes 23 seconds West, 113.58 feet to the point of beginning and containing 2.464 acres of which 0.12 acres are out of Tract I , 0.54 acres are out of Tract II 1.594 acres are out of Tract III (201-908 O.R.) and 0.21 acres are out of the 5.06 acre tract (256-1955 O.R.)

Subject to all easements and rights of way of record.

The above described tract is based on a field survey completed May 2003 by John M. Branner P.S. 6805



Description checked for
Mathematical Accuracy
ATHENS COUNTY
ENGINEER'S OFFICE

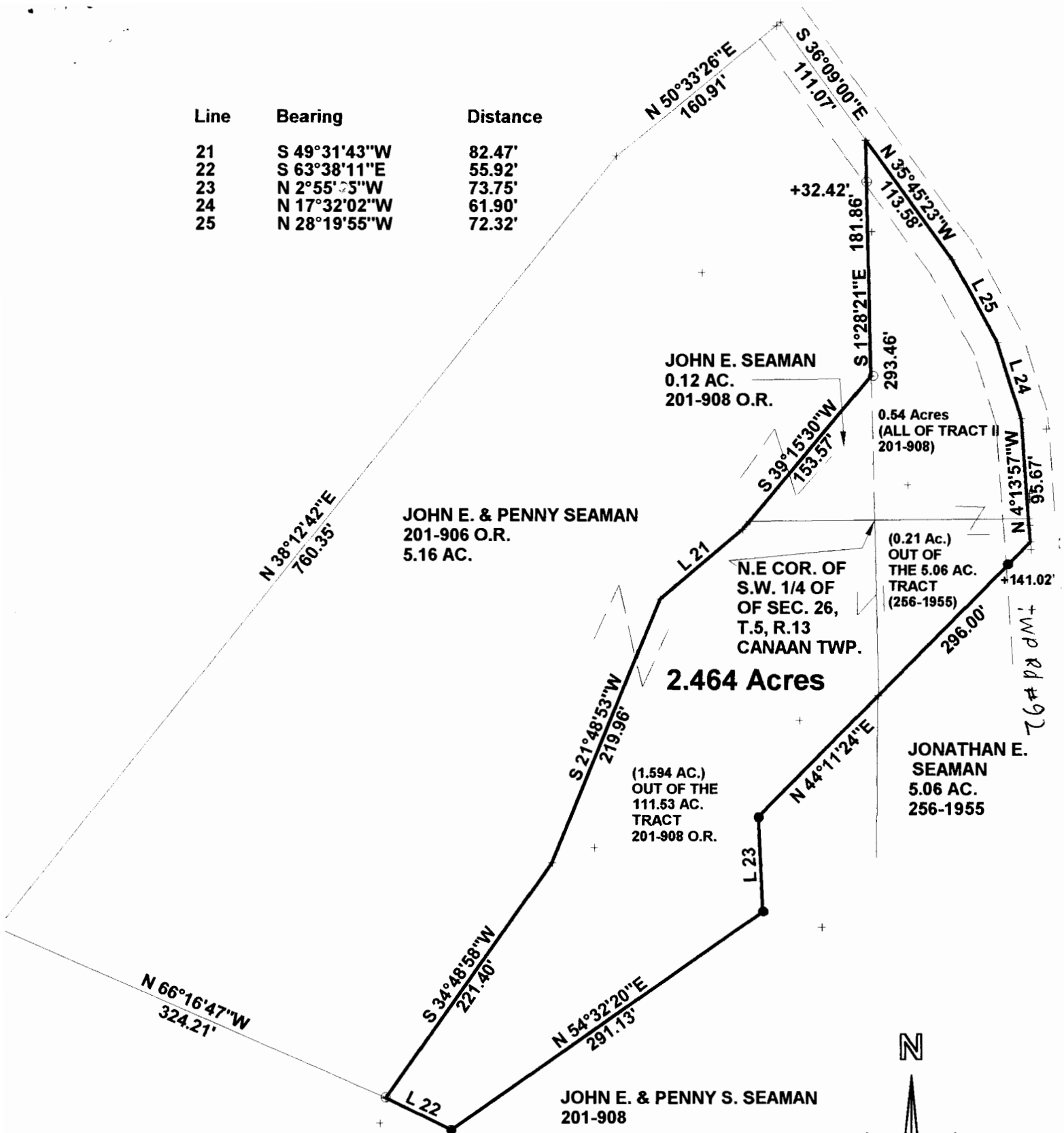
BY:

DATE:

S. Blaise
5-22-03

CM# 26

Line	Bearing	Distance
21	S 49°31'43"W	82.47'
22	S 63°38'11"E	55.92'
23	N 2°55'05"W	73.75'
24	N 17°32'02"W	61.90'
25	N 28°19'55"W	72.32'



SURVEY OF A 2.464 ACRE TRACT
SECTION 26, T.5, R.13, CANAAN TOWNSHIP
ATHENS COUNTY, OHIO
SURVEYED MAY 2003

BY: John M. Branner
JOHN M. BRANNER P.S. 6805
12500 N. PEACH RIDGE ROAD
ATHENS, OHIO 45701
(740) 592-5778

Description checked for
Mathematical Accuracy
ATHENS COUNTY
ENGINEER'S OFFICE
BY: S. Klaus
DATE: 5-22-03



SCALE 1 INCH = 100 FEET

- = IRON PIN SET
- = IRON PIN FD