

DESCRIPTION OF A 1.72 ACRE TRACT

Situated in Section 34, T.5, R.13, Canaan Township, Athens County, Ohio and being more particularly described as follows:

Beginning at a point in the existing center-line of County Road #24, said point being North, 2000 feet and West, 1950 feet from the South-east corner of Section 34 and also being 259.06 feet right from center-line station 830+25 of Limited Access Route 50;

Thence, along the center-line of County Road 24, North 86 degrees 27 minutes 40 seconds West, a distance of 306.10 feet;

thence North 80 degrees 42 minutes 43 seconds West, a distance of 294.78 feet;

thence, leaving said County Road 24, North 5 degrees 11 minutes 28 seconds East, a distance of 116.82 feet to a point in the South limited access line of U.S. Route 50;

thence, along said limited access line, South 83 degrees 44 minutes 36 seconds East, a distance of 600.10 feet;

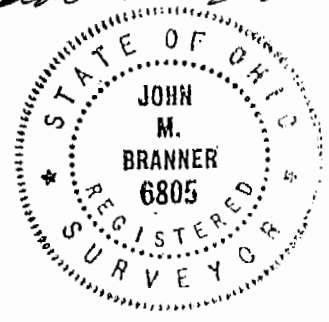
thence, along Grantor's East-line and Limited Access line, South 5 degrees 11 minutes 28 seconds West, a distance of 117.90 feet to the POINT OF BEGINNING; said described tract containing 1.720 acres.

Subject to all easements and rights of way of record.

The above description is based on O.D.O.T. Right of Way Plans Ath -50-14.57 sheet number 25 of 44 sheets of which a portion is attached to this description and is to be considered an integral part of this description.

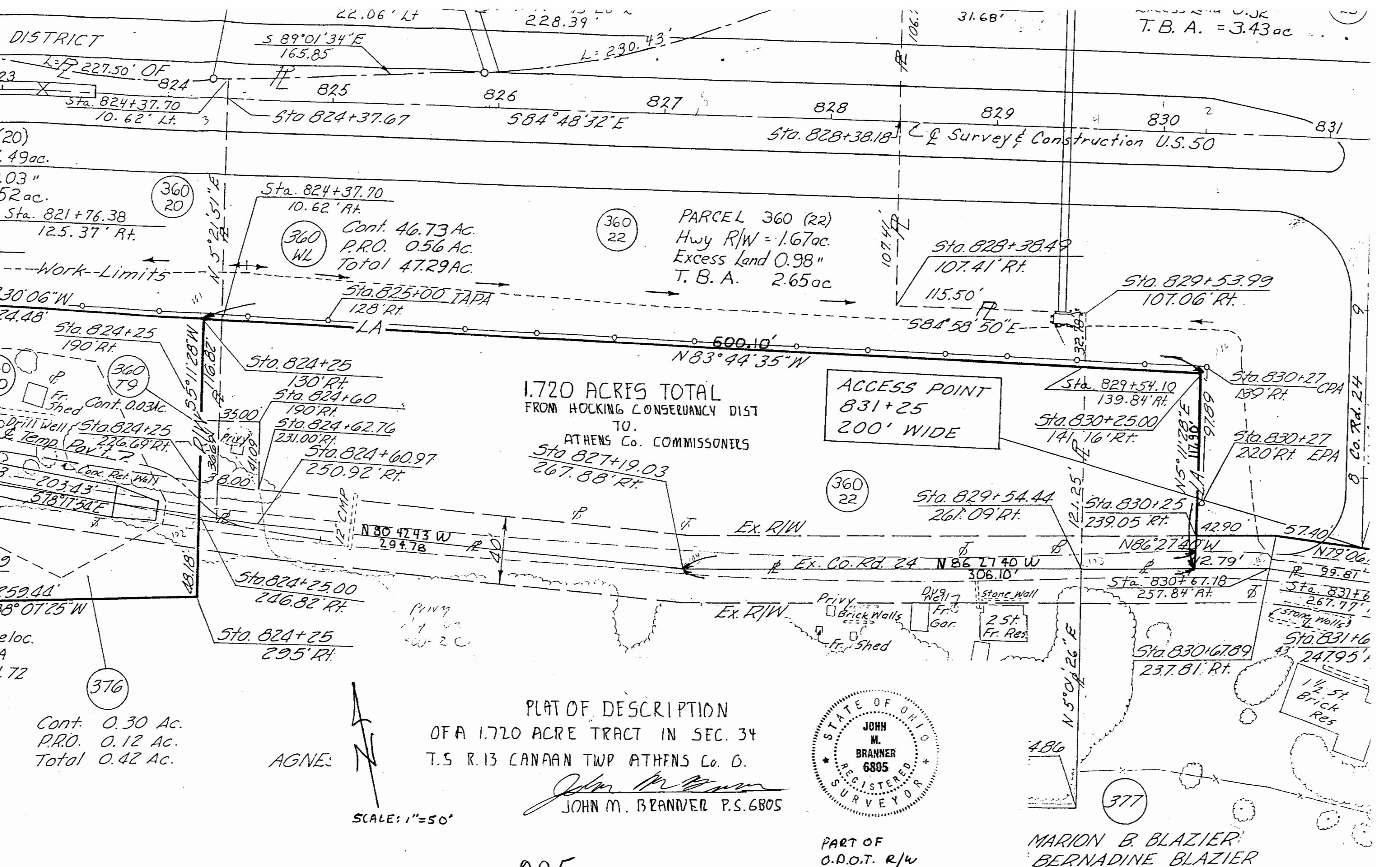
Description prepared by Athens County Engineers Office by John M. Branner P.S. 6805

John M. Branner



Description checked for
Mathematical Accuracy
ATHENS COUNTY
ENGINEERS OFFICE
BY: *S. Blaus*
DATE: *4-17-96*

CAN#34



T.B.A. = 3.43 ac

DISTRICT

(20) 49 ac.

03" 52 ac.

Sta. 821+76.38 125.37' Rt.

Work-Limits

30'06" W

Sta. 824+25 190' Rt.

360 79

Fr. Shed Cont. 0.03 ac.

Drill Well & Temp. Pav't

203'43' 518°11'51"E

259.44'

18°07'25" W

eloc. A

172

376

Cont. 0.30 Ac.

P.R.O. 0.12 Ac.

Total 0.42 Ac.

AGNES

SCALE: 1"=50'

Sta. 824+37.70 10.62' Rt.
 360 20
 Cont. 46.73 Ac.
 P.R.O. 0.56 Ac.
 Total 47.29 Ac.

360 22
 PARCEL 360 (22)
 Hwy R/W = 1.67 ac.
 Excess Land 0.98"
 T.B.A. 2.65 ac

1.720 ACRES TOTAL
 FROM HOCKING CONSERVANCY DIST
 TO
 ATHENS Co. COMMISSIONERS

ACCESS POINT
 831+25
 200' WIDE

360 22



PLAT OF DESCRIPTION
 OF A 1.720 ACRE TRACT IN SEC. 34
 T.5 R.13 CANAAN TWP ATHENS Co. O.
 JOHN M. BRANNER P.S. 6805

PART OF
 O.D.O.T. R/W
 ATH-50-1457
 SHEET 25 OF 44

MARION B. BLAZIER
 BERNADINE BLAZIER

225

226