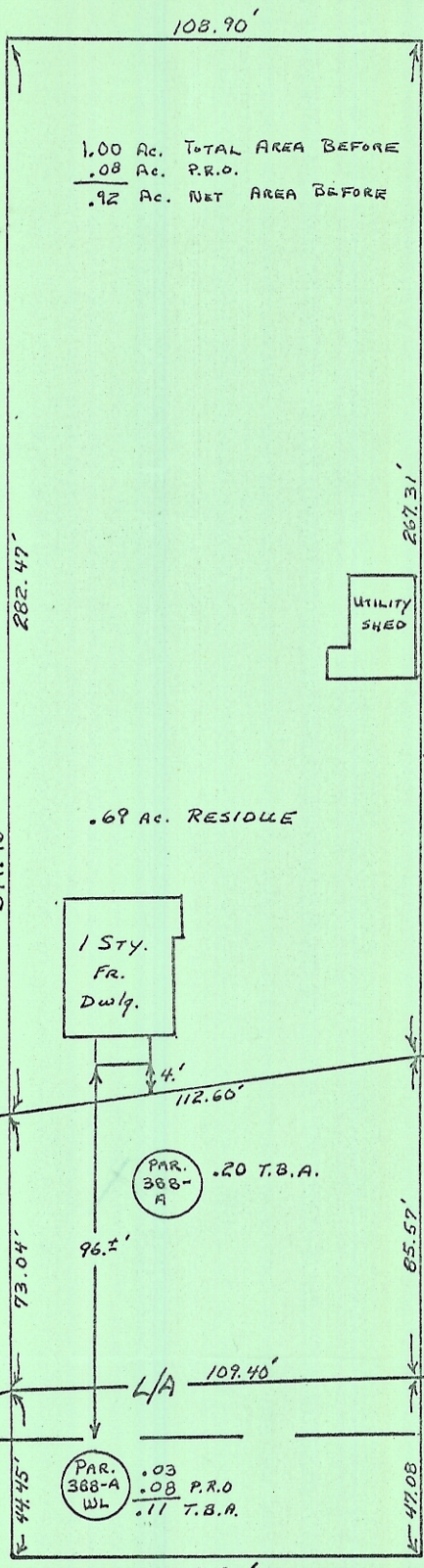


28



1.00 Ac. TOTAL AREA BEFORE
 .08 Ac. P.R.O.
 .92 Ac. NET AREA BEFORE



.69 Ac. RESIDUE

1 STY.
FR.
DWLG.

UTILITY
SHED

PAR. 388-A
.20 T.B.A.

PAR. 388-A
WL
.03 P.R.O.
.11 T.B.A.

PROPOSED R/W
LINE

PROPOSED L/A R/W
LINE

EXISTING R/W

C.R. 52

EXISTING R/W

To U.S. 50 &
 ATHENS CORP. LINE
 ← 1075.2'

