

DESCRIPTION OF A 51.13 ACRE TRACT

Situated in Section #11, T.5, R.12, Carthage Township, Athens County, Ohio and being more particularly described as follows:

Beginning at an iron pin set at the base of a 36 inch oak tree , said pin being the South-east corner of Section #11,

thence, South 89 Degrees 07 Minutes West, 1285.01 feet to a point in Athens County Road #65, passing an iron pin set at 1191.25 feet;

thence, along said road, North 14 Degrees 41 Minutes 18 Seconds East, 305.72 feet;

thence, North 13 Degrees 56 Minutes 25 Seconds West, 345.04 feet;

thence, North 12 Degrees 02 Minutes 01 Seconds West, 490.54 feet;

thence, North 03 Degrees 48 Minutes 23 Seconds East, 306.02 feet to a point at the intersection of County Road #65 and Township Road #153;

thence, along Township Road #153, North 55 Degrees 47 Minutes 40 Seconds East, 152.73 feet;

thence, North 40 Degrees 37 Minutes 19 Seconds East, 229.71 feet;

thence, North 30 Degrees 22 Minutes 55 Seconds East, 94.88 feet;

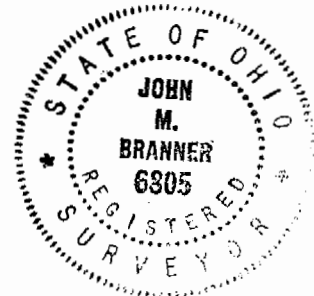
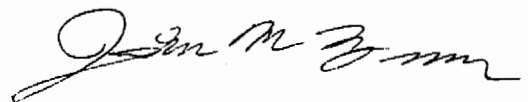
thence, leaving said road, and along the South-line of a 18.50 acre tract, South 88 Degrees 12 Minutes 22 Seconds East, 1049.08 feet to an iron pin set at the South-east corner of said tract;

thence, along the East-line of Section 11, South 00 Degrees 00 Minutes 00 Seconds East, 1705.12 feet to the point of beginning and containing 51.13 acres.

Subject to all easements and rights of way of record.

All iron pins set are 5\8 inch by 30 inch long rebar.

The above description is based on a field survey completed January 1996 under the supervision of John M. Branner P.S. 6805



Drawn by _____ for
Athens County
ATHENS COUNTY
ENGINEER'S OFFICE
BY: J. Blauer
DATE: 1-29-96

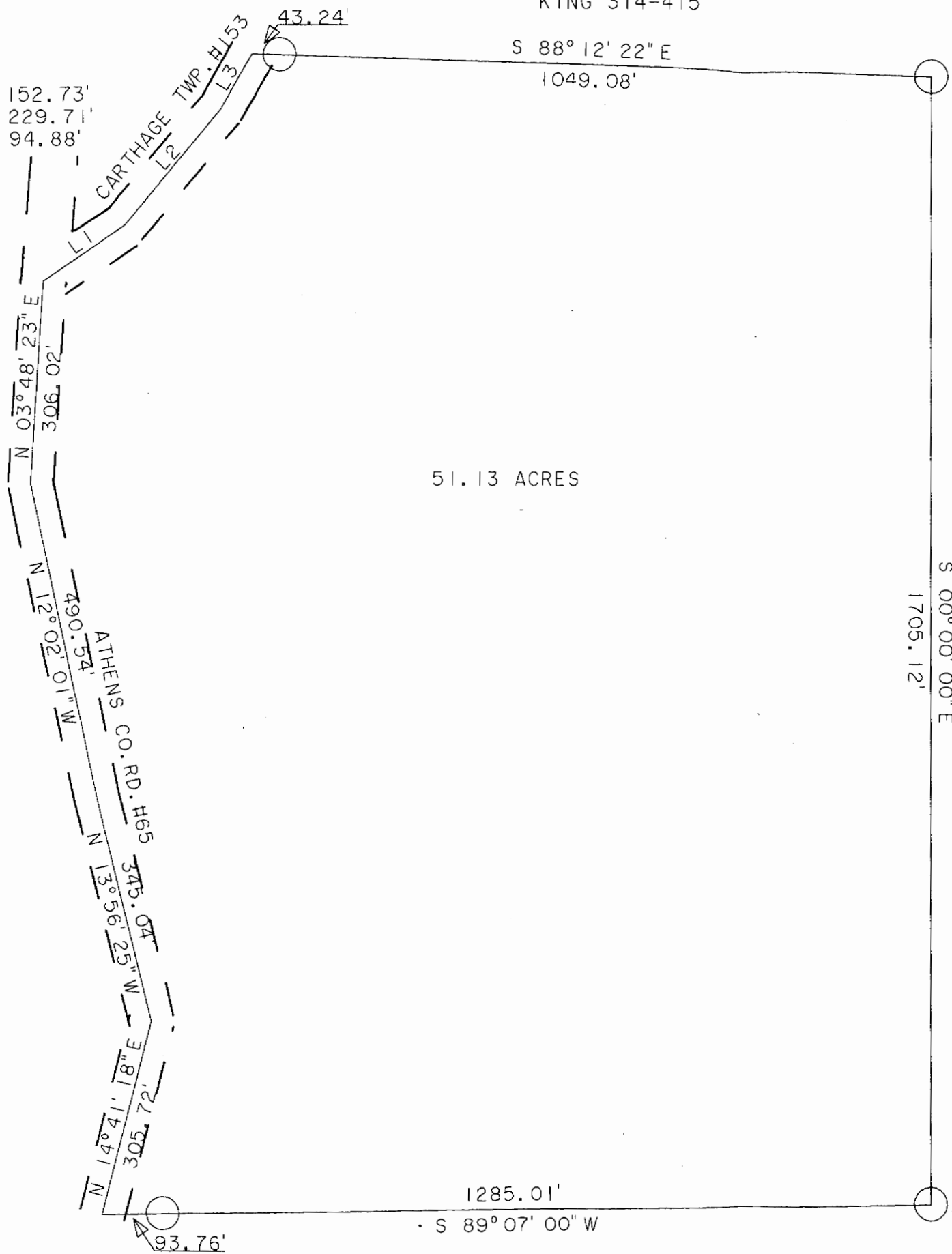
CAR # 11

109

L1 N 55° 47' 40" E 152.73'
 L2 N 40° 37' 19" E 229.71'
 L3 N 30° 22' 55" E 94.88'

KING 314-415

S 88° 12' 22" E
 1049.08'



○ IRON PIN SET (5x8" X 30" REBAR)
 ⊙ IRON PIN FOUND



HARPER 360-691

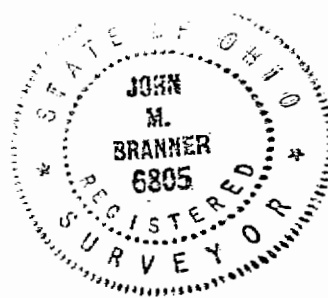
S 00° 00' 00" E
 1705.12'

SURVEY OF A 51.13 ACRE TRACT IN
 SECTION #11 T. 5, R. 12.
 CARTHAGE TOWNSHIP, ATHENS COUNTY, OHIO
 SURVEYED JAN. 1996

John M. Branner

JOHN M. BRANNER P.S. 6805
 12500 N. PEACH RIDGE ROAD
 ATHENS OHIO (614) 592-5778

S. E. COR.
 SECTION #11
 I. P. SET AT
 BASE OF 36" OAK TREE



111A

111