

BRANNER SURVEYING

MEMBER-PROFESSIONAL LAND SURVEYORS OF OHIO

12500 N. PEACH RIDGE ROAD
ATHENS, OHIO 45701

JOHN M. BRANNER
Registered Land Surveyor

TELEPHONE
(740) 592-5778

DESCRIPTION OF A 34.271 ACRE TRACT

Situated in Section 33, T. 5, R. 12, Carthage Township, Athens County, Ohio and being a part of a 76.83 acre tract described in Volume 238 Page 797 Official Records of Athens County and being more particularly described as follows.

Commencing at the South-west corner of Section 33;
thence, North 65 degrees 23 minutes 30 seconds East, a distance of 1397.97 feet to a point in Township Road 112, said point being the North-west corner of a 3.32 acre tract Transferred 5/28/97 and the East line of a 27.84 acre tract Transferred 9/18/97, said point being the POINT OF BEGINNING;
thence, following said Road and the East line of said 27.84 acre tract, North 7 degrees 34 minutes 59 seconds East, a distance of 65.17 feet to a point;
thence, North 14 degrees 12 minutes 03 seconds East, a distance of 98.26 feet to a point;
thence, North 15 degrees 55 minutes 51 seconds East, a distance of 89.73 feet to a point;
thence, North 20 degrees 06 minutes 35 seconds East, a distance of 147.65 feet to a point;
thence, North 19 degrees 33 minutes 18 seconds East, a distance of 90.82 feet to a point;
thence, North 9 degrees 59 minutes 51 seconds East, a distance of 139.38 feet to a point;
thence, North 1 degree 02 minutes 13 seconds East, a distance of 100.65 feet to a point;
thence, North 8 degrees 42 minutes 34 seconds West, a distance of 71.15 feet to a point;
thence, North 25 degrees 31 minutes 40 seconds West, a distance of 58.25 feet to a point;
thence, North 47 degrees 29 minutes 57 seconds West, a distance of 60.72 feet to a point;
thence, North 59 degrees 52 minutes 29 seconds West, a distance of 61.88 feet to a point;

Description checked for
Mathematical Accuracy
ATHENS COUNTY
ENGINEER'S OFFICE

BY: S. Blausen
DATE: 9-23-98

120

CAR #33

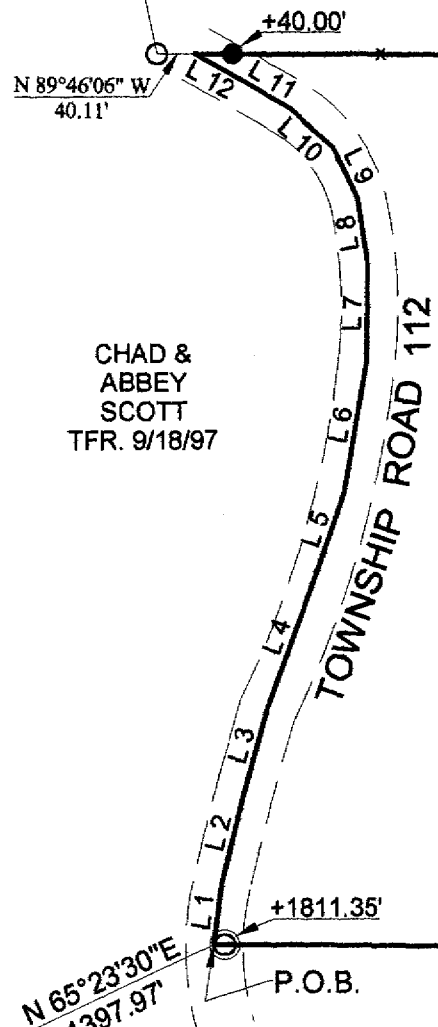
thence, North 60 degrees 29 minutes 40 seconds West, a distance of 53.78 feet to a point, referenced by an iron pin found Bearing, North 89 degrees 46 minutes 06 seconds West, a distance of 40.11 feet, said point being on a South line of a 87.80 acre tract described in Volume 327 Page 545 Athens County Deed of Records; thence, leaving said Road and said 27.84 acre tract and following said South line of said 87.80 acre tract, South 89 degrees 46 minutes 06 seconds East, a distance of 1328.22 feet to an iron pin set, passing an iron pin set at 40.00 feet; thence, leaving said South line and following an East line, South 0 degrees 00 minutes 56 seconds West, a distance of 215.41 feet (198.00 feet Deed) to an iron pin set; thence, leaving said East line and following a South line, North 89 degrees 59 minutes 11 seconds East, a distance of 504.24 feet (505.56 feet Deed) to an iron pin set at the North-west corner of a 8.00 acre tract described in Volume 219 Page 130 Official Records of Athens County; thence, leaving said South line and following the West line of said 8.00 acre tract, South 0 degrees 17 minutes 17 seconds West, a distance of 721.04 feet to a calculated iron pin from a previous survey; thence, leaving said West line, North 89 degrees 37 minutes 19 seconds West, a distance of 1812.35 feet to the POINT OF BEGINNING, passing calculated iron pins from previous surveys at 1186.26 feet and 1811.35 feet; said described tract containing 34.271 acres (1,492,835.0644 square feet).

Subject to all easements and right-of-ways of record.
All iron pins set are 5/8 inch x 30 inch long rebar.

The above description is based on a field survey completed September 1998 By: John M. Branner P.S. 6805, 12500 N. Peach Ridge Road, Athens, Ohio 45701 (740) 592-5778

121

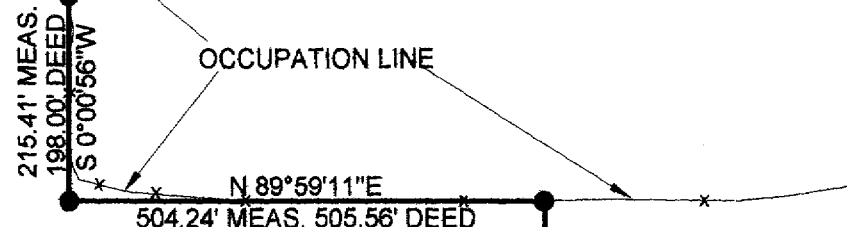
PAUL R. & WANDA M. KRIEGER 327-545



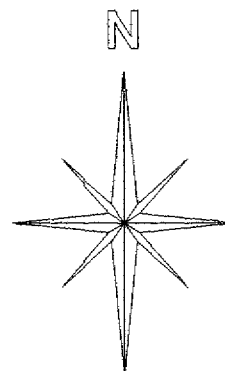
CHAD & ABBEY SCOTT TFR. 9/18/97

34.271 ACRES

Line	Bearing	Distance
1	N 7°34'59"E	65.17'
2	N 14°12'03"E	98.26'
3	N 15°55'51"E	89.73'
4	N 20°06'35"E	147.65'
5	N 19°33'18"E	90.82'
6	N 9°59'51"E	139.38'
7	N 1°02'13"E	100.65'
8	N 8°42'34"W	71.15'
9	N 25°31'40"W	58.25'
10	N 47°29'57"W	60.72'
11	N 59°52'29"W	61.88'
12	N 60°29'40"W	53.78'

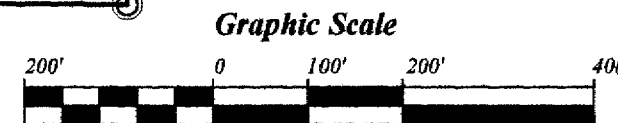


BARBARA B. GRIFFIN 47-49 & 47-799 219-130 O.R.



MIMI HART TFR. 5/28/97

ALAN STIRCHER TFR. 5/28/97



**SURVEY OF A 34.271 ACRE TRACT
SECTION 33, T. 5, R. 12, CARTHAGE TOWNSHIP
ATHENS COUNTY, OHIO
SURVEYED SEPTEMBER 1998**

Description checked for
Mathematical Accuracy
ATHENS COUNTY
ENGINEER'S OFFICE
BY: S. Blause
DATE: 9-23-98

- = IRON PINS SET
- = IRON PINS FOUND
- ⊙ = IRON PINS CALCULATED FROM PREVIOUS SURVEYS

BEARINGS SHOWN HEREON
ARE BASED ON A SURVEY OF AN
87.8 ACRE TRACT AND ARE USED
TO DENOTE ANGLES ONLY

JOHN M. BRANNER P.S. 6805
12500 N. PEACH RIDGE ROAD
ATHENS, OHIO (740) 592-5778

hcl

SOUTH-WEST CORNER
OF SECTION 33