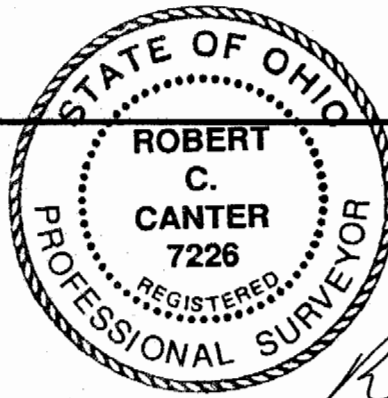




CANTER SURVEYING

GPS SERVICES, INC.

227A Columbus Road  
Athens, Ohio 45701



Phone (740) 592-5706

Fax (740) 592-5817

**Parcel #1**

Situate in Section 36, T5N, R12W, Carthage Township, Athens County, Ohio. Being a part of the Mark Schloss parcel as described in O.R. Vol. 337, Pg. 423, Athens County Recorder's Office.

Commencing at a stone at the northeast corner of the east half of the southwest quarter of said Section 36 (reference: Survey by L.F. Swoyer dated Aug., 1988), thence on an assumed bearing along the east line of said southwest quarter S 00°25'07" W 867.13 feet to an iron pin found, thence leaving the east line of said southwest quarter of Section 36 N 89°34'53" W 567.65 feet to an iron pin found, thence S 89°34'51" W 324.15 feet to an iron pin set, said iron pin being the **Point-of-Beginning** for the parcel herein described;

Thence from this Point-of-Beginning S 00°32'05" W 867.88 feet to an iron pin set;

Thence S 32°57'38" W 257.26 feet to a railroad spike set in the center of Carthage Twp. Road 99;

Thence along the center of said Twp. Rd. 99 N 46°12'52" W 122.23 feet to a point;

Thence leaving said Twp. Rd. 99 N 00°25'07" E 900.82 feet to an iron pin found (reference: iron pin found at 120.40 feet);

Thence N 63°44'19" E 222.71 feet to an iron pin found;

Thence S 89°34'53" E 30.00 feet to the Point-of-Beginning.

Containing 5.02 acres as surveyed March, 2003 under the direction of Robert C. Canter, P.S. 7226.

Subject to all legal easements and rights of way.

Plat of Survey is attached herewith and made a part thereof.

Iron pins set are 5/8"x30" rebar with plastic cap stamped "Canter 7226".

Basis of Bearings: East line of southwest quarter of Section 36 being S 00°25'07" W. Bearings are used to denote angular relationships only.

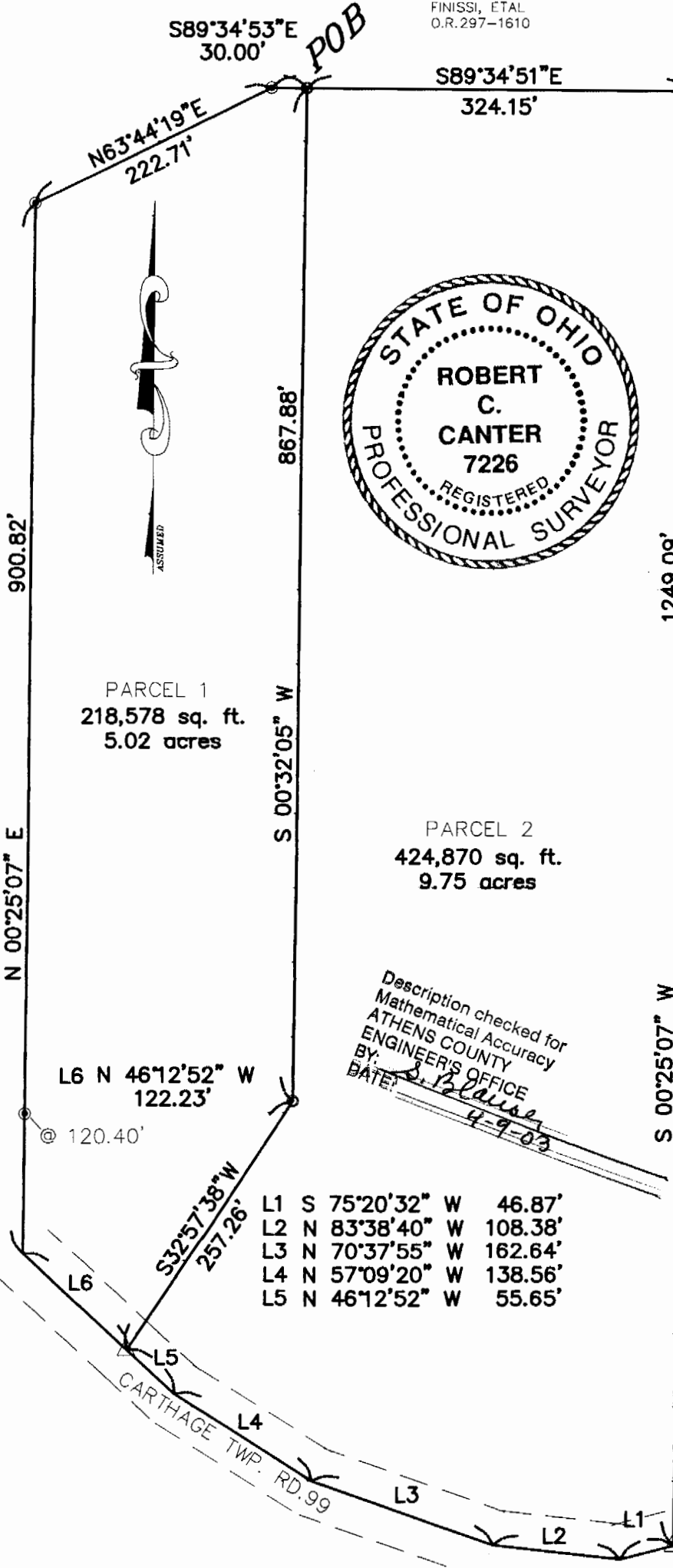
References used: Prior survey by L.F. Swoyer dated Aug., 1988.

Description checked for  
Mathematical Accuracy  
ATHENS COUNTY  
ENGINEER'S OFFICE  
BY: S. Blaisey  
DATE: 4-9-03

PLAT OF SURVEY OF 5.02 AC. PARCEL  
AND REMAINING 9.75 AC. PARCEL

FINISSI, ETAL  
O.R. 297-1610

NE. CORNER OF  
EAST HALF OF  
SW QUARTER  
SECTION 36



SITUATE IN THE TOWNSHIP OF  
CARTHAGE, COUNTY OF  
ATHENS, STATE OF OHIO  
SECTION 36, T5N, R12W  
AS DESCRIBED  
IN D.R. VOL. 337 PG. 423  
ATHENS COUNTY RECORDERS  
OFFICE.

- IRON PIN FOUND  
W/CAP STAMPED  
SWOYER 6765
- 5/8"X30" IRON PIN  
SET W/CAP STAMPED  
"CANTER 7226"
- △ RAIL ROAD SPIKE SET

REFERENCES USED:  
PRIOR SURVEY BY  
L. F. SWOYER P.S. 6765  
DATE AUGUST 1988.

BASIS OF BEARING:  
BEING S 00° 25' 07" W  
ALONG THE EAST LINE OF  
THE SOUTHWEST QUARTER OF  
SECTION 36  
BEARINGS ARE USED TO  
DENOTE ANGULAR RELATIONS  
ONLY.

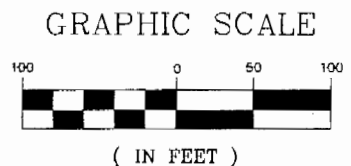
SUBJECT TO ALL LEGAL  
EASEMENTS AND RIGHTS OF  
WAY.

PARCEL 1 CONTAINING 5.02  
ACRES  
PARCEL 2 CONTAINING 9.75  
ACRES AS SURVEYED MARCH  
2003 UNDER THE DIRECTION  
OF ROBERT C. CANTER P.S.  
7226.

Description checked for  
Mathematical Accuracy  
ATHENS COUNTY  
ENGINEER'S OFFICE  
BY: *S. Blaise*  
DATE: *4-9-03*

L1	S	75°20'32"	W	46.87'
L2	N	83°38'40"	W	108.38'
L3	N	70°37'55"	W	162.64'
L4	N	57°09'20"	W	138.56'
L5	N	46°12'52"	W	55.65'

*Robert C. Canter*  
ROBERT C. CANTER P.S. 7226



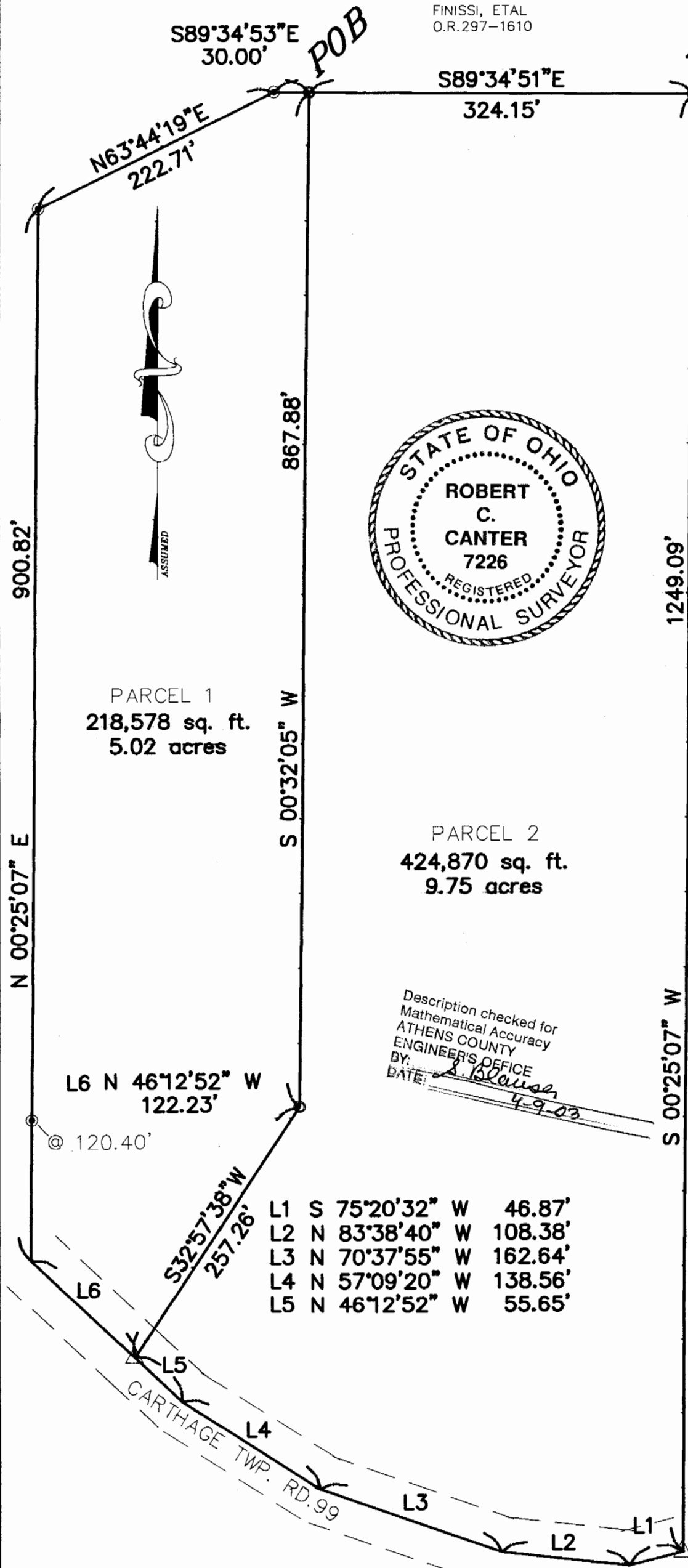
Not to Scale

CAR # 36

PLAT OF SURVEY OF 5.02 AC. PARCEL  
AND REMAINING 9.75 AC. PARCEL

FINISSI, ETAL  
O.R. 297-1610

NE. CORNER OF  
EAST HALF OF  
SW QUARTER  
SECTION 36



PARCEL 1  
218,578 sq. ft.  
5.02 acres

PARCEL 2  
424,870 sq. ft.  
9.75 acres

900.82'  
N 00°25'07" E

N 00°25'07" E

N 00°25'07" W

S 00°32'05" W

1249.09'

S 00°25'07" W

S 00°25'07" W

S 00°25'07" W

S 00°25'07" W

S 00°25'07" W

S 00°25'07" W

S 00°25'07" W

S 00°25'07" W

S 00°25'07" W

S 00°25'07" W

S 00°25'07" W

S 00°25'07" W

S 00°25'07" W

S 00°25'07" W

S 00°25'07" W

S 00°25'07" W

S 00°25'07" W

S 00°25'07" W

S 00°25'07" W

S 00°25'07" W

S 00°25'07" W

S 00°25'07" W

S 00°25'07" W

S 00°25'07" W

S 00°25'07" W

S 00°25'07" W

S 00°25'07" W

S 00°25'07" W

S 00°25'07" W

S 00°25'07" W

S 00°25'07" W

S 00°25'07" W

S 00°25'07" W

S 00°25'07" W

S 00°25'07" W

S 00°25'07" W

S 00°25'07" W

S 00°25'07" W

S 00°25'07" W

S 00°25'07" W

S 00°25'07" W

S 00°25'07" W

S 00°25'07" W

S 00°25'07" W

S 00°25'07" W

S 00°25'07" W

S 00°25'07" W

S 00°25'07" W

S 00°25'07" W

S 00°25'07" W

S 00°25'07" W

S 00°25'07" W

S 00°25'07" W

S 00°25'07" W

S 00°25'07" W

S 00°25'07" W

S 00°25'07" W

S 00°25'07" W

S 00°25'07" W

S 00°25'07" W

S 00°25'07" W

S 00°25'07" W

S 00°25'07" W

S 00°25'07" W

S 00°25'07" W

S 00°25'07" W

S 00°25'07" W

S 00°25'07" W

S 00°25'07" W

S 00°25'07" W

S 00°25'07" W

S 00°25'07" W

S 00°25'07" W

S 00°25'07" W

S 00°25'07" W

S 00°25'07" W

S 00°25'07" W

S 00°25'07" W

S 00°25'07" W

S 00°25'07" W

S 00°25'07" W

S 00°25'07" W

S 00°25'07" W

S 00°25'07" W

S 00°25'07" W

S 00°25'07" W

S 00°25'07" W

S 00°25'07" W

S 00°25'07" W

S 00°25'07" W

S 00°25'07" W

S 00°25'07" W

S 00°25'07" W

S 00°25'07" W

S 00°25'07" W

S 00°25'07" W

S 00°25'07" W

S 00°25'07" W

S 00°25'07" W

S 00°25'07" W

S 00°25'07" W

S 00°25'07" W

S 00°25'07" W

S 00°25'07" W

S 00°25'07" W

S 00°25'07" W

S 00°25'07" W

S 00°25'07" W

S 00°25'07" W

S 00°25'07" W

S 00°25'07" W

S 00°25'07" W

S 00°25'07" W

S 00°25'07" W

S 00°25'07" W

S 00°25'07" W

S 00°25'07" W

S 00°25'07" W

S 00°25'07" W

S 00°25'07" W

S 00°25'07" W

S 00°25'07" W

S 00°25'07" W

S 00°25'07" W

S 00°25'07" W

S 00°25'07" W

S 00°25'07" W

S 00°25'07" W

S 00°25'07" W

S 00°25'07" W

S 00°25'07" W

S 00°25'07" W

S 00°25'07" W

S 00°25'07" W

S 00°25'07" W

S 00°25'07" W

S 00°25'07" W

S 00°25'07" W

S 00°25'07" W

S 00°25'07" W

S 00°25'07" W

S 00°25'07" W

S 00°25'07" W

S 00°25'07" W

S 00°25'07" W

S 00°25'07" W

S 00°25'07" W

S 00°25'07" W

S 00°25'07" W

S 00°25'07" W

S 00°25'07" W

S 00°25'07" W

S 00°25'07" W

S 00°25'07" W

S 00°25'07" W

S 00°25'07" W

S 00°25'07" W

S 00°25'07" W

S 00°25'07" W

S 00°25'07" W

S 00°25'07" W

S 00°25'07" W

S 00°25'07" W

S 00°25'07" W

S 00°25'07" W

S 00°25'07" W

S 00°25'07" W

S 00°25'07" W

S 00°25'07" W

S 00°25'07" W

S 00°25'07" W

S 00°25'07" W

S 00°25'07" W

S 00°25'07" W

S 00°25'07" W

S 00°25'07" W

S 00°25'07" W

S 00°25'07" W

S 00°25'07" W

S 00°25'07" W

S 00°25'07" W

S 00°25'07" W

S 00°25'07" W

S 00°25'07" W

S 00°25'07" W

S 00°25'07" W

S 00°25'07" W

S 00°25'07" W

S 00°25'07" W

S 00°25'07" W

S 00°25'07" W

S 00°25'07" W

S 00°25'07" W

S 00°25'07" W

S 00°25'07" W

S 00°25'07" W

S 00°25'07" W

S 00°25'07" W

S 00°25'07" W

S 00°25'07" W

S 00°25'07" W

S 00°25'07" W

S 00°25'07" W

S 00°25'07" W

S 00°25'07" W

S 00°25'07" W

S 00°25'07" W

S 00°25'07" W

S 00°25'07" W

S 00°25'07" W

S 00°25'07" W

S 00°25'07" W

S 00°25'07" W

S 00°25'07" W

S 00°25'07" W

S 00°25'07" W

S 00°25'07" W

S 00°25'07" W

S 00°25'07" W

S 00°25'07" W

S 00°25'07" W

S 00°25'07" W

S 00°25'07" W

S 00°25'07" W

S 00°25'07" W

S 00°25'07" W

S 00°25'07" W

S 00°25'07" W

S 00°25'07" W

S 00°25'07" W

S 00°25'07" W

S 00°25'07" W