

DESCRIPTION OF A 15.01 ACRE TRACT

Situated in Section 17, T.5, R.12, Carthage Township, Athens County, Ohio and being more particularly described as follows:

Commencing at a stone at the North-east corner of the South-east Quarter, Section 17, thence, South 89 Degrees 29 Minutes 45 Seconds West, 1438.54 feet to an iron pin at the North-west corner of a 5.03 acre tract (Vol. 383, Page 947); thence, South 00 Degrees 56 Minutes 33 Seconds East, 648.37 feet to an iron pin found at the South-west corner of a 6.88 acre tract and being the point of beginning for the tract of land herein described:

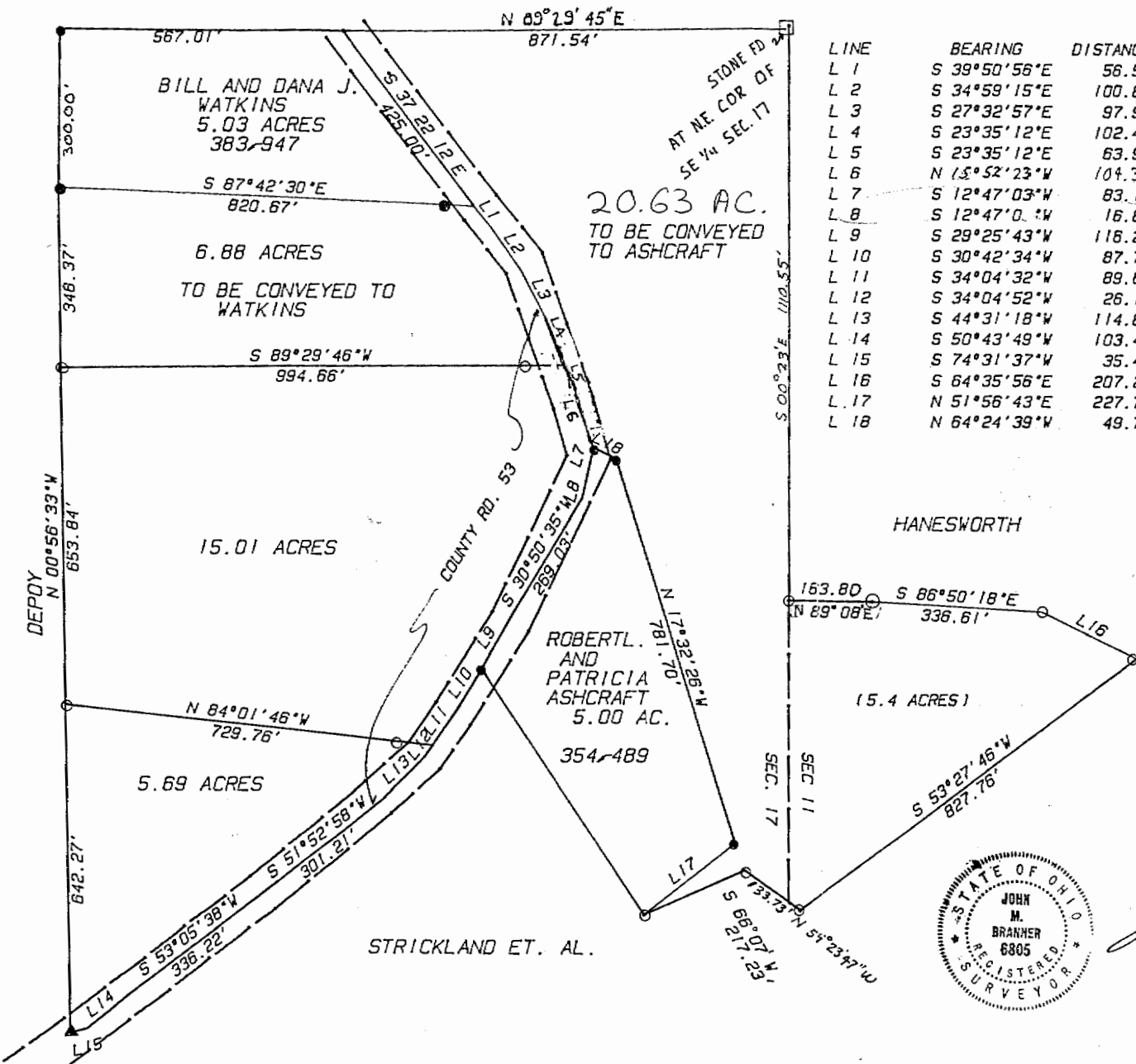
Thence, North 89 Degrees 29 Minutes 46 Seconds East, . 994.66 feet to a point in County road 53, passing an iron pin at 969.66 feet; thence, along said road, South 23 Degrees 35 Minutes 12 Seconds East, 63.92 feet; thence, South 15 Degrees 52 Minutes 23 Seconds East, 104.39 feet; thence, South 12 Degrees 47 Minutes 03 Seconds West, 99.98 feet; thence, South 30 Degrees 50 Minutes 35 Seconds West, 269.03 feet to a point; thence, South 29 Degrees 25 Minutes 43 Seconds West, 116.21 feet to an iron bolt found; thence, South 30 Degrees 42 Minutes 34 Seconds West, 87.77 feet to a point; thence, South 34 Degrees 04 Minutes 32 Seconds West, 89.66 feet to a point; thence, leaving said road, North 84 Degrees 01 Minutes 46 Seconds West, 729.76 feet to an iron pin set; thence, North 00 Degrees 56 Minutes 33 Seconds West, 653.84 feet to the point of beginning and containing 15.01 acres.

Subject to all easements and rights of way of record.

John M. Branner P.S. 6805

Description checked for
Mathematical Accuracy
ATHENS COUNTY
ENGINEER'S OFFICE

BY: Cheryl Hedges
DATE: 2/18/92



LINE	BEARING	DISTANCE
L 1	S 39°50'56"E	56.53'
L 2	S 34°59'15"E	100.84'
L 3	S 27°32'57"E	97.96'
L 4	S 23°35'12"E	102.46'
L 5	S 23°35'12"E	63.92'
L 6	N 15°52'23"W	104.39'
L 7	S 12°47'03"W	83.14'
L 8	S 12°47'03"W	16.84'
L 9	S 29°25'43"W	116.21'
L 10	S 30°42'34"W	87.77'
L 11	S 34°04'32"W	89.66'
L 12	S 34°04'52"W	26.13'
L 13	S 44°31'18"W	114.85'
L 14	S 50°43'49"W	103.41'
L 15	S 74°31'37"W	35.46'
L 16	S 64°35'56"E	207.28'
L 17	N 51°56'43"E	227.74'
L 18	N 64°24'39"W	49.79'

N

SCALE 1 INCH = 200 FEET

● - IRON PIN FOUND
○ - IRON PIN SET

SURVEY OF FOUR TRACTS
IN SECTION 11 AND
SECTION 17 T.5, R.12
CARTHAGE TOWNSHIP, ATHENS
COUNTY, OHIO
SURVEYED FEB. 1992



John M. Branner
JOHN M. BRANNER P.S. 6805
12500 N. PEACH RIDGE ROAD
ATHENS, OHIO 592-5778