

DESCRIPTION OF A 20.63 ACRE TRACT

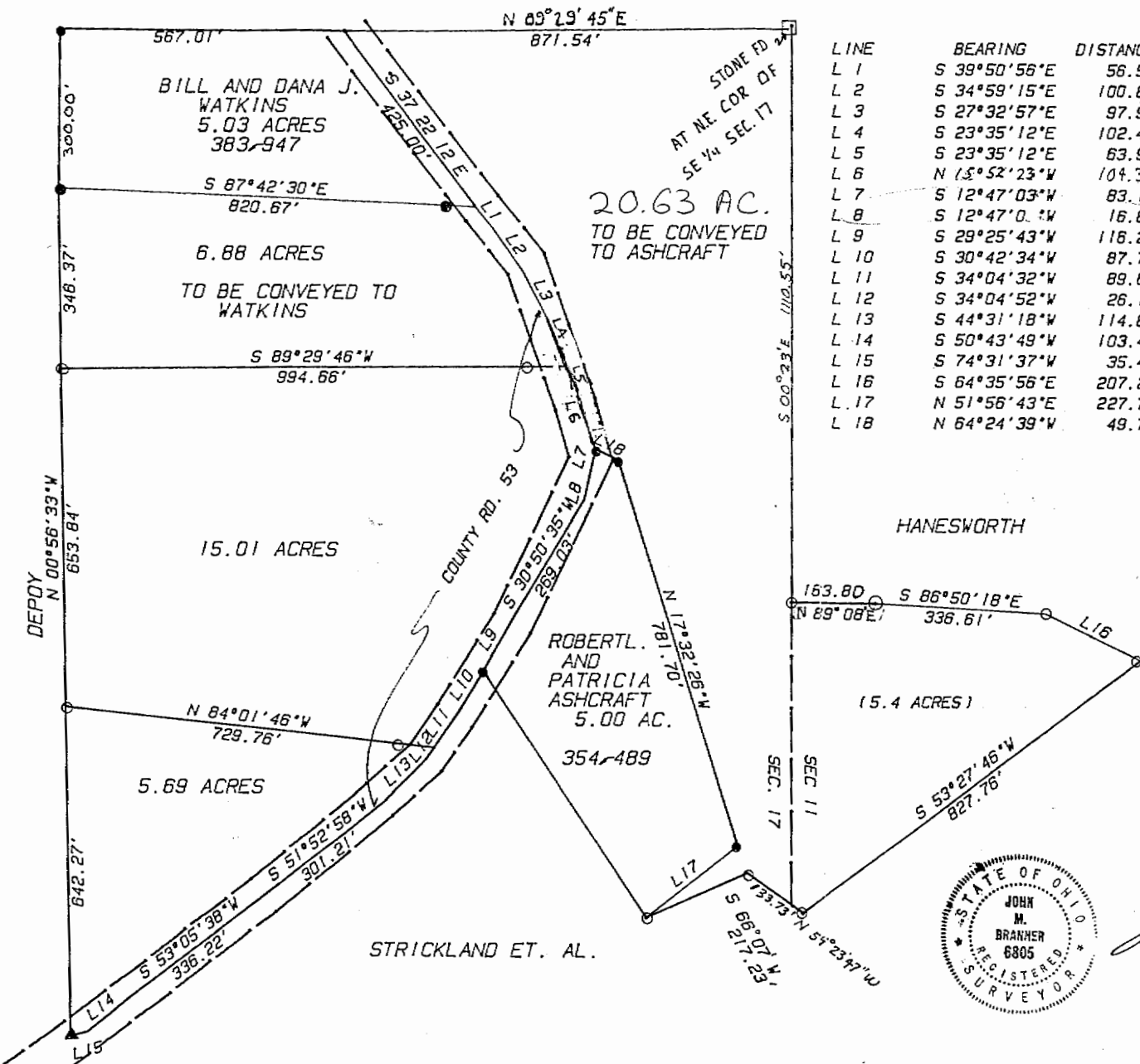
Situated in Section 17, T. 5, R. 12, Carthage Township, Athens County, Ohio and being more particularly described as follows:

Thence, South 00 Degrees 23 Minutes East, 1110.55 feet to an iron pin set; thence, North 89 Degrees 08 Minutes East, 163.80 feet to an iron pin set; thence, South 86 Degrees 50 Minutes 18 Seconds East, 336.61 feet to an iron pin set; thence South 64 Degrees 35 Minutes 56 Seconds East 207.28 feet to an iron pin set; thence, South 53 Degrees 27 Minutes 46 Seconds West, 827.76 feet to an iron pin set; thence, North 54 Degrees 23 Minutes 47 Seconds West, 133.73 feet to an iron pin set; thence, South 66 Degrees 07 Minutes West, 217.23 feet to an iron pin set at the southerly most corner of a 5.00 acre tract (Vol. 354 Page 489); thence, with the lines of said tract, North 51 Degrees 56 Minutes 43 Seconds East, 227.74 feet to an iron pin found; thence, North 17 Degrees 32 Minutes 26 Seconds West, 781.70 feet to an iron pin found; thence, North 64 Degrees 24 Minutes 39 Seconds West, 49.79 feet to an iron pin found in County Road 53; thence, with said road, North 15 Degrees 52 Minutes 23 Seconds West, 104.39 feet to a point; thence, North 23 Degrees 35 Minutes 12 Seconds West, 166.38 feet to a point; thence, North 27 Degrees 32 Minutes 57 Seconds West, 97.96 feet to a point; thence, North 34 Degrees 59 Minutes 15 Seconds West, 100.84 feet to a point; thence, North 39 Degrees 50 Minutes 56 Seconds West, 56.53 feet to a point; thence, North 37 Degrees 22 Minutes 12 Seconds West, 425.00 feet to a point; thence, North 89 Degrees 29 Minutes 45 Seconds East, 671.54 feet (passing an iron pin at 25 feet) to the point of beginning and containing 20.63 acres. of which 5.4 acres are in Section 11 and 15.23 acres are in Section 17.

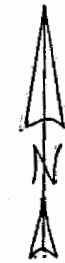
Subject to all easements and rights of way of record.

John M. Branner P.S. 5805

Description checked for
Mathematical Accuracy
ATHENS COUNTY
ENGINEER'S OFFICE
BY: Cheryl Hodges
DATE: 2/18/97



| LINE | BEARING | DISTANCE |
|------|--------------|----------|
| L 1 | S 39°50'56"E | 56.53' |
| L 2 | S 34°59'15"E | 100.84' |
| L 3 | S 27°32'57"E | 97.96' |
| L 4 | S 23°35'12"E | 102.46' |
| L 5 | S 23°35'12"E | 63.92' |
| L 6 | N 15°52'23"W | 104.39' |
| L 7 | S 12°47'03"W | 83.14' |
| L 8 | S 12°47'03"W | 16.84' |
| L 9 | S 29°25'43"W | 116.21' |
| L 10 | S 30°42'34"W | 87.77' |
| L 11 | S 34°04'32"W | 89.66' |
| L 12 | S 34°04'52"W | 26.13' |
| L 13 | S 44°31'18"W | 114.85' |
| L 14 | S 50°43'49"W | 103.41' |
| L 15 | S 74°31'37"W | 35.46' |
| L 16 | S 64°35'56"E | 207.28' |
| L 17 | N 51°56'43"E | 227.74' |
| L 18 | N 64°24'39"W | 49.79' |



SCALE 1 INCH = 200 FEET
 ● - IRON PIN FOUND
 ○ - IRON PIN SET

SURVEY OF FOUR TRACTS
 IN SECTION 11 AND
 SECTION 17 T.5, R.12
 CARTHAGE TOWNSHIP, ATHENS
 COUNTY, OHIO
 SURVEYED FEB. 1992



John M. Branner
 JOHN M. BRANNER P.S. 6805
 12500 N. PEACH RIDGE ROAD
 ATHENS, OHIO 592-5778