

DESCRIPTION OF A 5.69 ACRE TRACT

Situated in Section 17, T.5, R.12, Carthage Township, Athens County, Ohio and being more particularly described as follows:

Commencing at a stone at the North-east corner of the South-east Quarter, Section 17, thence, South 89 Degrees 29 Minutes 45 Seconds West, 1438.54 feet to an iron pin at the North-west corner of a 5.03 acre tract (Vol. 383, Page 947); thence, South 00 Degrees 56 Minutes 33 Seconds East, 1302.21 feet to an iron pin found at the South-west corner of a 15.01 acre tract and being the point of beginning for the tract of land herein described:

Thence, South 84 Degrees 01 Minutes 46 Seconds East, 729.76 feet to a point in County road 53, passing an iron pin set at 704.76 feet ; thence, along said road, South 34 Degrees 04 Minutes 52 Seconds West, 26.13 feet to a point; thence, South 44 Degrees 31 Minutes 18 Seconds West, 114.85 feet to a point; thence, South 51 Degrees 52 Minutes 58 Seconds West, 301.21 feet to a point; thence, South 53 Degrees 05 Minutes 38 Seconds West, 336.22 feet to a point; thence, South 50 Degrees 43 Minutes 49 Seconds West, 103.41 feet to a point; thence, South 74 Degrees 31 Minutes 37 Seconds West, 35.46 feet to a rail road spike found; thence, North 00 Degrees 56 Minutes 33 Seconds West, 642.27 feet to the point of beginning and containing 5.69 acres.

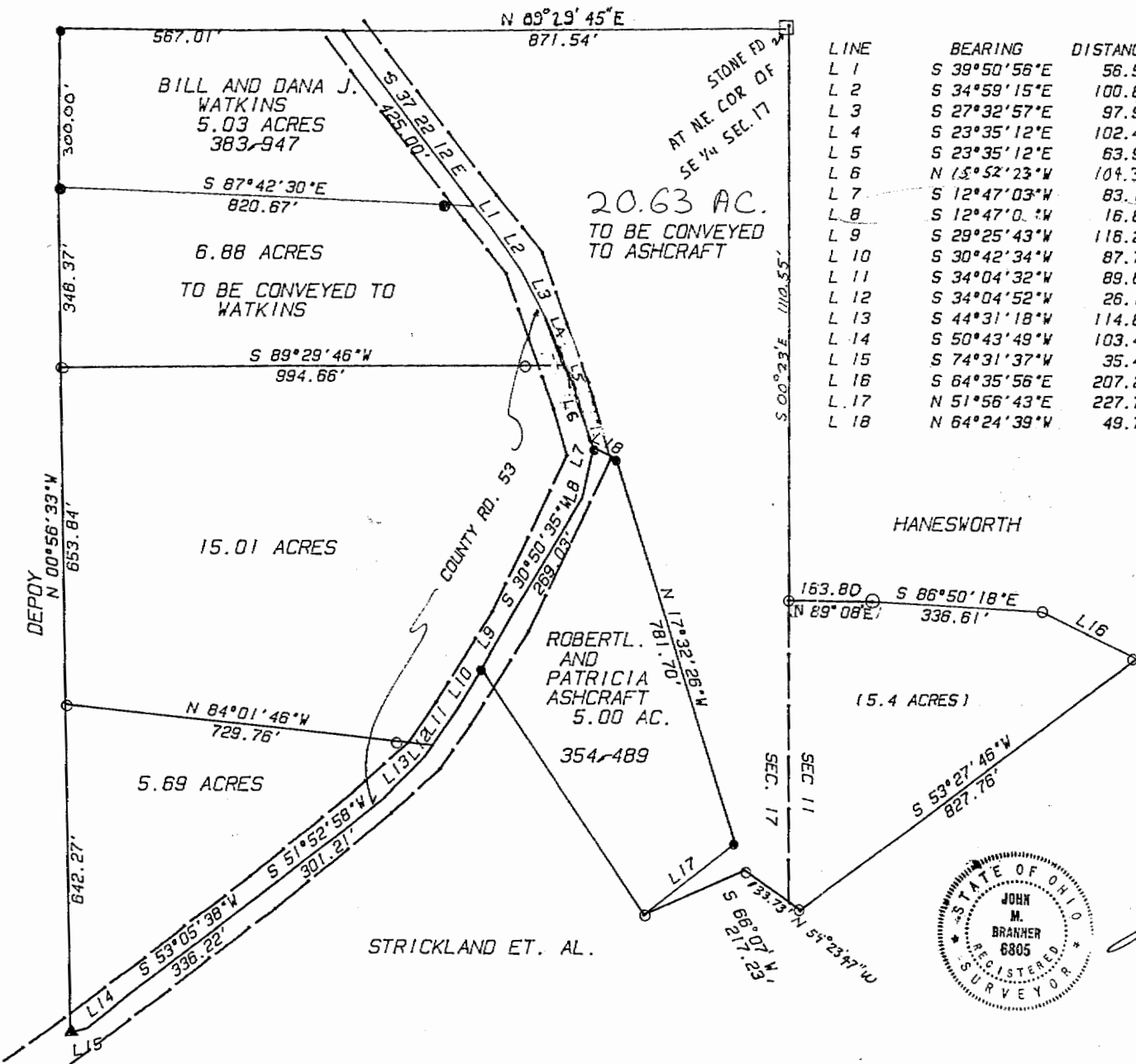
Subject to all easements and rights of way of record.

John M. Branner P. S 6805

Description checked for
Mathematical Accuracy
ATHENS COUNTY
ENGINEER'S OFFICE

BY: Cheryl Hedges
DATE: 2/18/20

7



LINE	BEARING	DISTANCE
L 1	S 39°50'56"E	56.53'
L 2	S 34°59'15"E	100.84'
L 3	S 27°32'57"E	97.96'
L 4	S 23°35'12"E	102.46'
L 5	S 23°35'12"E	63.92'
L 6	N 15°52'23"W	104.39'
L 7	S 12°47'03"W	83.14'
L 8	S 12°47'03"W	16.84'
L 9	S 29°25'43"W	116.21'
L 10	S 30°42'34"W	87.77'
L 11	S 34°04'32"W	89.66'
L 12	S 34°04'52"W	26.13'
L 13	S 44°31'18"W	114.85'
L 14	S 50°43'49"W	103.41'
L 15	S 74°31'37"W	35.46'
L 16	S 64°35'56"E	207.28'
L 17	N 51°56'43"E	227.74'
L 18	N 64°24'39"W	49.79'



SCALE 1 INCH = 200 FEET
 ● - IRON PIN FOUND
 ○ - IRON PIN SET

SURVEY OF FOUR TRACTS
 IN SECTION 11 AND
 SECTION 17 T.5, R.12
 CARTHAGE TOWNSHIP, ATHENS
 COUNTY, OHIO
 SURVEYED FEB. 1992



John M. Branner
 JOHN M. BRANNER P.S. 6805
 12500 N. PEACH RIDGE ROAD
 ATHENS, OHIO 592-5778