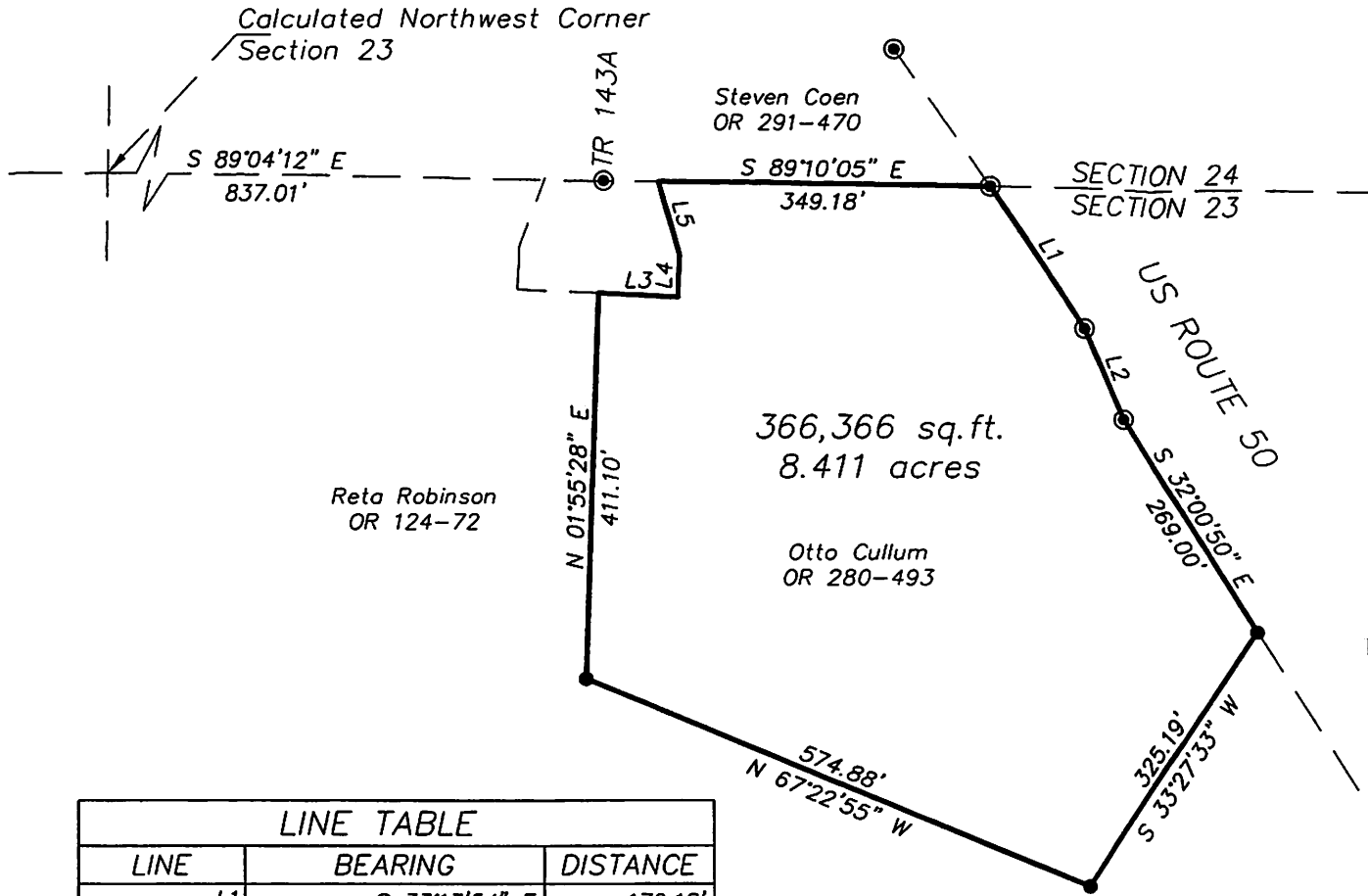


Exception



Plat of Revised Survey, 8.411 Acres  
 Situated in Section 23, Town 5,  
 Range 12, Carthage Township,  
 Athens County, Ohio  
 Revised 5-25-09 for:  
 Otto Cullum

Reta Robinson  
 OR 124-72

Steven Coen  
 OR 291-470

366,366 sq.ft.  
 8.411 acres

Otto Cullum  
 OR 280-493

Reta Robinson  
 OR 124-72

Description Checked for Gregory K. Wright  
 Mathematical Accuracy  
 Athens County  
 ENGINEER'S OFFICE

BY: Gregory K. Wright  
 DATE: 5-26-09

- ⊙ = Iron Pin Found Capped  
 "ODOT R/W ZANDE"
- = Iron Pin Set Capped  
 "Wright S-6535"

LINE TABLE		
LINE	BEARING	DISTANCE
L1	S 33°13'54" E	179.18'
L2	S 23°39'47" E	104.78'
L3	S 87°17'29" E	85.00'
L4	N 02°42'31" E	45.00'
L5	N 16°27'33" W	80.72'

GRAPHIC SCALE



( IN FEET )  
 1 inch = 200 ft.



Gregory K. Wright

Professional Engineer  
 Professional Surveyor

11684 Channingway Blvd  
 The Plains, Ohio 45780  
 740-797-4142  
 FAX 740-797-8623