

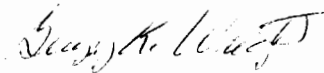
Cecil Smith

Description of 11.232 Acres

Situated in Section 26, Town 5, Range 12, Carthage Township, Athens County, Ohio and being more particularly described as follows;

Commencing at the Northwest Corner of Said Section 11; thence along the north line of the section N 90°00'00" E 1034.26 feet to a point in the center of Township Road 113 (passing an iron pin set at 25.00 feet and at 1000.78 feet); thence along the center of said road S 26°21'03" W 128.17 feet; thence S 32°43'54" W 62.53 feet; thence S 45°21'24" W 74.21 feet; thence S 58°07'49" W 332.38 feet; thence S 47°38'32" W 430.49 feet; thence S 62°40'44" W 146.74 feet; thence S 85°04'58" W 82.64 feet; thence N 80°03'32" W 73.45 feet to a point on the west line of the section; thence leaving the road and along the section line N 00°24'31" W 746.91 feet (passing iron pins set at 30.50 feet and at 721.91 feet) to the point of beginning containing 11.232 acres.

Prior deed reference; Volume 379, Page 825 Deed Records of Athens County.



Gregory K. Wright S-6535

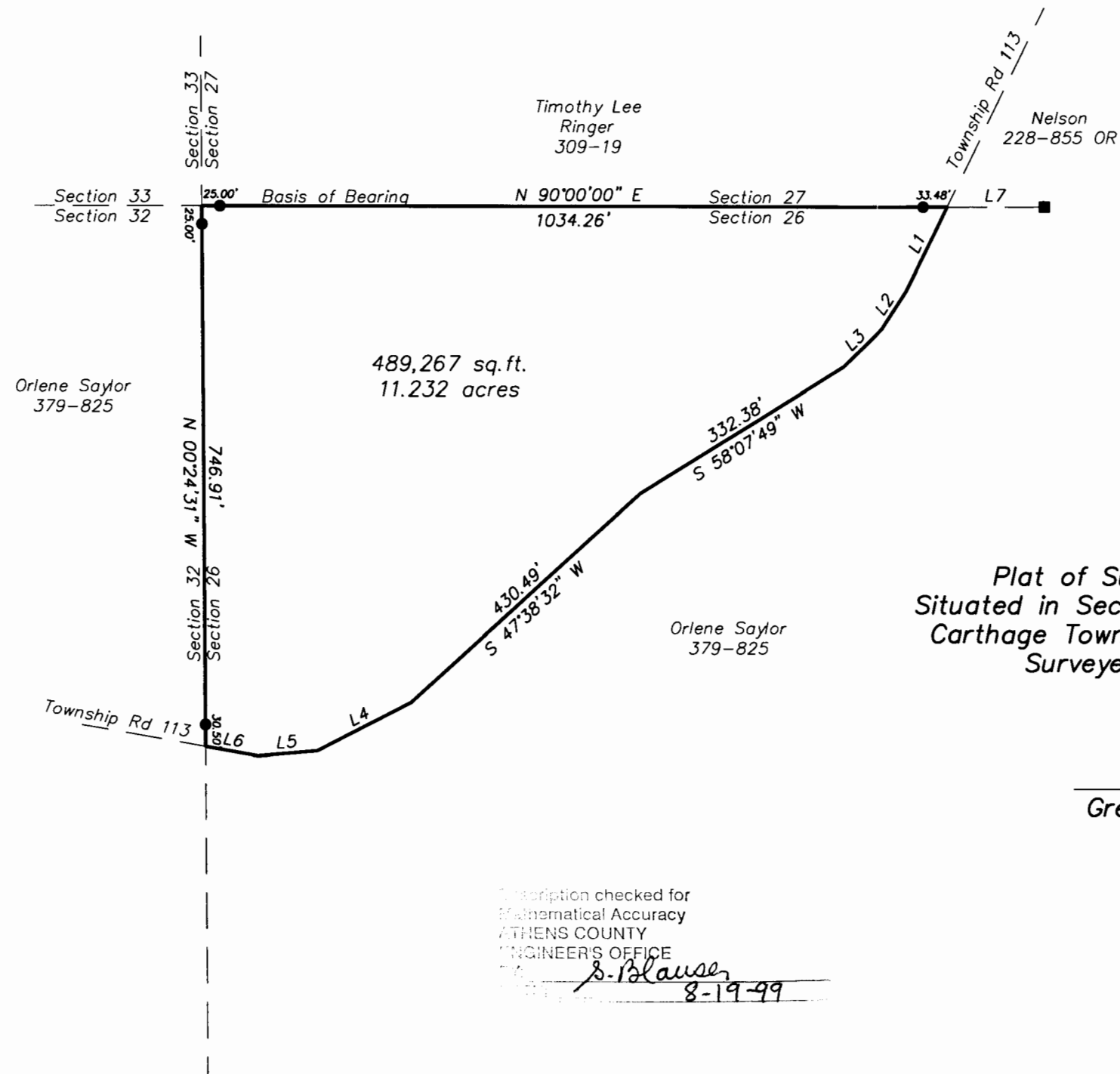
11684 Channingway Blvd.

The Plains, OH 45780

Description checked for
Mathematical Accuracy
ATHENS COUNTY
ENGINEER'S OFFICE
BY: S. Blausen
DATE: 8-19-99

CAR # 26

24



LINE TABLE		
LINE	LENGTH	BEARING
L1	128.17	S26°21'03"W
L2	62.53	S32°43'54"W
L3	74.21	S45°21'24"W
L4	146.74	S62°40'44"W
L5	82.64	S85°04'58"W
L6	73.45	N80°03'32"W
L7	134.59	N90°00'00"W



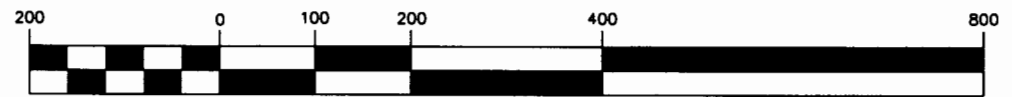
Plat of Survey of 11.232 Acres
 Situated in Section 26, Town 5, Range 12,
 Carthage Township, Athens County, Ohio
 Surveyed August 1999 for:
 Cecil Smith

Gregory K. Wright
 Gregory K. Wright

- ▲ = Railroad Spike Found
- ▲ = Railroad Spike Set
- ⊙ = Iron Pin Found
- = Iron Pin Set
- = Stone Found
- ⊗ = Monument Found

Description checked for
 Mathematical Accuracy
 ATHENS COUNTY
 ENGINEER'S OFFICE
S. Blause
 8-19-99

GRAPHIC SCALE



(IN FEET)
 1 inch = 200 ft.



Gregory K. Wright
 Professional Engineer
 Professional Surveyor

11684 Channingway Blvd
 The Plains, Ohio 45780
 740-797-4142
 FAX 740-797-8623

27