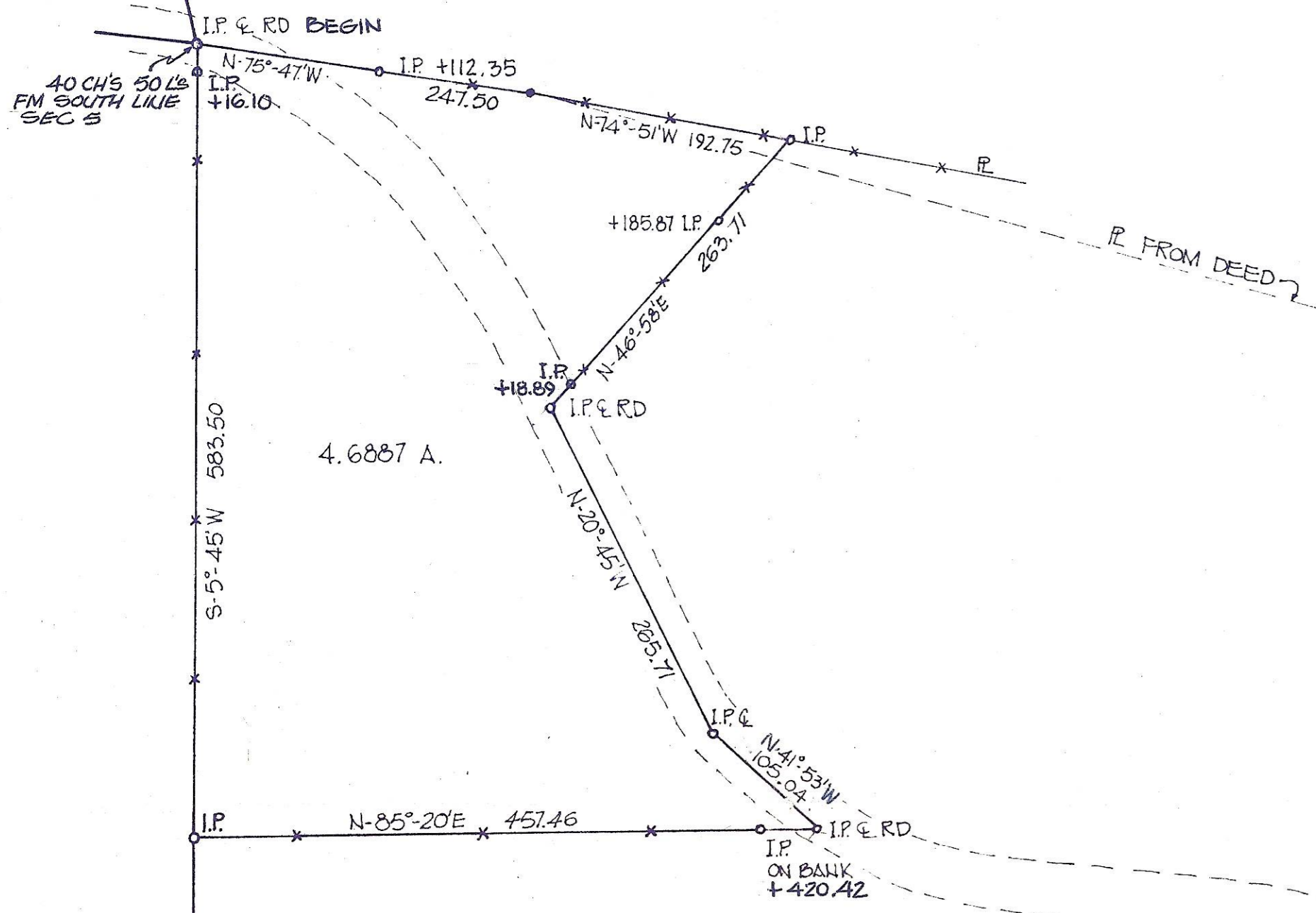


ELVIE & LEONA NELSON  
222-211



SURVEY OF 4.6887 ACRES SITUATED IN  
SEC 5 TOWN 5 RANGE 12 CARTHAGE TWP  
ATHENS CO. OHIO FOR RONALD L. & PATTY L. MARKS  
SOLD TO ALBERT NEWBANKS

SURVEYED BY F.A. DIXON      REG. ENGR 9786  
MAY 27, 1972                    REG. SURV. 3060

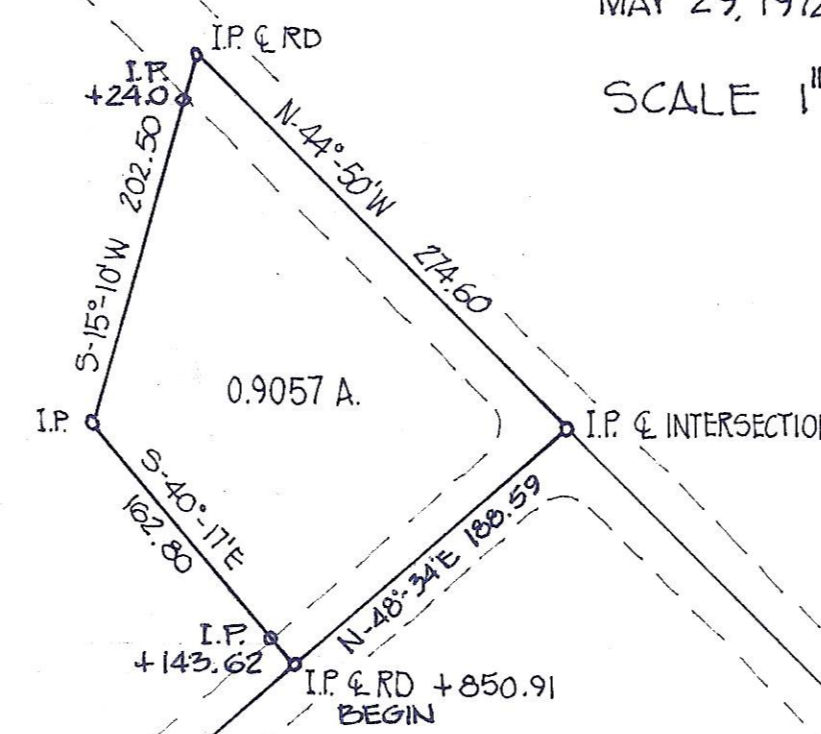
SCALE 1" = 100'

RONALD L. & PATTY L. MARKS  
296-1

SURVEY OF 0.9057 ACRE SITUATED IN  
SEC 5 TOWN 5 RANGE 12 CARTHAGE TWP  
ATHENS CO. OHIO FOR RONALD L. & PATTY L. MARKS  
SOLD TO LARRY DAUGHERTY

SURVEYED BY F.A. DIXON      REG. ENGR 9786  
MAY 29, 1972                    REG. SURV. 3060

SCALE 1" = 100'



GEORGE & FLUTIE HORNER  
211-486

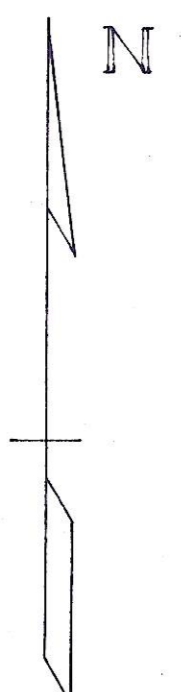
OSCAR & GRACE CAUSEY  
235-144

MOTTIE NELSON  
191-156

WILLIAM WEAVER  
238-910 & 233-220

JERALD & GERTRUDE STEPHENSON  
221-476, 477

CORNELIA COLE  
195-415 & 287-180



HAROLD O. SR. & ADELINE A. FERBY  
278-261

12 CH'S TO  
S.W. CORNER  
SEC 5

18 CH'S

SOUTH LINE SEC 5

55 CH'S FROM  
S.W. CORNER  
SEC 5