

TRACT THREE

BRANNER SURVEYING

MEMBER-PROFESSIONAL LAND SURVEYORS OF OHIO

12500 N. PEACH RIDGE ROAD
ATHENS, OHIO 45701

JOHN M. BRANNER
Registered Land Surveyor

TELEPHONE
(740) 592-5776

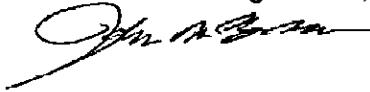
DESCRIPTION OF A 6.500 ACRE TRACT

Situated in Section 34, T. 5, R. 12, Carthage Township, Athens County, Ohio and being a part of a 24.70 acre tract described in Volume 318 Page 471 and Volume 348 Page 53 Athens County Deed of Records and being more particularly described as follows.

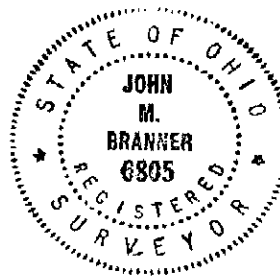
Commencing at a found stone at the North-west corner of Section 34;
thence, South 53 degrees 37 minutes 03 seconds East, a distance of 1780.21 feet to a point in County Road 57, said point being the POINT OF BEGINNING;
thence, following said Road, North 84 degrees 20 minutes 21 seconds East, a distance of 38.40 feet to a point;
thence, South 85 degrees 10 minutes 13 seconds East, a distance of 102.93 feet to a point;
thence, South 75 degrees 03 minutes 07 seconds East, a distance of 115.35 feet to a point;
thence, South 64 degrees 07 minutes 29 seconds East, a distance of 117.13 feet to a point;
thence, South 47 degrees 54 minutes 37 seconds East, a distance of 85.11 feet to a point;
thence, South 24 degrees 29 minutes 34 seconds East, a distance of 135.51 feet to a point, referenced by an iron pin found Bearing North 2 degrees 0 minutes 12 seconds East, a distance of 65.06 feet;
thence, South 2 degrees 00 minutes 12 seconds East, a distance of 330.00 feet to a point;
thence, North 84 degrees 59 minutes 01 second West, a distance of 616.45 feet to an iron pin set, passing an iron pin found at 20.00 feet;
thence, North 13 degrees 02 minutes 47 seconds East, a distance of 556.37 feet to the POINT OF BEGINNING; said described tract containing 6.500 acres (283,148.1197 square feet).

Subject to all easements and right-of-ways of record.
All iron pins set are 5/8 inch x 30 inch long rebar.

The above description is based on a field survey completed September 1998 By: John M. Branner P.S. 6805, 12500 N. Peach Ridge Road, Athens, Ohio 45701 (740) 592-5778

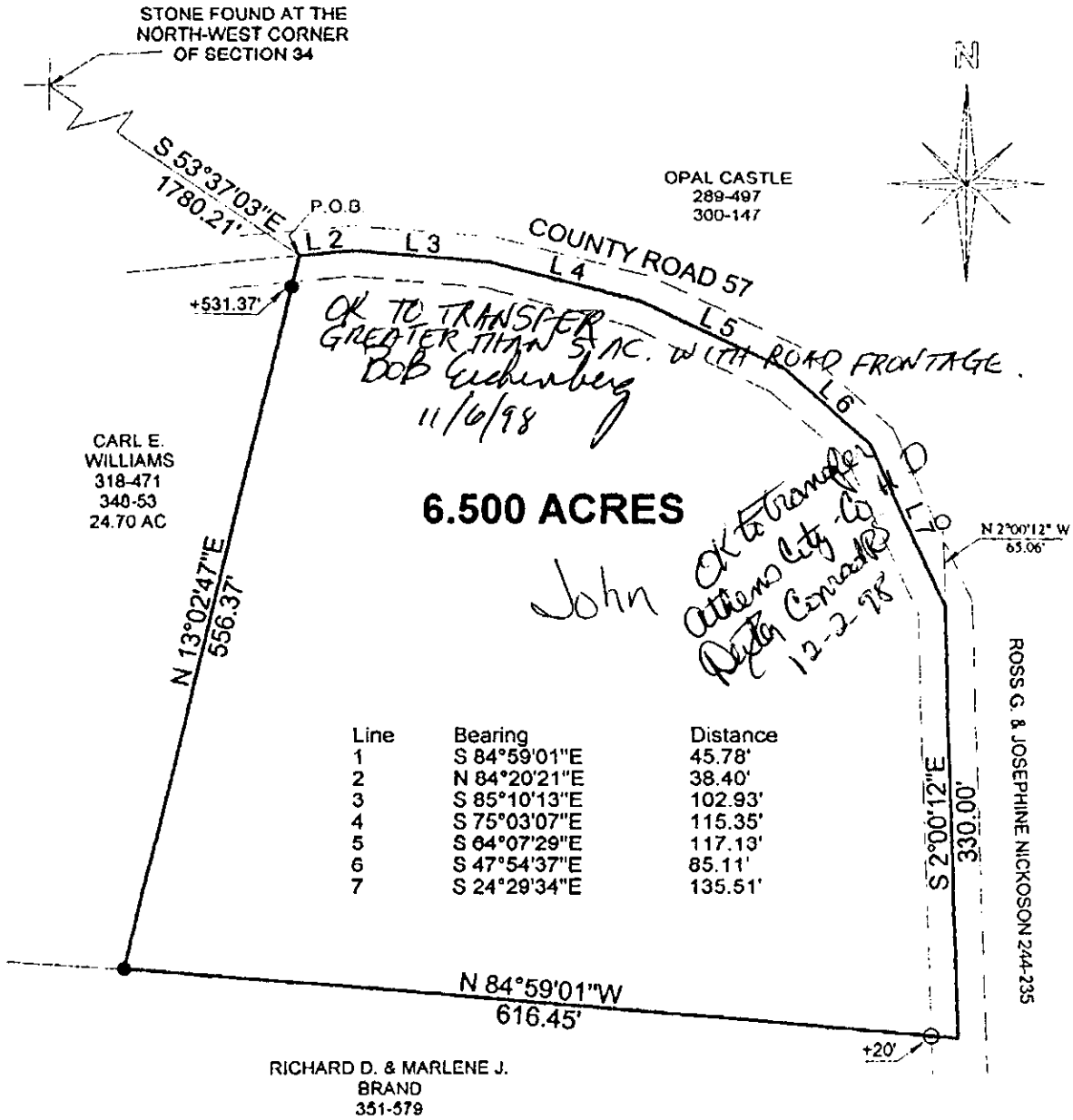


Description checked for
Mathematical Accuracy
ATHENS COUNTY
ENGINEER'S OFFICE
BY: S. Blausey
DATE: 9-15-98

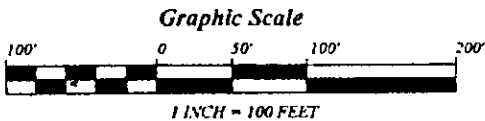


O.R. 0279 PAGE 0276

TRACT THREE



Description checked for
Mathematical Accuracy
ATHENS COUNTY
ENGINEER'S OFFICE
BY: J. Branner
DATE: 7-15-98



SURVEY OF A 6.50 ACRE TRACT
SECTION 34, T. 5, R. 12, CARTHAGE TOWNSHIP
ATHENS COUNTY, OHIO
SURVEYED SEPTEMBER 1998

- = IRON PINS FOUND
- = IRON PINS SET

BEARINGS ARE BASED ON PREVIOUS
SURVEYS AND ARE USED TO DENOTE
ANGLES ONLY

SURVEYED FOR: CARL WILLIAMS

John M. Branner
JOHN M. BRANNER P.S. 6805
12500 N. PEACH RIDGE ROAD
ATHENS, OHIO (740) 592-5778

