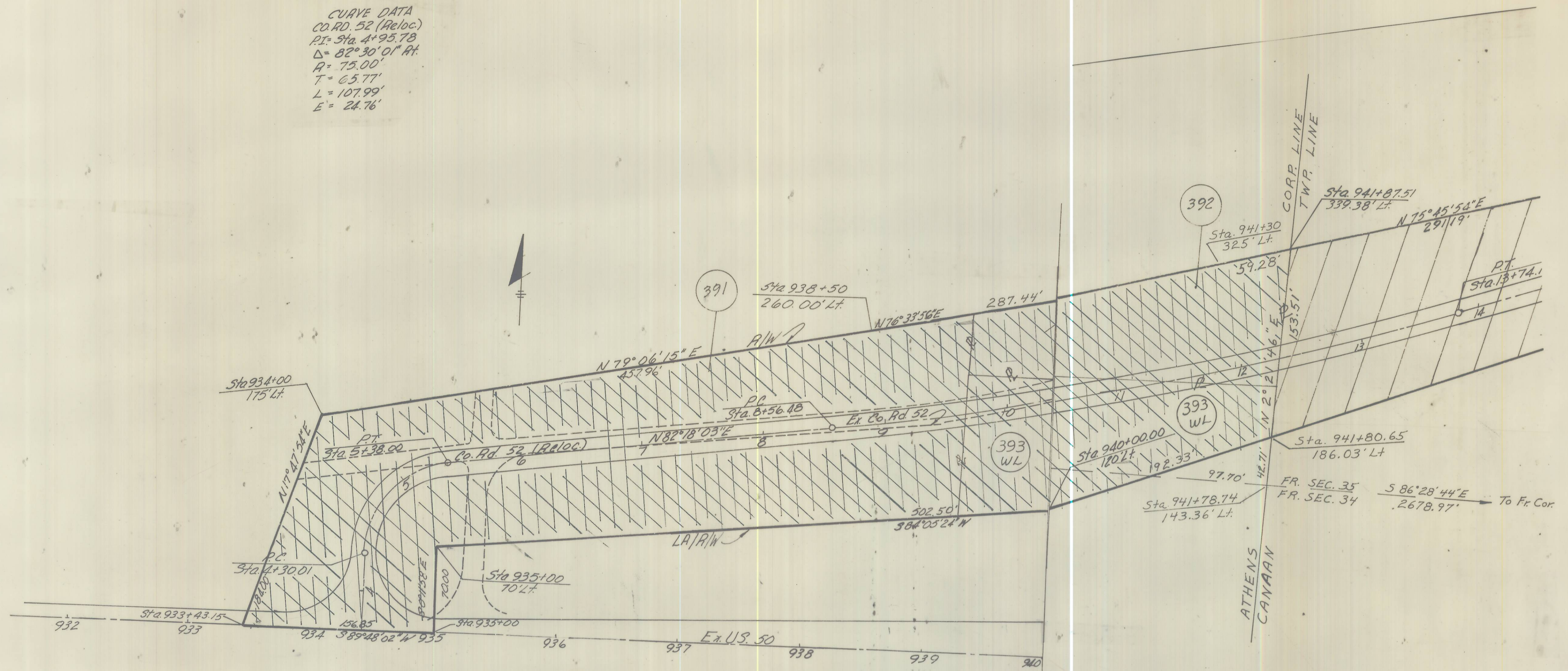


CURVE DATA
 CO. RD. 52 (Reloc.)
 P.I. Sta. 4+95.78
 $\Delta = 82^{\circ}30'01''$ A
 $R = 75.00'$
 $T = 65.77'$
 $L = 107.99'$
 $E = 24.76'$



I hereby certify that the Section of County Road shown hereon has been constructed in accordance with the plans and specifications.

Allen A. Smith
 District Deputy Director
 Date Sept. 9, 1976

128068
 Filed & Recorded August 5, 1977 - 1:40 p.m.
 Plat Book 10 pg. 27
 Wilma Allen
 Athens County Recorder
 #1540

I find that the section of road as shown by the cross-hatched area has been constructed in a satisfactory manner and is in good repair.

The cross-hatched area of this plan approved and accepted by me this 5th day of MAY, 1977 for maintenance and public use.

Cliff C. Anderson
 Service Safety Director
 City of Athens

LOCATION PLAN
 ATH-50-14.10
 County Road No 52