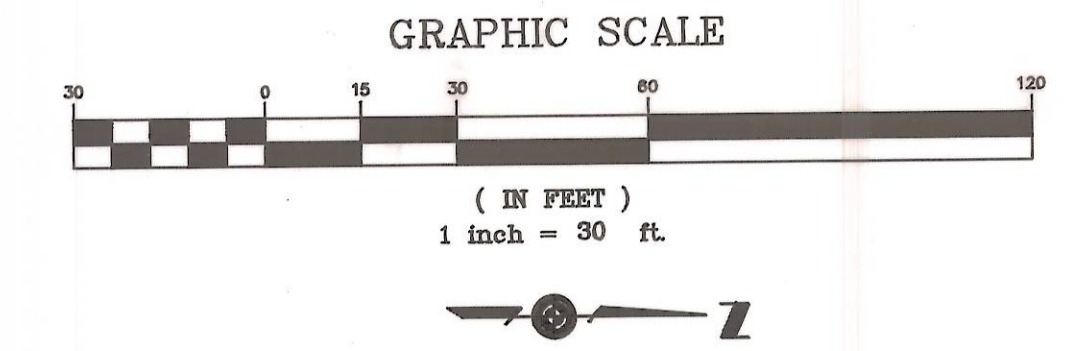


ENVELOPE: 71A
 COLLEGE PARK -
 ATHENS
 CONTINUED FROM ENVELOPE 70B



LEGAL DESCRIPTION
 PHASE 1

Located in Outlots 87 and 88, in the City of Athens, Athens Township, T9N - R14W, Ohio River Survey, Athens County, State of Ohio and more particularly described as follows:

Beginning for reference at the northeast corner of Outlot No. 87, thence north 89° 28' 59" west with the south right-of-way line of West Union Street, the north line of Outlot 87, a distance of 198.47 feet to a point, the true place of beginning of the tract herein described:

Thence south 00° 03' 16" east a distance of 128.40 feet to a point; thence with a curve to the right having a radius of 61.00 feet, a length of 83.79 feet and a chord that bears south 39° 17' 45" west, 77.36 feet;

Thence south 78° 38' 45" west a distance of 38.03 feet to a point;

Thence with a curve to the left having a radius of 19.00 feet, a length of 26.08 feet and a chord that bears south 39° 19' 23" west, 24.08 feet;

Thence south 00° 00' 00" west a distance of 32.43 feet to a point;

Thence with a curve to the right having a radius of 49.00 feet, a length of 53.51 feet and a chord that bears south 31° 16' 59" west, 50.89 feet;

Thence south 62° 33' 58" west a distance of 7.16 feet to a point in the west line of Outlot 87;

Thence with the west line of Outlot 87, south 00° 00' 46" east a distance of 35.79 feet to the southwest corner of Outlot 87 and the northwest corner of Lot 483;

Thence with the west line of Lot 483, south 00° 00' 46" east a distance of 103.35 feet;

Thence south 89° 59' 48" west a distance of 89.97 feet to a point in the east line of the 4.09 acre Gawande Tract as Recorded in Volume 369 at Page 429, Athens County Record of Deeds;

Thence with said Gawande line north 00° 01' 26" east a distance of 283.40 feet to a point;

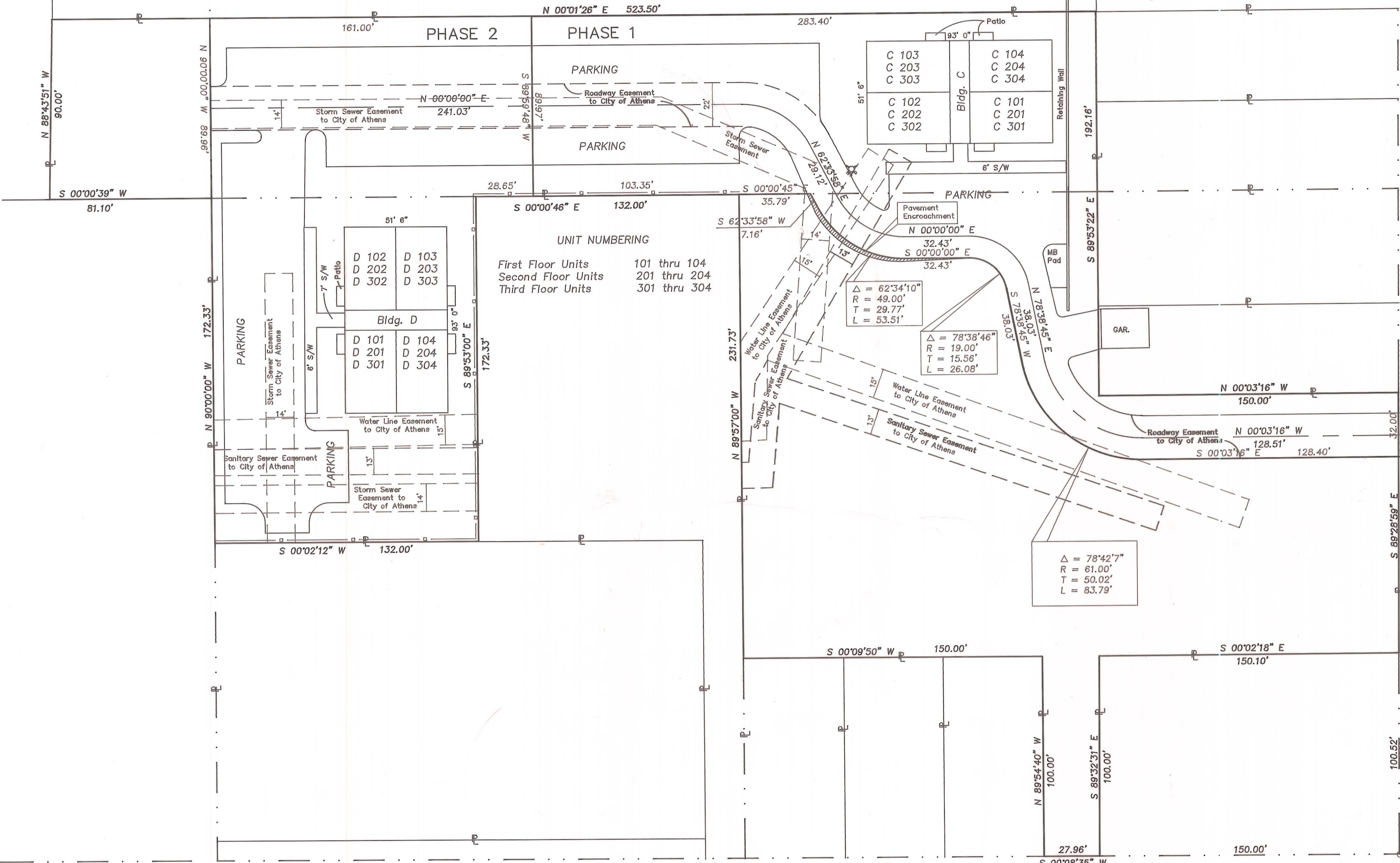
Thence south 89° 53' 22" east a distance of 192.16 feet to a point;

Thence north 00° 03' 16" west a distance of 150.00 feet to a point in the south right-of-way line of West Union Street, the north line of Outlot 87;

Thence with said north line south 89° 28' 59" east a distance of 32.00 feet to the place of beginning and containing 0.874 acres more or less.

of Chain 7
Surveyed October 2, 1991
John H. Condon, Auditor
Part 2 of Chain 7
Surveyed October 16, 1991
John H. Condon, Auditor

Instrument # 005284
 Envelope # 71A
 September 20, 1991 1:22 P.M.
 Julia Michael Scott
 South Shafer Street
 Athens Co. Recorder
 \$43.20



LEGAL DESCRIPTION
 PHASE 2

Located in Outlot 88 and Lot 483, in the City of Athens, Athens Township, T9N - R14W, Ohio River Survey, Athens County, State of Ohio and more particularly described as follows:

Beginning for reference at the northeast corner of Outlot No. 87, thence north 89° 28' 59" west with the south right-of-way line of West Union Street, the north line of Outlot 87, a distance of 198.47 feet to a point; thence south 00° 03' 16" east a distance of 128.40 feet to a point; thence with a curve to the right having a radius of 61.00 feet, a length of 83.79 feet and a chord that bears south 39° 17' 45" west, 77.36 feet; thence south 78° 38' 45" west a distance of 38.03 feet to a point; thence with a curve to the left having a radius of 19.00 feet, a length of 26.08 feet and a chord that bears south 39° 19' 23" west, 24.08 feet; thence south 00° 00' 00" west a distance of 32.43 feet to a point; thence with a curve to the right having a radius of 49.00 feet, a length of 53.51 feet and a chord that bears south 31° 16' 59" west, 50.89 feet;

thence south 62° 33' 58" west a distance of 7.16 feet to a point in the west line of Outlot 87; thence with the west line of Outlot 87, south 00° 00' 46" east a distance of 35.79 feet to the southwest corner of Outlot 87 and the northwest corner of Lot 483; thence with the west line of Lot 483, south 00° 00' 46" east a distance of 103.35 feet to a point, the true place of beginning of the tract herein described:

Thence continuing with the west line of Lot 483, south 00° 00' 46" east a distance of 28.65 feet to a point;

Thence south 89° 53' 00" east a distance of 172.33 feet to a point;

Thence south 00° 02' 12" west a distance of 132.00 feet to a point in the south line of Lot 483;

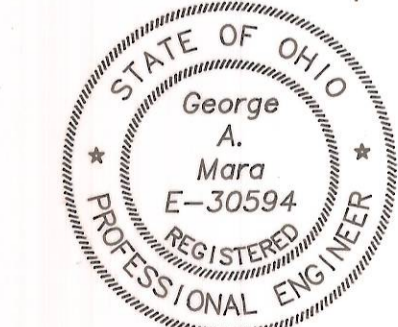
Thence with said south line, north 90° 00' 00" west a distance of 172.33 feet to the southwest corner of Lot 483, the southeast

corner of Outlot 88;

Thence with the south line of Outlot 88, north 90° 00' 00" west a distance of 89.96 feet to a point in the east line of the 4.09 acre Gawande Tract as Recorded in Volume 369 at Page 429, Athens County Records of Deeds;

Thence with said line, north 00° 01' 26" east a distance of 161.00 feet to a point;

Thence north 89° 59' 48" east a distance of 89.97 feet to the place of beginning and containing 0.856 acres more or less.



George A. Mara
 George A. Mara, P.E., P.S.

GEORGE A. MARA ENGINEERING, Inc. CONSULTING ENGINEERS ATHENS, OHIO	
COLLEGE PARK AS BUILT SURVEY	
CONTRACT	JOB NO. AS-345
DRAWN BY:	SCALE: 1"=30'
CHECKED BY:	DATE: Sept. 1991
APPROVED BY:	SHEET 1 OF 1