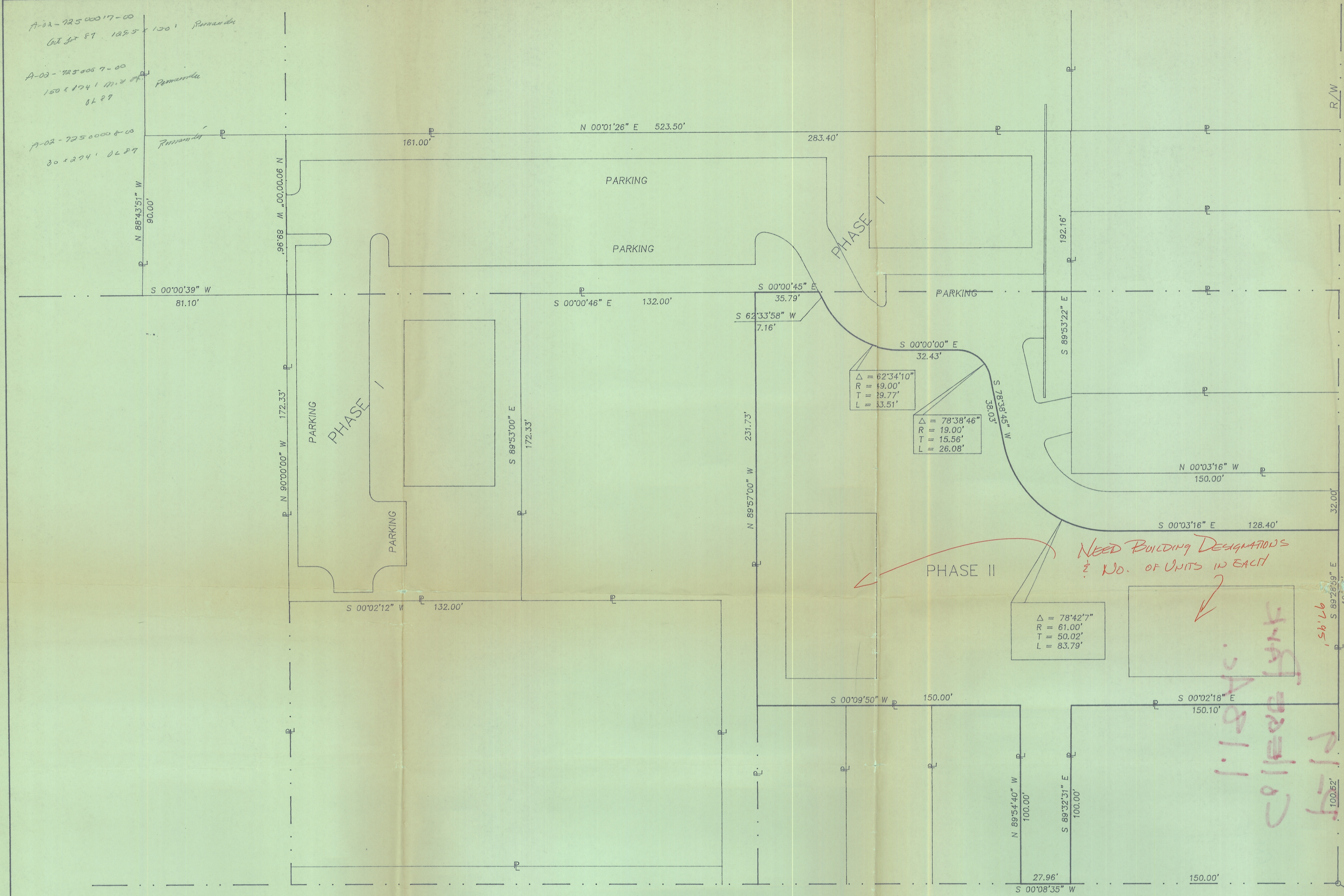
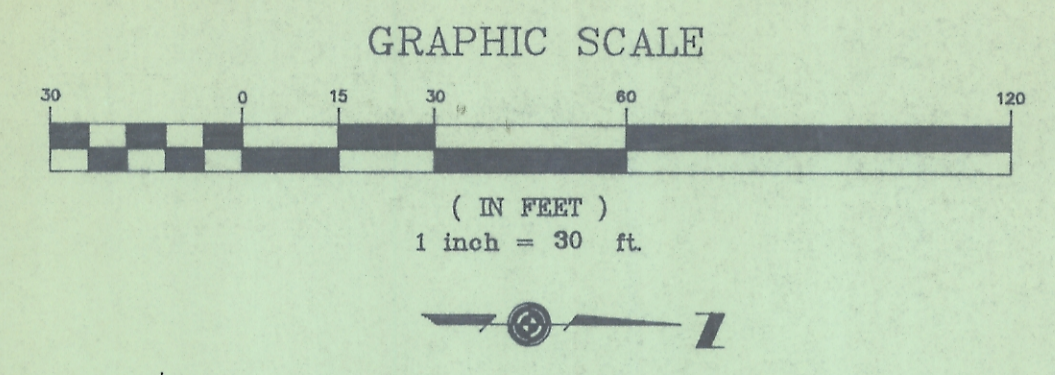


Y-265
 A-02-7250008-08
 57 x 150' w. side O.L.P. 23A. Permitted

A-22-72500017-00
 Outlot 87 125.5 x 150' Permitted
 A-02-7250007-00
 150 x 174' 11.2' Permitted
 O.L.P.
 A-02-7250008-08
 80 x 224' O.L.P.



$\Delta = 82^{\circ}34'10''$
 $R = 19.00'$
 $T = 39.77'$
 $L = 13.51'$

$\Delta = 78^{\circ}38'46''$
 $R = 19.00'$
 $T = 15.56'$
 $L = 26.08'$

$\Delta = 78^{\circ}42'7''$
 $R = 61.00'$
 $T = 50.02'$
 $L = 83.79'$

NEED BUILDING DESIGNATIONS
 & NO. OF UNITS IN EACH

1.1842
 COLLEGE PARK
 PHASE II

LEGAL DESCRIPTION
 PHASE II

Located in Outlot 87, in the City of Athens, Athens Township, T 9 N - R 14 W, Ohio River Survey, Athens County, State of Ohio and more particularly described as follows:

Beginning for reference at the northeast corner of Outlot No. 87, thence N 89° 28' 59" W with the south right-of-way line of West Union Street, the north line of Outlot 87, a distance of 100.52 feet to the true place of beginning of the tract herein described;

thence S 00° 02' 18" E a distance of 150.10 feet to a point;

thence S 89° 32' 31" E a distance of 100.00 feet to a point in the west right-of-way line of South Shafer Street;

thence with said right-of-way line, S 00° 08' 35" W a distance of 27.96 feet to a point;

thence N 89° 54' 40" W a distance of 100.00 feet to a point;

thence S 00° 09' 50" W a distance of 150.00 feet to a point in the south line of Outlot No. 87;

thence with said south line N 89° 57' 00" W a distance of 231.73 feet to the southwest corner of Outlot 87;

thence with the west line of Outlot 87, N 00° 00' 46" W a distance of 35.79 feet to a point;

thence N 62° 33' 58" E a distance of 7.16 feet to a point;

thence with a curve to the left having a radius of 49.00 feet, a length of 53.51 feet and a chord that bears N31° 16' 59" E 50.89 feet;

thence N 00° 00' 00" E a distance of 32.43 feet to a point;

thence with a curve to the right having a radius of 19.00 feet, a length of 26.08 feet and a chord that bears N 39° 19' 23" E, a distance of 24.08 feet;

thence N 78° 38' 45" E a distance of 38.03 feet to a point;

thence with a curve to the left having a radius of 61.00 feet, a length of 83.79 feet and a chord that bears N 39° 17' 45" E, 77.36';

thence N 00° 03' 16" W a distance of 128.40 feet to a point in the south right-of-way line of West Union Street;

thence with said south right-of-way line S 89° 28' 59" E a distance of 97.95 feet to the place of beginning and containing 1.179 Acres more or less.

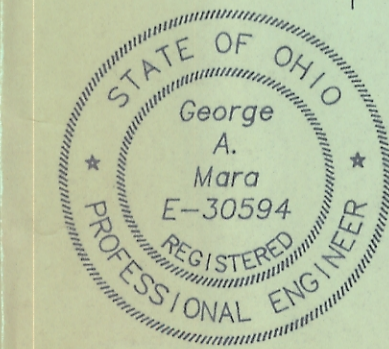
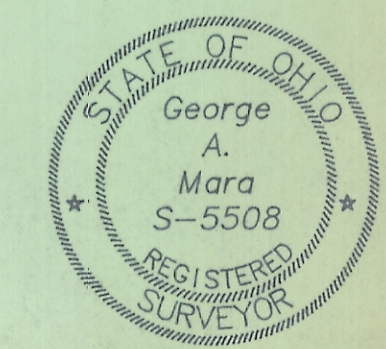
South Shafer Street

Point of Beginning

South Shafer Street

Moore Street

West Union Street



George A. Mara
 George A. Mara, P.E., P.S.

Owner, College Park Partnership

GEORGE A. MARA ENGINEERING, Inc. CONSULTING ENGINEERS ATHENS, OHIO	
COLLEGE PARK PHASE II	
CONTRACT	JOB NO. AS-345
DRAWN BY:	SCALE: 1"=30'
CHECKED BY:	DATE: March 1992
APPROVED BY:	SHEET 1 OF 1