

**DESCRIPTION OF A 5.100 ACRE TRACT**

Situated in Section 1, T.10, R.14, Dover Township, Athens County, Ohio and being a part of a tract of land as described in Volume 99, Page 85 of the Official Records of Athens County and being more particularly described follows:

Beginning at a hickory tree as called for in the Honey Lou Reeves Deed ( 379, 648) and being the south-west corner of the Reeves tract, said tree bears North 86 degrees 40 minutes 52 seconds West, 1287.55 feet and North 03 degrees 19 minutes 08 seconds East, 1021.02 feet from the South-east corner of Section 6;

Thence, along the south-line of Reeves ( 379-648) , South 86 degrees 40 minutes 52 seconds East, 637.61 feet to a point in Township Road 213, passing an iron pin set at 580.26 feet;

Thence, along said road, South 21 degrees 49 minutes 54 seconds East, 63.38 feet to a point;

Thence, South 42 degrees 39 minutes 24 seconds East, 68.16 feet to a point;

Thence, South 51 degrees 01 minutes 41 seconds East, 64.80 feet to a point;

Thence, leaving said road and along new-lines created by this survey:

South 41 degrees 48 minutes 55 seconds West, 226.80 feet to an iron pin set, passing an iron pin set at 57.00 feet;

North 85 degrees 06 minutes 54 seconds West, 664. 78 feet to an iron pin set;

Thence, North 10 degrees 46 minutes 29 seconds East, 304.42 feet to the point of beginning and containing 5.100 acres.

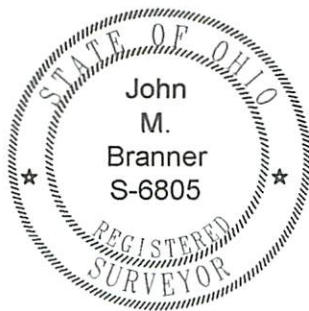
Subject to all easements and rights of way of record.

Iron pins set are 5/8' by 30" long rebar.

Bearings are based on Grid North (NAD 83)

The above description is based on a field survey completed April 2011 by John M. Branner P.S. 6805

*John M Branner*



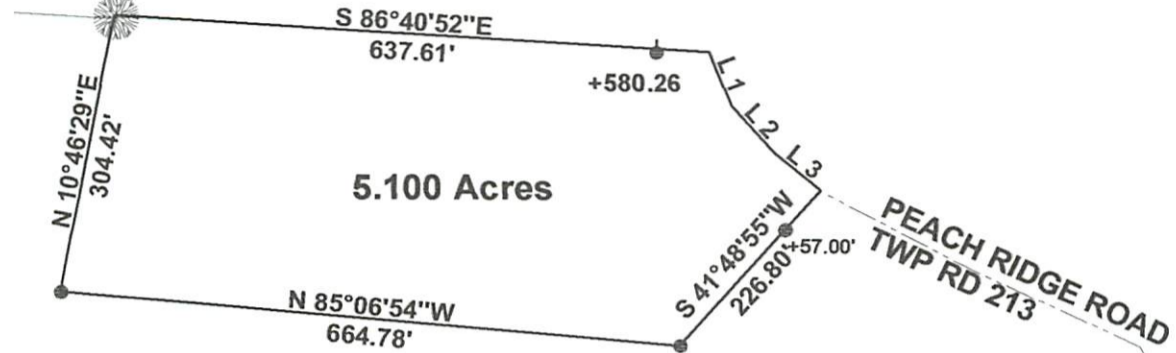
Description Checked for  
Mathematical Accuracy  
Athens County  
ENGINEER'S OFFICE  
BY: S. Blaus  
DATE: 4-26-11

Line	Bearing	Distance
1	S 21°49'54"E	63.38'
2	S 42°39'24"E	68.16'
3	S 51°01'41"E	64.80'
6	S 20°49'01"W	50.29'

P.O.B. BEARS  
 N 86°40'52" W, 1287.55'  
 N 3°19'08" E, 1021.02'  
 FROM S.E. COR OF SEC.6

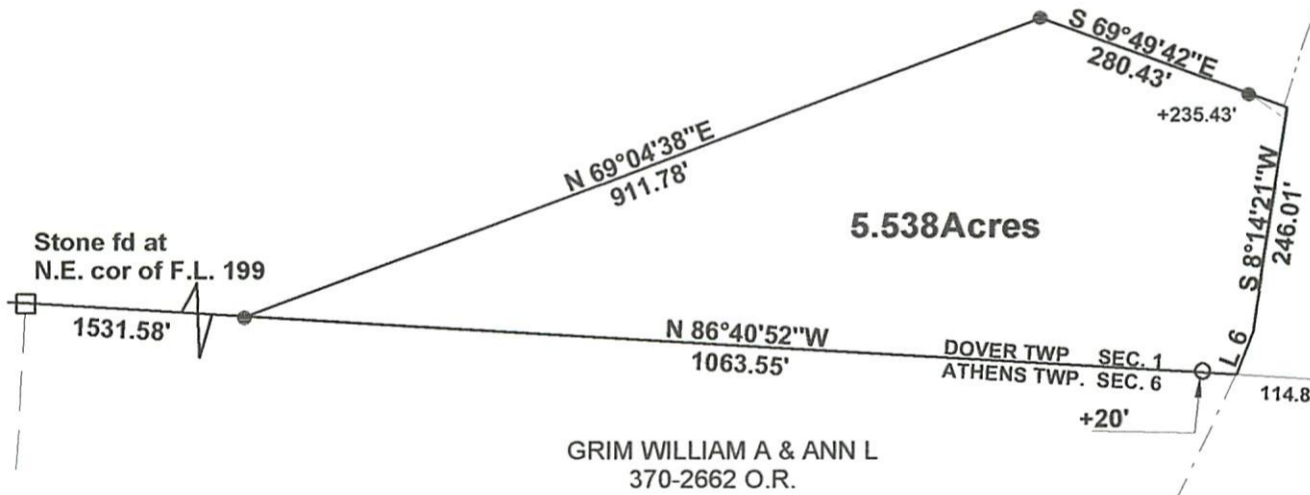
REEVES HONEY LOU  
 379-648

HICKORY TREE  
 AS PER REEVES DEED



5.100 Acres

BLACK  
 99-85 O.R.



5.538 Acres

Stone fd at  
 N.E. cor of F.L. 199

GRIM WILLIAM A & ANN L  
 370-2662 O.R.

Description Checked for  
 Mathematical Accuracy  
 Athens County  
 ENGINEER'S OFFICE  
 BY: S. Blause  
 DATE: 4-26-11

Survey of Two Tracts in  
 Section 1, T.10, R.14,  
 Dover Township, Athens Co., O  
 Surveyed April 2011

*John M. Branner*  
 John M. Branner P.S. 6805  
 12500 N. Peach Ridge Rd.  
 Athens, Ohio 45701  
 740-592-5778



Scale 1 inch = 200 feet

- = Iron Pin Set 5/8"x30" long rebar
- = Iron Pin Found
- Bearings Based on Grid North NAD 83