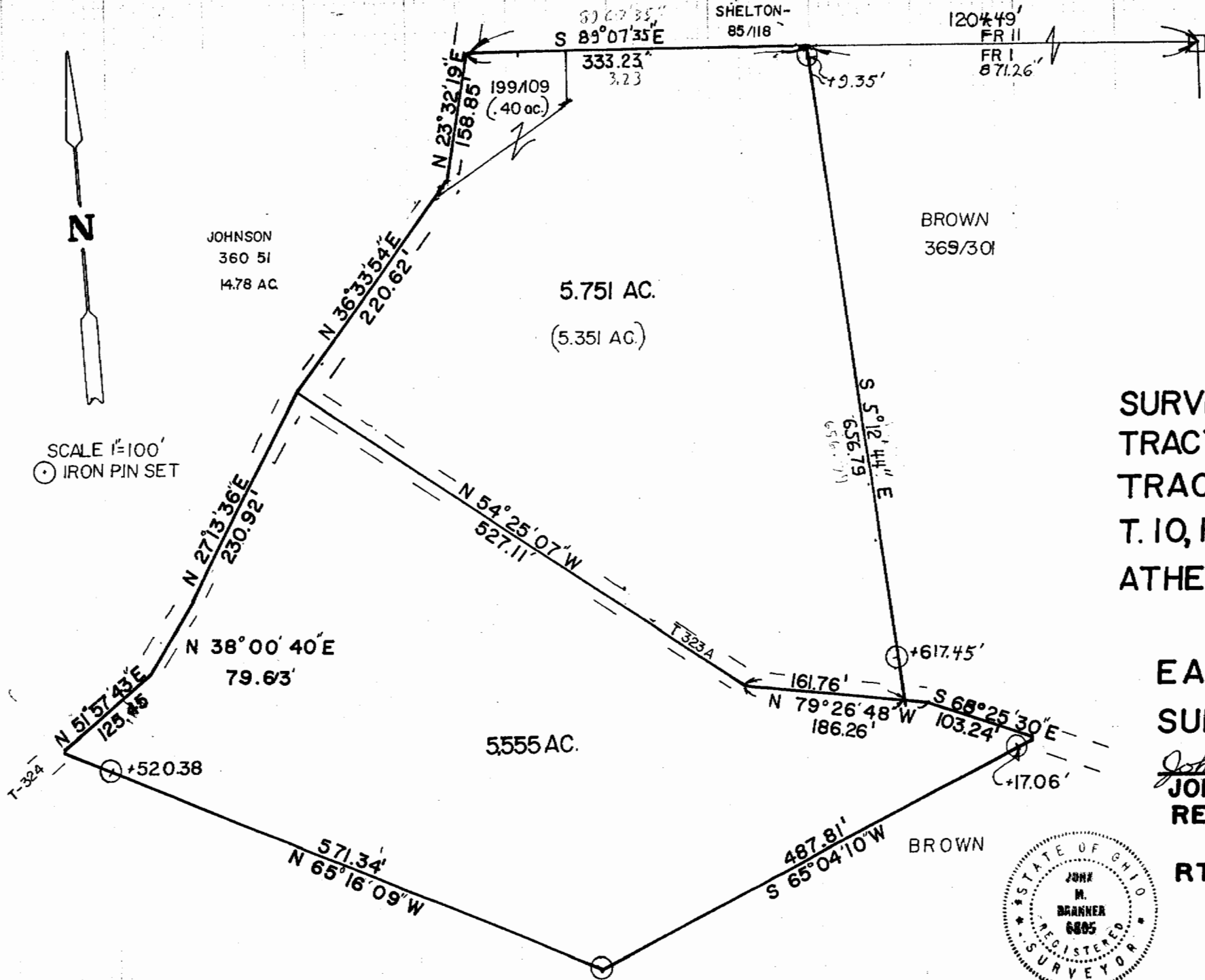


SCALE 1"=100'
IRON PIN SET



STONE FD.
NE COR OF
FR. I

Description checked for
Mathematical Accuracy
ATHENS COUNTY
ENGINEER'S OFFICE
BY: *Charles Whitney*
DATE: 8-20-84

**SURVEY OF A 5.751 ac.
TRACT AND A 5555 ac.
TRACT IN FR. I, SEC 14,
T. 10, R. 14, DOVER TWP.
ATHENS CO. OHIO.**

**FOR
EARL BROWN
SURVEYED AUG. 84**

John M. Branner
**JOHN M. BRANNER
REG. LAND SURVEYOR
6805
RT. 3, ATHENS OHIO
614-592-5778**

