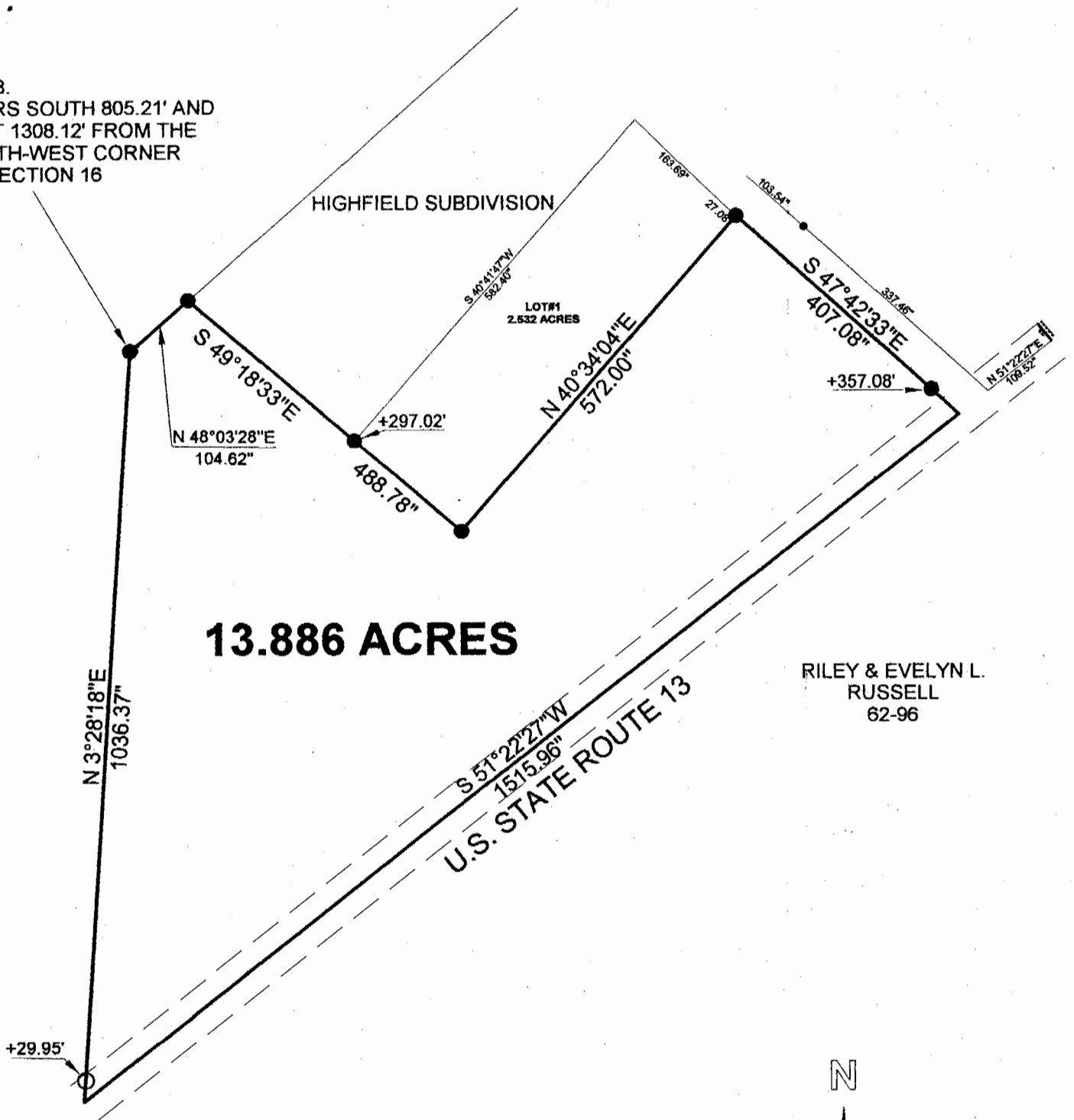




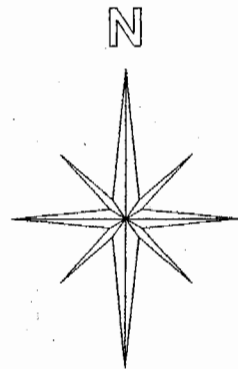
P.O.B.  
 BEARS SOUTH 805.21' AND  
 EAST 1308.12' FROM THE  
 NORTH-WEST CORNER  
 OF SECTION 16



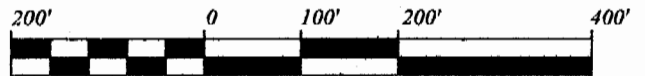
**13.886 ACRES**

RILEY & EVELYN L.  
 RUSSELL  
 62-96

U.S. STATE ROUTE 13



Graphic Scale



1 INCH = 200 FEET

**SURVEY OF A 13.886 ACRE TRACT  
 SECTION 16, T. 10, R. 14, DOVER TOWNSHIP,  
 ATHENS COUNTY, OHIO  
 SURVEYED MARCH 1998**

**JOHN M. BRANNER P.S. 6805  
 12500 N. PEACH RIDGE ROAD  
 ATHENS, OHIO (740) 592-5778**

- = IRON PINS FOUND
- = IRON PINS SET

IRON PINS SET ARE 5/8 INCH  
 BY 30 INCH LONG REBAR AND  
 SET ON ALL LOT CORNERS

BEARINGS ARE BASED ON PARENT DEED

Description checked for  
 Mathematical Accuracy  
 ATHENS COUNTY  
 ENGINEER'S OFFICE  
 BY: *K. Lantieri*  
 DATE: 3-30-98

37