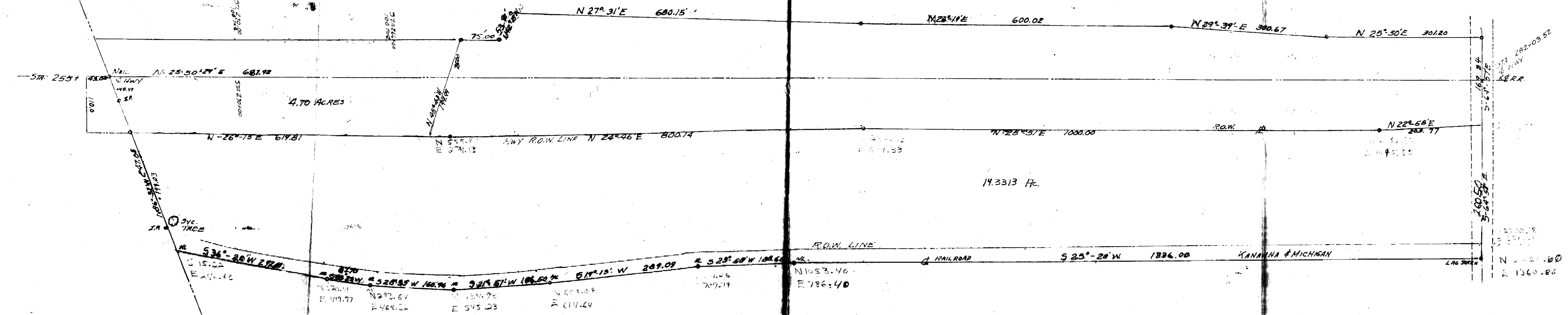
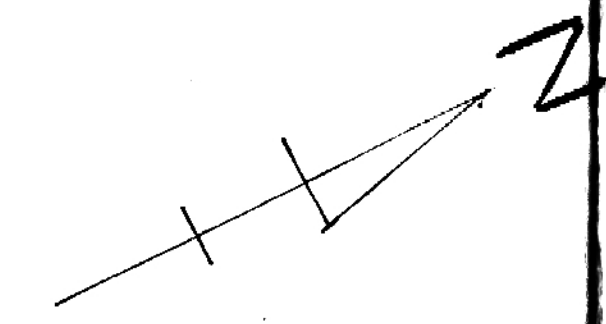


2198.56 TO & S.R. 13

STEVE KOCHIS
240.397, 399
26.294

Description checked for
Mathematical Accuracy
ATHENS COUNTY
ENGINEER'S OFFICE
BY: *[Signature]*
DATE: 6-14-74



NEROUM
N 292.67
E 419.77

W 294.76
E 545.23

N 609.08
E 614.64

N 1053.40
E 786.40

BERT KOZMA
210-380
37.214

SURVEY OF 14.3313 ACRES SITUATED IN SEC. 18, T-10N, RANGE 4
DOVER TWP, ATHENS COUNTY, OHIO.
SOLD BY *[Signature]* GIBSON et al
TO
SURVEYED BY F.A. DIXON REG. ENGR. 9786
DATE JUNE 1, 1974 SURV. 3660
SCALE 1" = 100'

47

48