

BRANNER SURVEYING

MEMBER-PROFESSIONAL LAND SURVEYORS OF OHIO

12500 N. PEACH RIDGE ROAD
ATHENS, OHIO 45701

JOHN M. BRANNER
Registered Land Surveyor

TELEPHONE
(614) 592-5778

DESCRIPTION OF A 18.17 ACRE TRACT

Situated in Section 20, T.10, R.14, Dover Township, Village of Chauncey, Athens County, Ohio and being more particularly described as follows:

Commencing at the North-east corner of Section 20, thence, South 00 Degrees 27 Minutes 38 Seconds West, 363.69 feet to an iron pin found at Grantor's North-east corner, said pin being the POINT OF BEGINNING;

thence South 0 degrees 27 minutes 38 seconds West, a distance of 435.60 feet to a point in Sunday Creek;

thence, along said creek, South 9 degrees 13 minutes 42 seconds West, a distance of 126.62 feet;

thence North 85 degrees 57 minutes 21 seconds West, a distance of 85.65 feet;

thence South 82 degrees 04 minutes 43 seconds West, a distance of 114.20 feet;

thence South 30 degrees 55 minutes 40 seconds West, a distance of 126.88 feet;

thence South 24 degrees 44 minutes 43 seconds West, a distance of 115.53 feet;

thence South 5 degrees 00 minutes 03 seconds East, a distance of 95.84 feet;

thence, leaving said creek South 89 degrees 43 minutes 58 seconds West, a distance of 825.67 feet, passing an iron pin set at 96 feet and 573.48 feet;

thence North 0 degrees 16 minutes 02 seconds West, a distance of 270.91 feet to an iron pin set in the North-line of a 12 feet wide alley;

thence North 89 degrees 43 minutes 58 seconds East, a distance of 290.36 feet to an iron pin set;

thence North 16 degrees 02 minutes 29 seconds West, a distance of 98.00 feet; thence

continuing North 16 degrees 02 minutes 29 seconds ~~west~~, along said line, a distance of 342.85 feet;

thence North 24 degrees 32 minutes 14 seconds West, a distance of 190.90 feet to an iron pin set near a fence post;

thence, North 89 degrees 15 minutes 38 seconds East, a distance of 1065.32 feet to the POINT OF BEGINNING; said described tract containing 18.17 acres.

Subject to all easements and rights of way of record.

Description checked for
Mathematical Accuracy
ATHENS COUNTY
ENGINEER'S OFFICE

BY: S. Blausen
DATE: 7-27-93

Dover # 20

57

BRANNER SURVEYING

MEMBER-PROFESSIONAL LAND SURVEYORS OF OHIO

12500 N. PEACH RIDGE ROAD
ATHENS, OHIO 45701

JOHN M. BRANNER
Registered Land Surveyor

TELEPHONE
(614) 592-5778

DESCRIPTION OF A 11.31 ACRE TRACT

Situated in Section 20, T.10, R.14, Dover Township, Village of Chauncey, Athens County, Ohio and being more particularly described as follows:

Commencing at the North -east corner of Section 20, thence, South 00 Degrees 27 Minutes 38 Seconds West, 363.69 feet to an iron pin found at Grantor's North-east corner ; thence, South 89 Degrees 15 Minutes 38 Seconds West, 1065.32 feet to an iron pin set near a fence corner, said pin being the POINT OF BEGINNING;

thence South 24 degrees 32 minutes 14 seconds East, a distance of 190.90 feet to an iron pin set;

thence South 16 degrees 02 minutes 29 seconds East, a distance of 342.85 feet to an iron pin set;

thence continuing South along said line South 16 Degrees 02 Minutes 29 Seconds East, a distance of 98.00 feet to an iron pin set;

thence South 89 degrees 44 minutes 00 seconds West, a distance of 867.74 feet to a point on the North-line of a 12 feet wide alley, an iron pin set bears South 01 Degrees 18 Minutes 25 Seconds East, 2.66 feet;

thence North 1 degrees 18 minutes 25 seconds West, a distance of 251.13 feet to an iron pin ;

thence South 89 degrees 15 minutes 15 seconds West, a distance of 74.99 feet to an iron pin found;

thence North 2 degrees 29 minutes 02 seconds West, a distance of 329.71 feet to an iron pin found in the South-line of a 12 feet wide alley;

thence, along said line, North 89 degrees 15 minutes 38 seconds East, a distance of 123.39 feet;

thence North 0 degrees 44 minutes 22 seconds East, a distance of 12.07 feet to an iron pin found;

thence North 89 degrees 15 minutes 38 seconds East, a distance of 638.15 feet to the POINT OF BEGINNING; said described tract containing 11.31 acres.

Subject to all easements and rights of way of record.

Description checked for
Mathematical Accuracy
ATHENS COUNTY
ENGINEER'S OFFICE
BY: S. Blausen
DATE: 7-27-93

58

BRANNER SURVEYING
MEMBER-PROFESSIONAL LAND SURVEYORS OF OHIO

12500 N. PEACH RIDGE ROAD
ATHENS, OHIO 45701

JOHN M. BRANNER
Registered Land Surveyor

TELEPHONE
(614) 592-5778

DESCRIPTION OF A 50 FEET WIDE EASEMENT FOR INGRESS AND EGRESS

Situated in Section 20, T.10, R.14, Dover Township, Village of Chauncey, Athens County, Ohio and being more particularly described as follows:

Commencing at the North-east corner of Section 20, thence, South 00 Degrees 27 Minutes 38 Seconds West, 363.69 feet to an iron pin found at Grantor's North-east corner. thence South 0 degrees 27 minutes 38 seconds West, a distance of 435.60 feet to a point in Sunday Creek;

thence, along said creek, South 9 degrees 13 minutes 42 seconds West, a distance of 126.62 feet;

thence North 85 degrees 57 minutes 21 seconds West, a distance of 85.65 feet;

thence South 82 degrees 04 minutes 43 seconds West, a distance of 114.20 feet;

thence South 30 degrees 55 minutes 40 seconds West, a distance of 126.88 feet;

thence South 24 degrees 44 minutes 43 seconds West, a distance of 115.53 feet;

thence South 5 degrees 00 minutes 03 seconds East, a distance of 95.84 feet;

thence, South 89 degrees 43 minutes 58 seconds west, 825.67 feet to the point of beginning for the easement herein described:

thence, North 00 Degrees 16 Minutes 02 Seconds West, 270.91 feet to an iron pin;

thence, North 89 Degrees 43 Minutes 58 Seconds East, 50.00 feet to a point;

thence, South 00 Degrees 16 Minutes 02 Seconds East, 270.91 feet;

thence, South 89 degrees 43 minutes 58 seconds west, 50 feet to the point of beginning.

661

BRANNER SURVEYING
MEMBER-PROFESSIONAL LAND SURVEYORS OF OHIO

12500 N. PEACH RIDGE ROAD
ATHENS, OHIO 45701

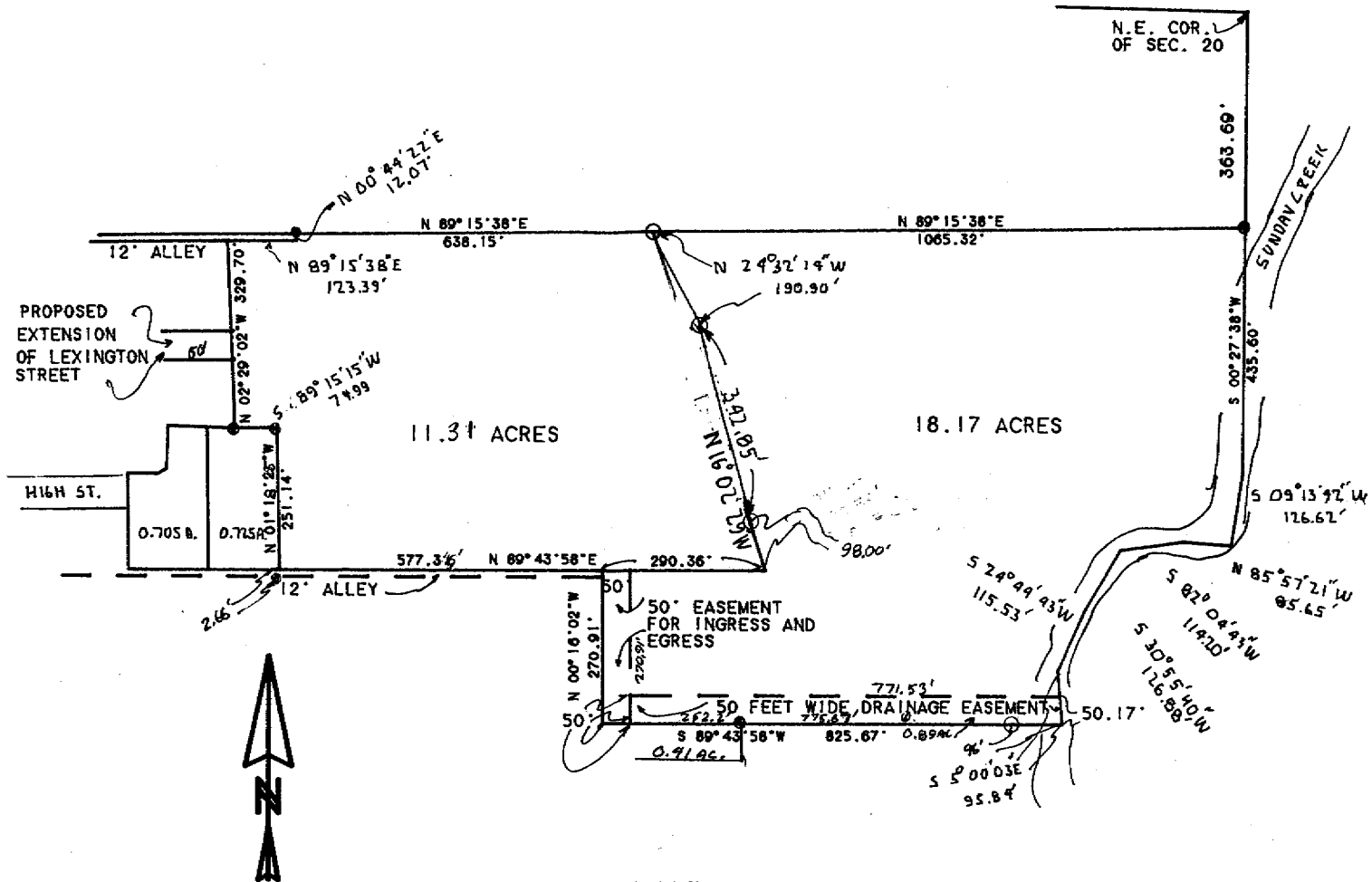
JOHN M. BRANNER
Registered Land Surveyor

TELEPHONE
(614) 592-5778

DESCRIPTION OF A 50 FEET WIDE DRAINAGE EASEMENT

Situated in Section 20, T.10, R.14, Dover Township, Village of Chauncey, Athens County, Ohio and being more particularly described as follows:

Commencing at the North-east corner of Section 20, thence, South 00 Degrees 27 Minutes 38 Seconds West, 363.69 feet to an iron pin found at Grantor's North-east corner ;thence South 0 degrees 27 minutes 38 seconds West, a distance of 435.60 feet to a point in Sunday Creek;
thence, along said creek, South 9 degrees 13 minutes 42 seconds West, a distance of 126.62 feet;
thence North 85 degrees 57 minutes 21 seconds West, a distance of 85.65 feet;
thence South 82 degrees 04 minutes 43 seconds West, a distance of 114.20 feet;
thence South 30 degrees 55 minutes 40 seconds West, a distance of 126.88 feet;
thence South 24 degrees 44 minutes 43 seconds West, a distance of 115.53 feet;
thence South 5 degrees 00 minutes 03 seconds East, a distance of 95.84 feet to the point of beginning;
Thence, South 89 Degrees 43 Minutes 58 Seconds West, 775.67 feet;
thence, North 00 Degrees 16 Minutes 02 Seconds West, 50.00 feet to a point; thence, North 89 degrees 43 Minutes 58 Seconds east, 771.53 feet to a point in Sunday Creek;
thence, along Sunday Creek, South 05 Degrees 00 Minutes 03 Seconds East, 50.17 feet to the point of beginning.



SCALE 1 INCH = 200 FEET
 - IRON PIN SET
 - IRON PIN FOUND

SURVEY OF A 18.17 ACRE TRACT AND A
 11.31 ACRE TRACT IN SECTION 20.
 T.10. R.14. DOVER TOWNSHIP.
 VILLAGE OF CHAUNCEY. ATHENS COUNTY, OHIO

SURVEYED JULY 1993

JOHN M. BRANNER P.S. 6805
 12500 N. PEACH RIDGE ROAD
 ATHENS, OHIO 592-5778

63