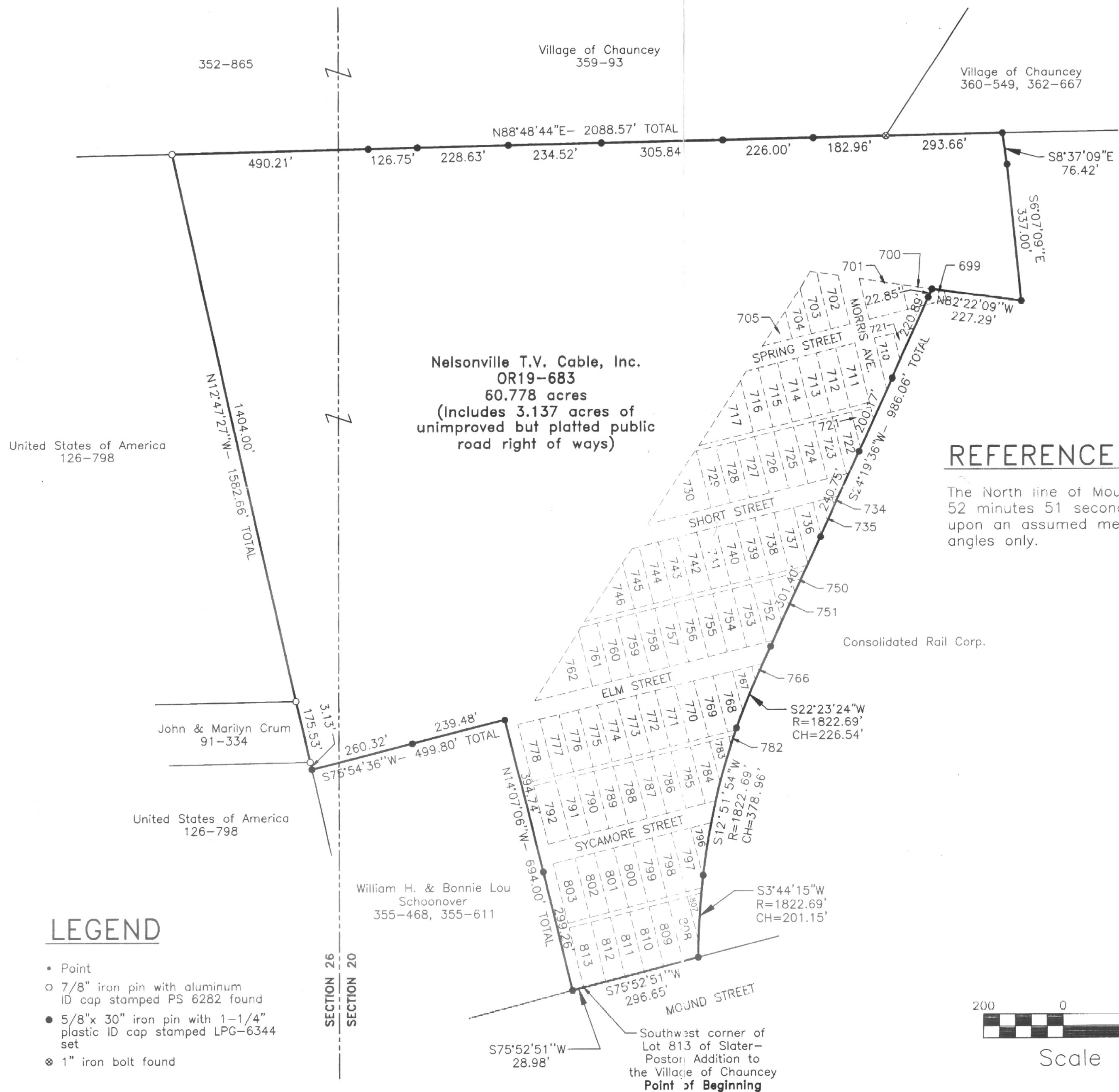


PLAT OF A 60.778 ACRE TRACT FOR NELSONVILLE T.V. CABLE

Situated in Dover Township, Athens County, Ohio; being partially in the Village of Chauncey including all of Lots 701 through 705, 711 through 717, 723 through 730, 738 through 746, 753 through 762, 769 through 778, 785 through 792, 798 through 803, and 809 through 813 and part of Lots 700, 709, 710, 721, 722, 734, 735, 736, 737, 750, 751, 752, 766, 767, 768, 782, 783, 784, 795, 796, 797, 807, and 808, all of the Slater - Poston Addition to the Village of Chauncey as recorded in Plat Cabinet Envelopes 171A and 172B, Athens County Recorder's Office; being part of Sections 20 and 26, Township 10, Range 14.



REFERENCES

- TAX MAPS
- DEED DESCRIPTIONS
- PREVIOUS SURVEYS
- EXISTING MONUMENTATION
- EXISTING RAILROAD
- PLATTED SUBDIVISIONS

REFERENCE BEARING

The North line of Mound Street as South 75 degrees 52 minutes 51 seconds West. Bearings are based upon an assumed meridian and are to denote angles only.

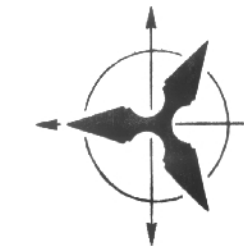


Scale 1" = 200'

LEGEND

- Point
- 7/8" iron pin with aluminum ID cap stamped PS 6282 found
- 5/8"x 30" iron pin with 1-1/4" plastic ID cap stamped LPG-6344 set
- ⊗ 1" iron bolt found

LARRY P. GERSTNER
ENGINEERING & SURVEYING
 9 East Second Street, Suite A, Logan, Ohio 43138
 (614) 385-4260



PLAT OF A 60.778 ACRE TRACT FOR NELSONVILLE T.V. CABLE CHAUNCEY, OHIO

REVISIONS

SCALE: 1" = 200'

JOB NO: 1270 DRAWN BY: RAC DATE: 4/16/97

SHEET



75

76

78