

Tract Two:

Situated in Section 24, T.10, R.14, Dover Township, Athens County, Ohio and being more particularly described as follows:

Beginning at the center of Section 24, thence, with the line of United States of America (238-36 D.R.) and also being the half-section-line, S 4°40'15" W, 248.82 feet to an iron pin set;

Thence, leaving half section line and continuing with the line of United States of America, N 70°31'26" W, 578.38 feet to a point in Oregon Ridge Road (Dover Twp Rd. #409), passing an iron pin set at 530.60 feet;

Thence, along said road the following bearings and distances:

N 58°33'42" E, 61.23 feet

N 47°28'45" E, 88.47 feet

N 21°48'00" E, 88.55 feet

N 10°31'55" E, 90.36 feet

N 14°32'15" E, 66.42 feet

N 16°41'52" E, 161.16 feet

N 28°25'29" E, 62.99 feet

N 47°01'47" E, 48.62 feet

N 55°05'55" E, 54.87 feet

N 65°47'07" E,, 64.62 feet

N 70°33'58" E, 61.51 feet

N 80°53'25" E 160.81 feet to a mag nail set in the half section line;

Thence, leaving said road and along the half section line, S 4°40'15" W , 620.71 feet to the point of beginning and containing 7.152 acres.

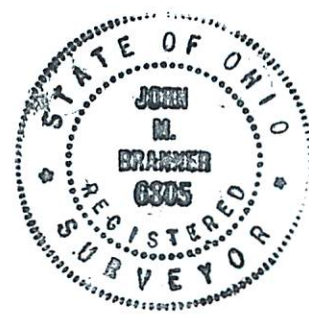
Subject to all easements and rights of way of record.

Iron pins set are 5/8 inch by 30 inch rebar

Bearings based on Grid North N.A.D. 83 Ohio South Zone

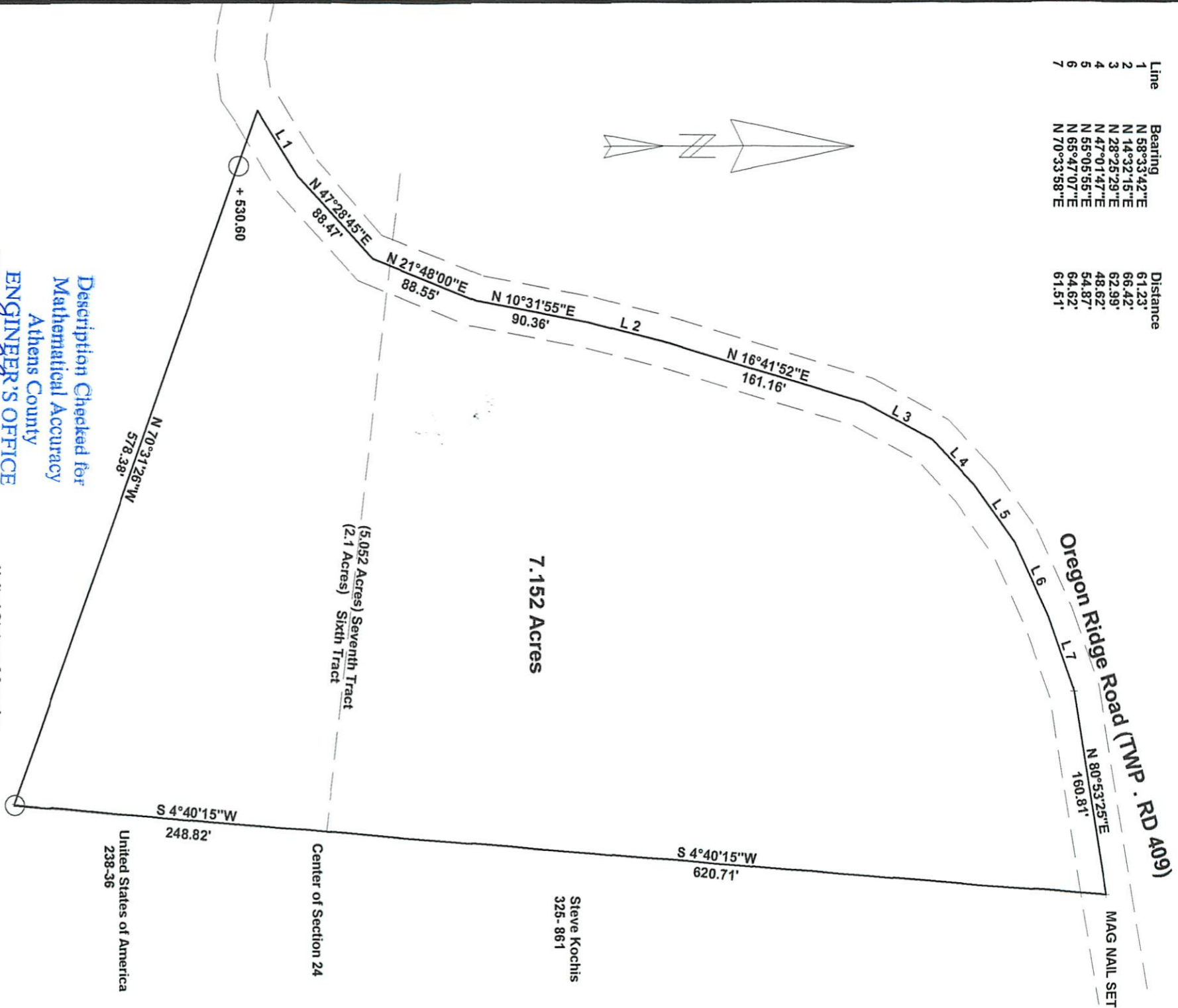
The above description is based on a field survey completed July 2011 by John M.

Branner P.S. 6805



Description Checked for
Mathematical Accuracy
Athens County
ENGINEER'S OFFICE
BY: S. Blause
DATE: 7-15-11

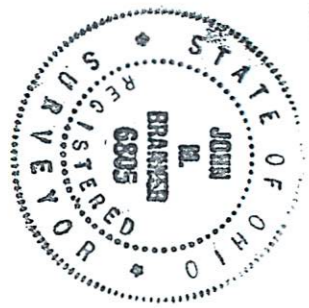
Line	Bearing	Distance
1	N 58°33'42"E	61.23'
2	N 14°32'15"E	66.42'
3	N 28°25'29"E	62.99'
4	N 47°01'47"E	48.62'
5	N 55°05'55"E	54.87'
6	N 65°47'07"E	64.62'
7	N 70°33'58"E	61.51'



Description Checked for
Mathematical Accuracy
Athens County
ENGINEER'S OFFICE
BY: *S. Plaus*
DATE: 7-15-11

Survey of a 7.152 acre tract
in Section 24, T.10, R.14,
Dover Township, Athens Co., O
Surveyed May 2011

John M. Branner
John M. Branner P.S. 6805
12500 N. Peach Ridge Road
Athens, Ohio 45701
740-592-5778



United States of America
238-36

United States of America
238-36

Center of Section 24

(5.052 Acres) Seventh Tract
(2.1 Acres) Sixth Tract

7.152 Acres

Steve Kochis
325-861

MAG NAIL SET



Scale 1 inch = 100 feet

○ = iron pin set 5/8" x 30" rebar

REFERENCES:
Bearings based on Grid North Nad 83
DEEDS-TAX PLAT U.S.G.S. QUAD
V. 7, PG. 73 ATHENS COUNTY SURVEY RECORDS
U.S.F.S. SURVEY RECORDS