

DESCRIPTION OF A 20.00 ACRE TRACT

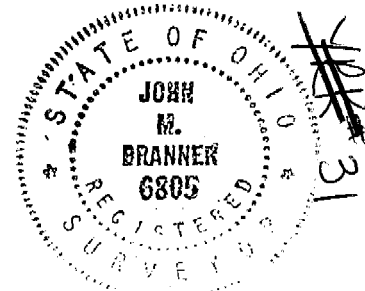
Situated in Section 31 of T.10, R.14 Dover Township and Section 1, T. 12, R.15, York Township and being more particularly described as follows:

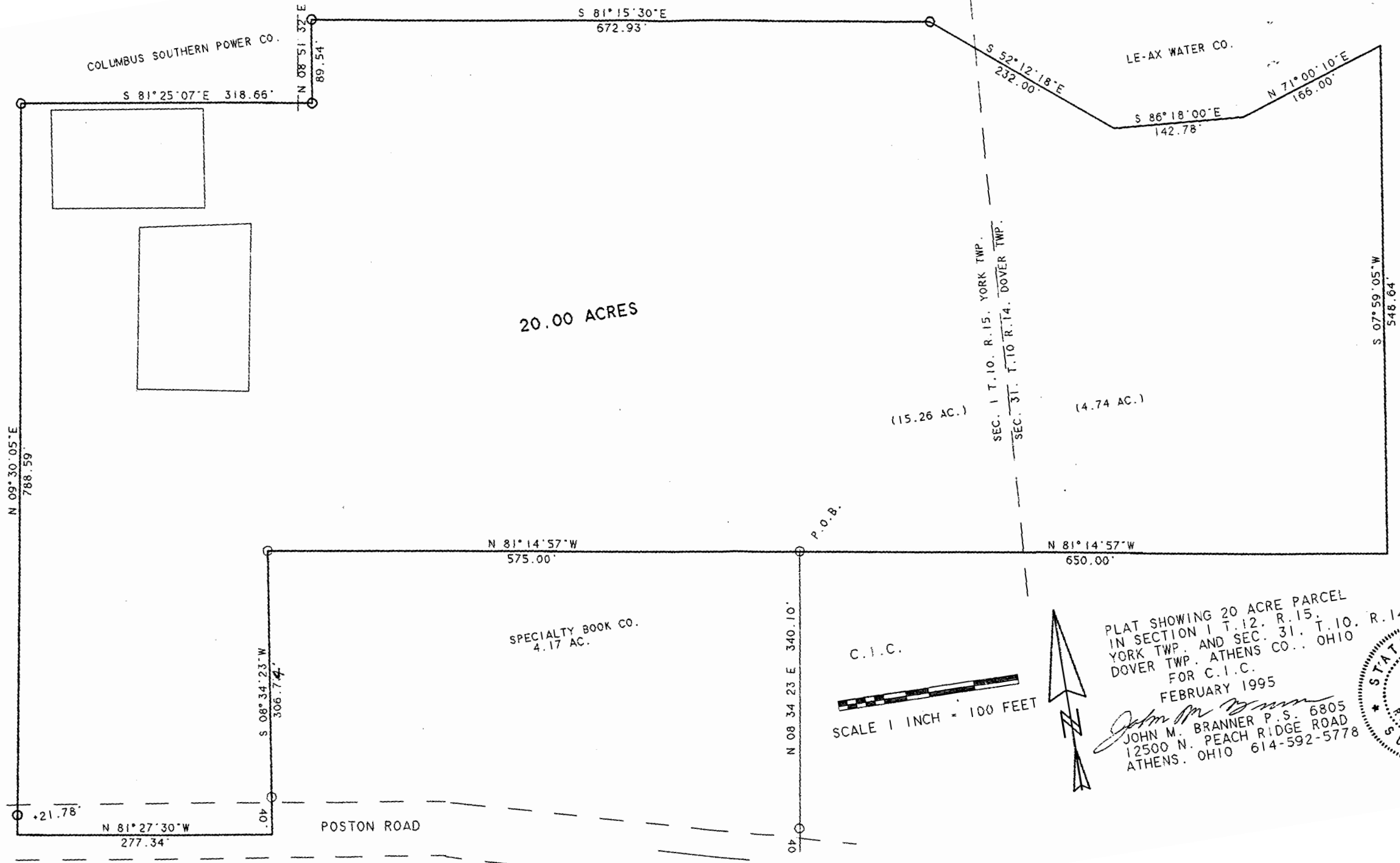
Commencing at a point in the center-line of County Road 110, said point bearing North 3 Degrees 36 Minutes East, 799.44 feet and North 86 Degrees 24 Minutes West, 409.14 feet from the a stone found at the South-east corner of River-lot 362; thence, along County Road 110, South 68 Degrees 52 Minutes 34 Seconds West, 200.49 feet to a point; thence, with a curve to the right 1739.63 feet ( radius = 2864.79 feet; long chord= South 86 Degrees 16 Minutes 20 Seconds West, 1713.02 feet ) to a point; thence, North 76 Degrees 19 Minutes 53 Seconds West, 602.10 feet to a point; thence, leaving said road and along the east- line of a 4.17 acre tract, North 08 Degrees 34 Minutes 23 Seconds East, 340.10 feet to an iron pin at the North-east corner of the 4.17 acre tract and being the POINT OF BEGINNING for the tract of land herein described: thence, along the North-line of the 4.17 acre tract, North 81 degrees 14 minutes 57 seconds West, a distance of 575.00 feet to an iron pin; thence, along the west-line of the 4.17 acre tract, South 8 degrees 34 minutes 23 seconds West, a distance of 306.74 feet to a point in Poston Road, passing an iron pin at 266.74 feet; thence, along said road, North 81 degrees 27 minutes 30 seconds West, a distance of 277.34 feet to a point; thence, leaving Poston Road, and along Grantor's lines, North 9 degrees 30 minutes 05 seconds East, a distance of 788.59 feet to an iron pin; thence South 81 degrees 25 minutes 07 seconds East, a distance of 318.66 feet to an iron pin; thence North 8 degrees 51 minutes 32 seconds East, a distance of 89.54 feet to an iron pin; thence South 81 degrees 15 minutes 30 seconds East, a distance of 672.93 to an iron pin; thence South 52 degrees 12 minutes 18 seconds East, a distance of 232.00 feet to a point; thence South 86 degrees 18 minutes 00 seconds East, a distance of 142.78 feet to a point; thence North 71 degrees 00 minutes 10 seconds East, a distance of 166.00 feet to a point; thence South 7 degrees 59 minutes 05 seconds West, a distance of 548.64 feet to a point; thence, North 81 Degrees 14 Minutes 57 Seconds West, 650.00 feet to an iron pin, said pin being the POINT OF BEGINNING; said described tract containing 20.00 acres.

Subject to all easements and rights of way of record.

*John M. Branner*  
John M. Branner P.S. 6805

Description checked for  
Instrumental Accuracy  
ADAMS COUNTY  
ENGINEERS OFFICE  
BY S. Blausen  
DATE 3-14-95





PLAT SHOWING 20 ACRE PARCEL  
 IN SECTION 1 T. 12. R. 15.  
 YORK TWP. AND SEC. 31. T. 10. R. 14  
 DOVER TWP. ATHENS CO., OHIO  
 FOR C.I.C.  
 FEBRUARY 1995  
 JOHN M. BRANNER P.S. 6805  
 12500 N. PEACH RIDGE ROAD  
 ATHENS. OHIO 614-592-5778

