

Legal Description Pre-Approval
APPROVED
All transfers are subject to
Athens County Conveyance Standards

OCT 02 2015

Jill Thompson
Athens County Auditor

Description Checked for
Mathematical Accuracy
Athens County
ENGINEER'S OFFICE

BY: John M. Branner
DATE: 10/2/15

DESCRIPTION OF A 7.72 ACRE TRACT

Situated in Section 4, T.10, R.14, Dover Township, Athens County, Ohio and being more particularly described as follows:

Beginning at an iron pin set at a fence corner, taken to be the North-west corner of Grantor's 25.54 acre tract (Kasler 418-419 O.R.) that bears 11.75 chains North, and 25.99 chains West from the South-east corner of Section 4;

Thence along new lines created by this survey:

S 83° 00' 42" E, 212.53 feet along fenceline to an iron pin set;

Thence leaving said fenceline following a ditch by the following courses:

S 36° 47' 55" E, 88.25 feet;

S 85° 45' 19" E, 49.26 feet;

S 66° 45' 22" E, 50.48 feet;

S 38° 55' 11" E, 59.58 feet;

S 72° 29' 11" E, 57.89 feet;

S 41° 17' 13" E, 63.38 feet;

S 57° 09' 30" E, 42.65 feet;

S 24° 13' 17" E, 42.15 feet;

S 69° 58' 57" E, 51.51 feet, to an iron pin set;

S 30° 48' 04" W, 181.69 feet, to an iron pin set;

S 17° 14' 55" W, 219.15 feet, to the center of Carl Road (T-329), passing an iron pin set at 193.35 feet;

Thence, along Carl Road the following courses:

N 82° 18' 18" W, 57.35 feet;

N 84° 10' 49" W, 117.21 feet;

N 82° 07' 23" W, 112.40 feet;

N 78° 31' 35" W, 212.70 feet;

N 73° 06' 30" W, 101.95 feet;

N 70° 44' 27" W, 44.90 feet;

N 73° 46' 47" W, 29.26 feet;

N 79° 38' 01" W, 21.29 feet;

S 88° 46' 05" W, 23.76 feet;

S 83° 52' 36" W, 48.67 feet;

Thence leaving said road, and along the Lines of Renz (199-29 D.R.) the following three courses:

N 0° 41' 00" E, 139.49 feet, to a stone found, passing an iron pin set at 34.10 feet;

S 76° 38' 07" E, 289.03 feet, to an iron pin set;

N 4° 06' 48" E, 476.59 feet, to the point of beginning and containing an area of 7.72 acres more or less.

Subject to all easements and rights of way of record.

Iron pins set are 5/8 inch by 30 inch long rebar w/ plastic I.D. Cap stamped "Branner P.S. 6805" Bearing : Grid North - N.A.D. 83

The above description is based on a field survey completed October 2015 by John M. Branner P.S. 6805

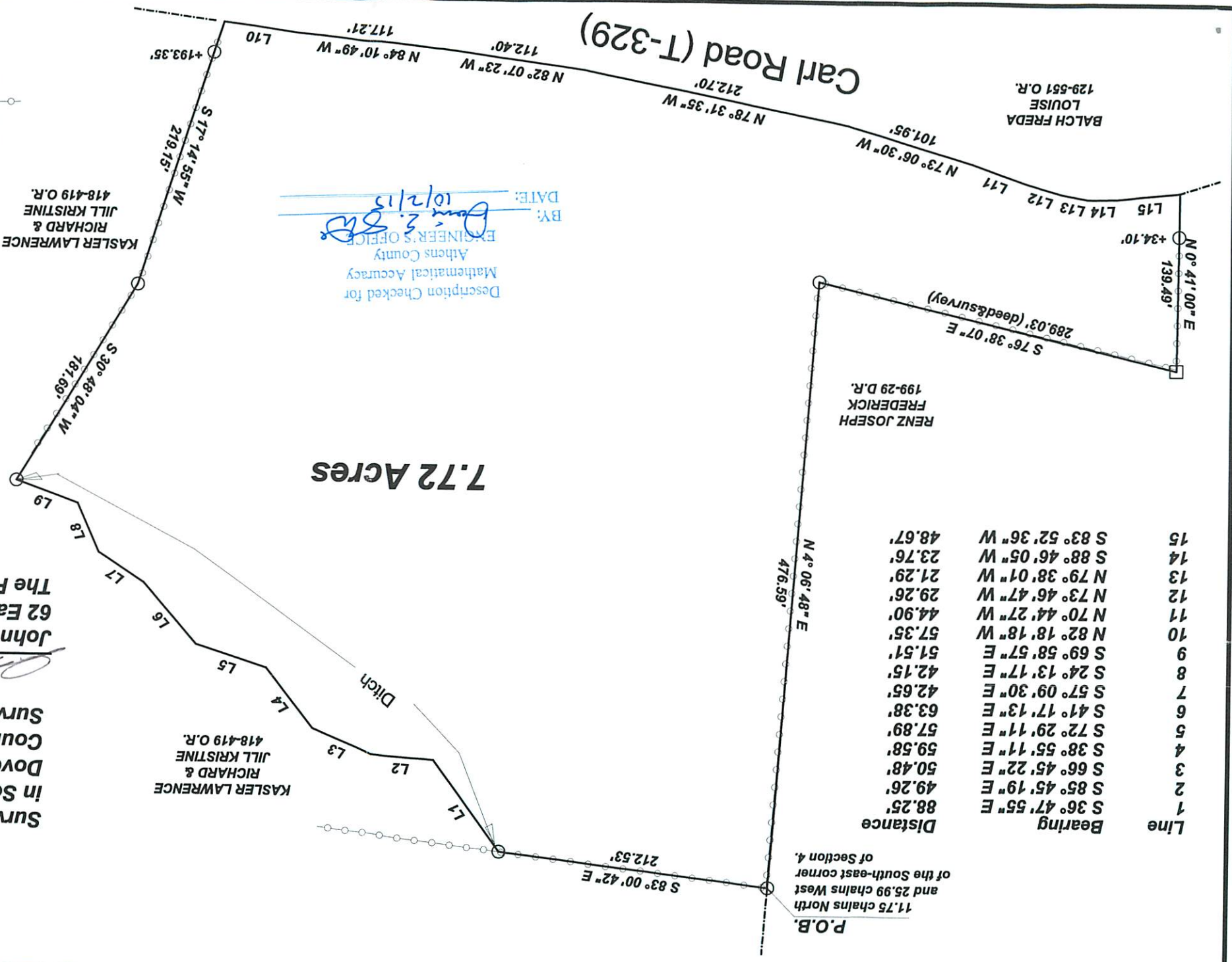
John M. Branner





Scale 1 inch = 100 feet
 ○ = Iron Pin Set 5/8"x30" rebar w/ plastic I.D. cap
 □ = Stone Found
 ○—○ = fence-line
 Bearings: Grid North- N.A.D. 83
 Ref. Docs. Tax Plats, Deeds

Survey of a 7.72 Acre Tract
 in Section 4, T.10, R.14,
 Dover Township, Athens
 County, Ohio
 Surveyed October 2015
 John M. Branner P.S. 6805
 62 East First Street
 The Plains, Ohio 45780



7.72 Acres

BY: *Donna E. Smith*
 DATE: 10/2/15
 ENGINEER'S OFFICE
 Athens County
 Mathematical Accuracy
 Description Checked for

Line	Bearing	Distance
1	S 36° 47' 55" E	88.25'
2	S 85° 45' 19" E	49.26'
3	S 66° 45' 22" E	50.48'
4	S 38° 55' 11" E	59.58'
5	S 72° 29' 11" E	57.89'
6	S 41° 17' 13" E	63.38'
7	S 57° 09' 30" E	42.65'
8	S 24° 13' 17" E	42.15'
9	S 69° 58' 57" E	51.51'
10	N 82° 18' 18" W	57.35'
11	N 70° 44' 27" W	44.90'
12	N 73° 46' 47" W	29.26'
13	N 79° 38' 01" W	21.29'
14	S 88° 46' 05" W	23.76'
15	S 83° 52' 36" W	48.67'

P.O.B.
 11.75 chains North
 and 25.99 chains West
 of the South-east corner
 of Section 4.