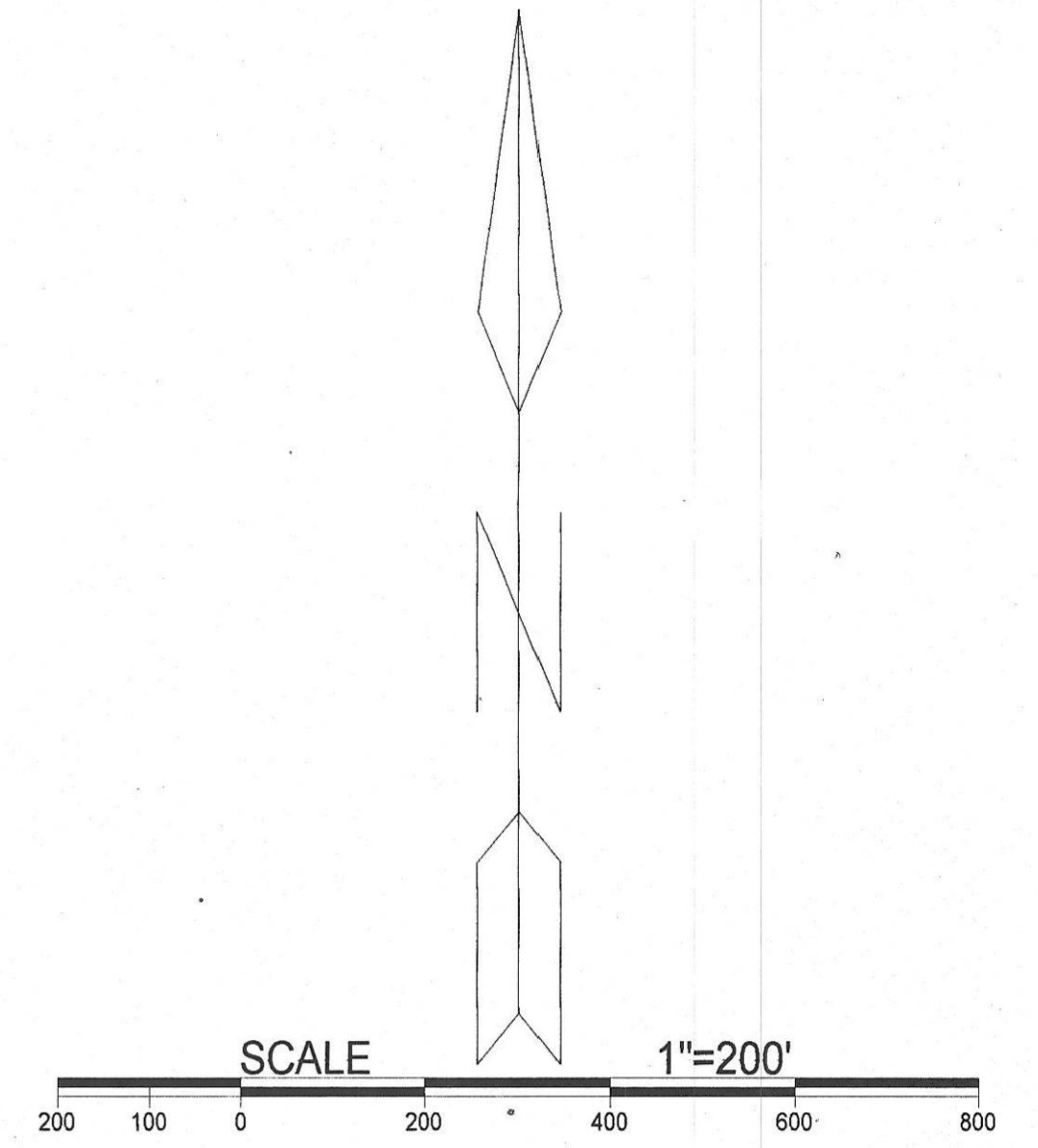
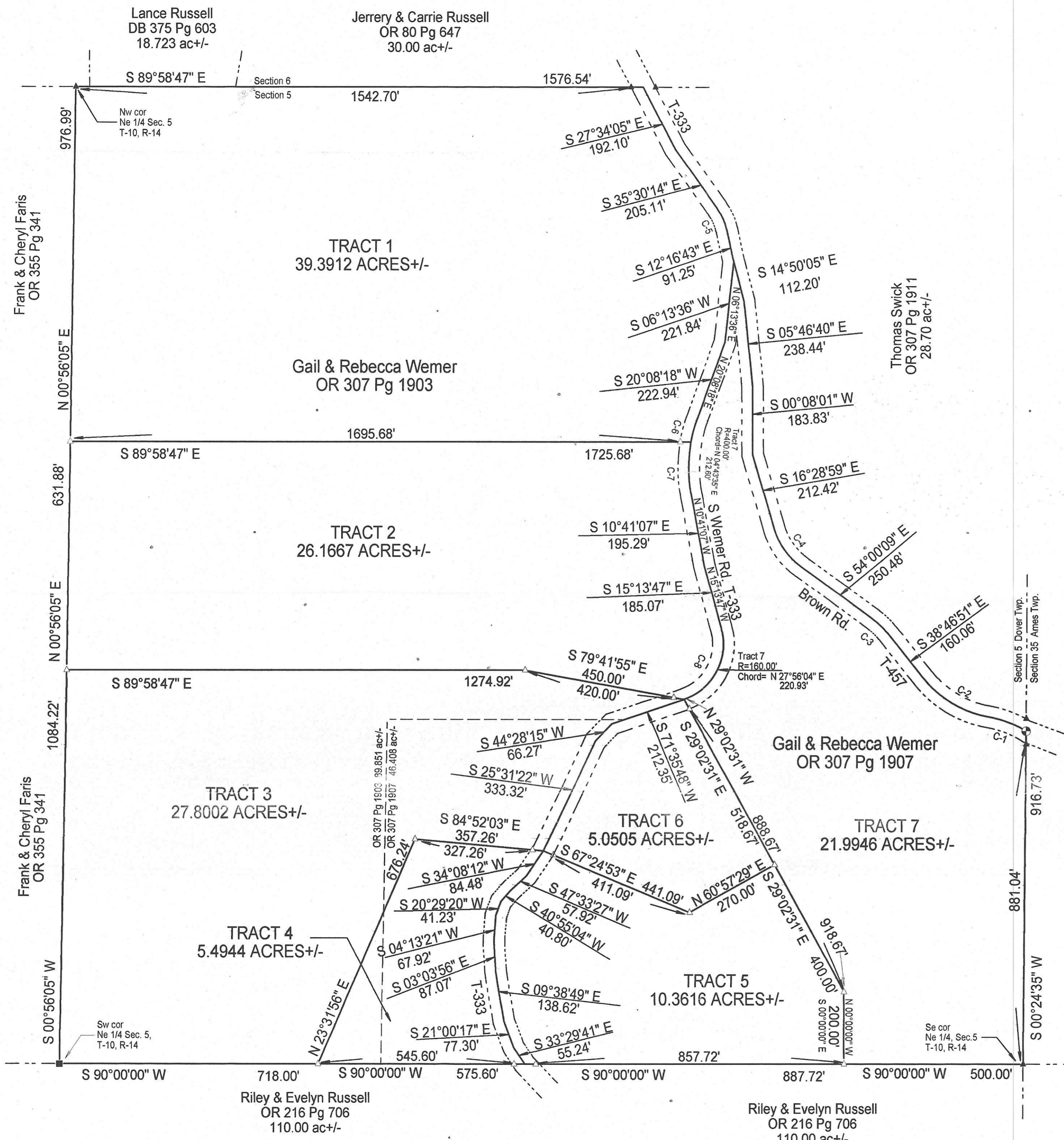


BEING A PART OF THE NORTHEAST QUARTER OF SECTION 5, TOWNSHIP-10, RANGE-14, DOVER TOWNSHIP, ATHENS COUNTY, STATE OF OHIO.



LEGEND

- △ Iron pin set
- ▲ Iron pin found
- Point
- Stone (f)

REFERENCES
 Current Tax Plats
 Previous surveys
 Deeds: as noted
 Aerial Photographs
 U.S.G.S. Topo Maps

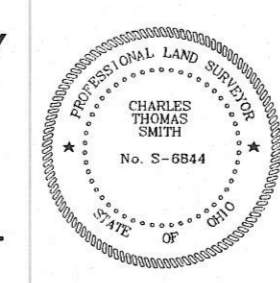
Note: Bearings are assumed and are for the determination of angles only.
 All iron pins set are 5/8"X30" rebar with plastic ID cap stamped "CTS-6844".

Description Checked for
 Mathematical Accuracy
 Athens County
 ENGINEER'S OFFICE
 BY: *S. Blausay*
 DATE: 6-1-12

CURVE DATA

C-1 RADIUS=300.00'	CHORD= S 69°25'33" E	111.91'
C-2 RADIUS=300.00'	CHORD= S 59°28'42" E	212.06'
C-3 RADIUS=200.00'	CHORD= S 46°23'30" E	52.98'
C-4 RADIUS=200.00'	CHORD= S 35°14'34" E	128.64'
C-5 RADIUS=150.00'	CHORD= S 23°53'28" E	60.39'
C-6 RADIUS=400.00'	CHORD= S 15°16'28" W	67.83'
C-7 RADIUS=400.00'	CHORD= S 00°08'14" E	146.45'
C-8 RADIUS=160.00'	CHORD= S 27°56'04" W	220.93'

PLAT PREPARED FROM AN ACTUAL SURVEY MADE ON THE 21ST DAY OF MAY, 2012 BY,
C. Thomas Smith
 C. THOMAS SMITH OHIO PROFESSIONAL SURVEYOR No. 6844



Surveyed and platted by
 C. Thomas Smith
 Ohio Professional Surveyor No 6844
 P.O. Box 393
 Racine, Ohio 45771
 740-949-2524