

**DESCRIPTION OF
30.000 Acres**

Jeffery Russell

Situated in Section 6, Town 10, Range 14, Dover Township, Athens County, Ohio, and

being more fully described as follows:

Commencing at an iron pin found at the Southeast Corner of Said Section 6; thence
along the south line of the section S 89° 59' 11" W 1051.95 feet to a point in the center of
Township Road 333, the Point of Beginning of the tract herein described, passing an iron
pin found

at 1046.10 feet;

Thence, N 89°58'53" W, 1131.06 feet to an iron pin set, passing an iron pin found at
31.72 feet;

Thence, N 10°12'12" E, 1502.98 feet to a point in the center of County Road 37, passing
an iron pin set at 1452.98 feet;

Thence along the center of said road, S 88°23'36" E, 435.05 feet to a point at the
intersection with Township Road 333;

Thence along the center of Township Road 333, S 65°45'38" E, 374.98 feet to a point;

Thence, along a curve to the right having a radius of 108.47 feet, the chord of which
bears S 21°11'57" E for a distance of 152.22 feet to a point;

Thence, S 23°21'43" W, 183.59 feet to a point;

Thence, along a curve to the left having a radius of 576.74 feet, the chord of which bears
S 13°13'30" W for a distance of 203.02 feet to a point;

Thence, S 03°05'16" W, 172.79 feet to a point;

Thence, along a curve to the left having a radius of 477.95 feet, the chord of which bears
S 11°49'05" E for a distance of 245.89 feet to a point;

Description checked for
Mathematical Accuracy
ATHENS COUNTY
ENGINEER'S OFFICE
BY: S. Blausen
DATE: 11-7-02

Dover #6

7

Thence, S 26°43'26" E, 162.13 feet to a point;

Thence, S 08°47'38" E, 250.24 feet to a point;

the **POINT AND PLACE OF BEGINNING CONTAINING 30.000 acres**

Prior Deed Reference 376-603 Athens County Deed Records

Subject to easements, rights-of-way and all covenants and agreements of record.

Charles T. Newman

Charles T. Newman
Registered Surveyor S-8043
66 Elmwood Place
Athens, Ohio 45701

November 4, 2002

C:\My Documents\Descriptions\Jeff Russell.doc



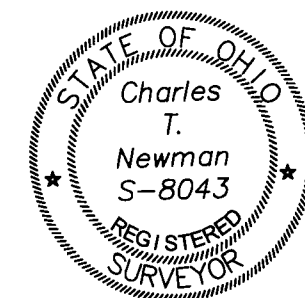


- ⊙ = Iron Pin Found
- = Iron Pin Set

Plat of Survey of 30.000 Acres
 Situated in Section 6, Town 10, Range 14,
 Dover Township, Athens County, Ohio
 Surveyed October 2002 for:
 Jeffery A. Russell

Charles T. Newman
 Charles T. Newman

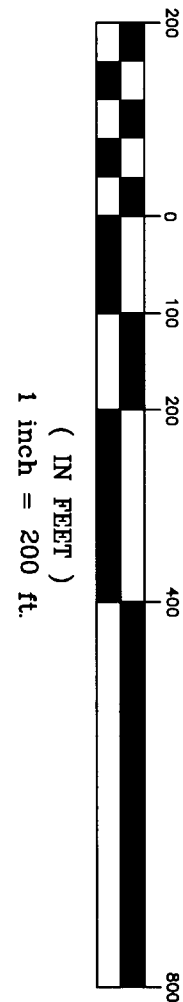
Description checked for
 Mathematical Accuracy
 ATHENS COUNTY
 ENGINEER'S OFFICE
 BY: *S. Blause*
 DATE: *11-7-02*



Professional Surveyor

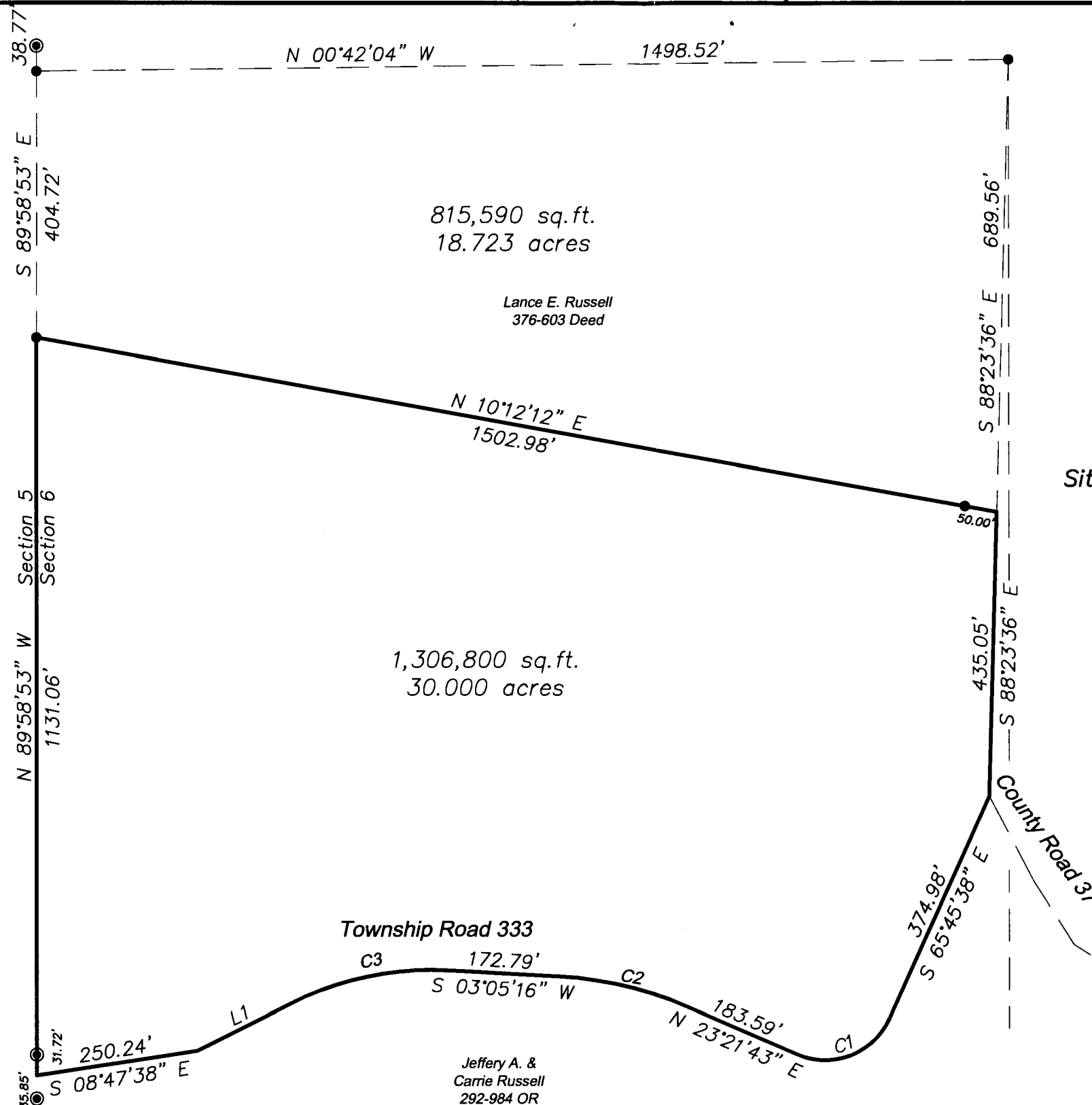
Member of Professional Land Surveyors of Ohio Land Surveys, Subdivisions

66 Elmwood Place Athens, Ohio 45701 740-594-1884
 FAX 740-594-9413



GRAPHIC SCALE

Gail Wemer, etal
 77-388 OR



S 89°59'11" W 1081.95'
 From SE Corner Section 6

LINE TABLE		
LINE	LENGTH	BEARING
L1	162.13	N 26°43'26" W

CURVE TABLE				
CURVE	DELTA	RADIUS	CHORD BEARING	CHORD LENGTH
C1	89°07'22"	108.47	N 21°11'57" W	152.22'
C2	20°16'27"	576.74	S 13°13'30" W	203.02'
C3	29°48'42"	477.95	S 11°49'05" E	245.89'

11

12