

DESCRIPTION OF A 5.013 ACRE TRACT

Situated in Section 7, T. 10, R. 14, Dover Twp. Athens County, Ohio and being a part of a 51.16 acre tract described in Vol. 284, Page 455, Athens County Deed Records and being more particularly described as follows:

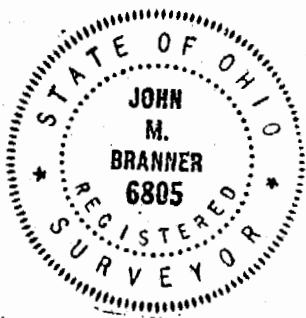
Commencing at the northwest corner of Section 7, Dover Township, Athens County, Ohio ;thence along the North line of said section S 86°15'E, 621.06' to the Northwest corner of Grantor's tract; thence, along Grantor's West line, S 3°30'W, 1794' to Grantor's Southwest corner; thence, along Grantor's South line S86°15'E, 510.90' to an iron pin set,said pin being the point of beginning for the tract of land herein described:

Thence, N 0°21'39"W, 642.10' to an iron pin set; thence, N 45°21'55" E, 112.35' to a point in Dover Township Road 322, passing an iron pin set at 92.45'; thence the following courses and distances along said road:

- S 33°06' E, 36.91' to a point;
- S 53°10' E, 135.50' to a point;
- S 53°44' E, 158.93' to a point;
- S 23°03'45"E, 120.08' to a point;
- S 19°46' W, 119.60' to a point;
- S 12°31' W, 154.81' to a point;
- S 24°35'42" E, 152.70' to a point;
- S 23°57' 59"E, 16.17' to a point;

thence, leaving said road S 89°15'48"W, 149.32' to an iron pin set passing an iron pin set at 18.11' ; thence, N86°15'W, 227.00' to an iron pin,said pin being the point of beginning and containing 5.013 acres.

Subject to all easements and rights of way of record.



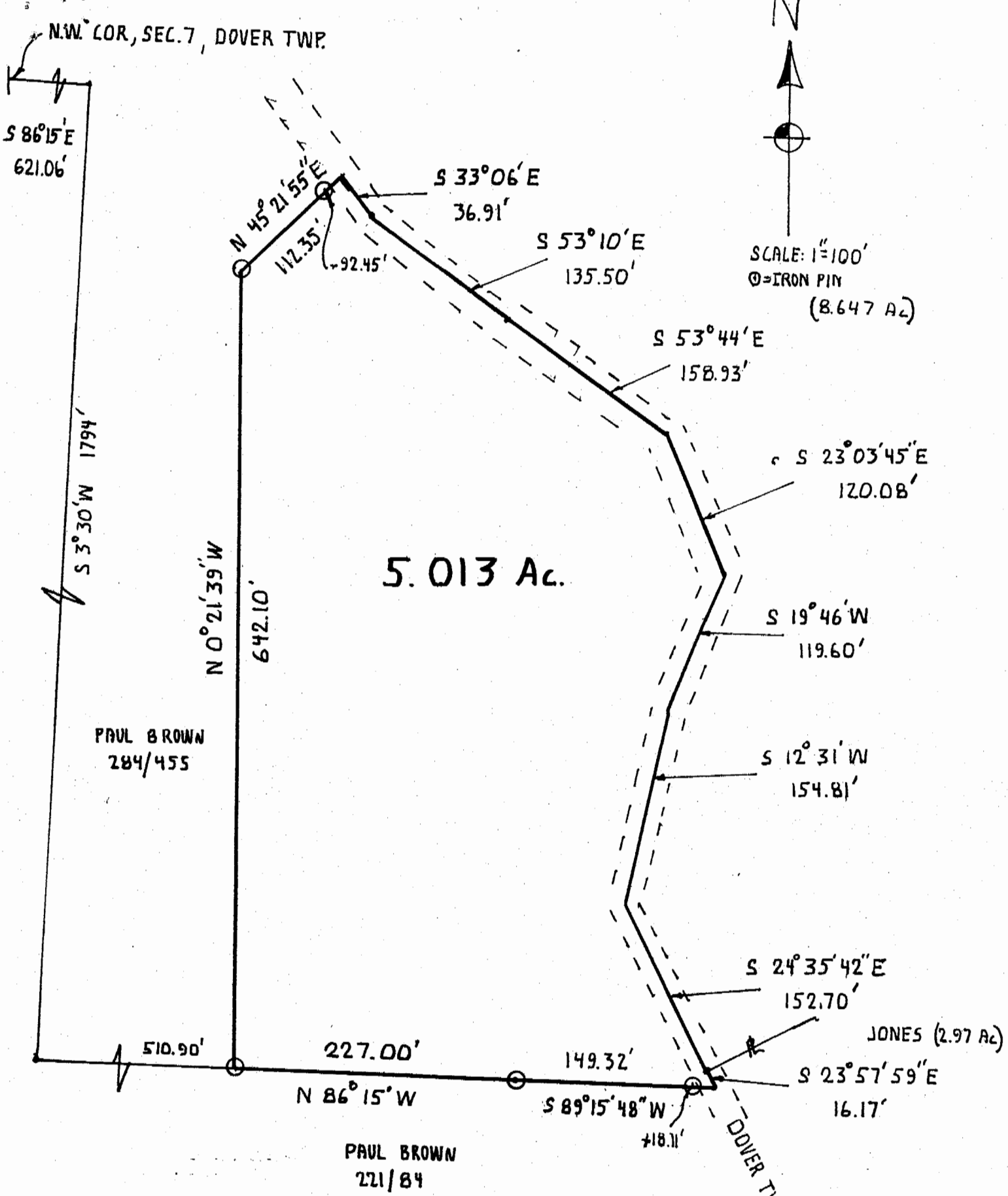
*John M. Branner*  
JOHN M. BRANNER - REG. SURVEYOR-6805

Description checked for  
Mathematical Accuracy  
ATHENS COUNTY  
ENGINEER'S OFFICE

40

*Paul W. Stitt*  
2/18/23

LAND Sec. 7 Dover



Description checked for  
 Mathematical Accuracy  
 ATHENS COUNTY  
 ENGINEER'S OFFICE  
 BY: Arthur W. St. M.  
 DATE: 2/18/83

SURVEY OF A 5.013 ACRE TRACT  
 IN SECTION 7, T. 10, R. 14,  
 DOVER TWP., ATHENS Co., OHIO  
 FOR PAUL BROWN  
 SURVEYED FEB. 83



411 John M. Branner  
 JOHN M. BRANNER - REG. SURVEYOR-6805