

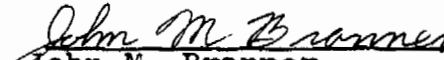
DESCRIPTION OF A 5.005 ACRE TRACT

Situated in Section 7, T.10, R.14, Dover Township, Athens County, Ohio and being a part of a tract of land described in Vol. 221, Page 84, Athens County Deed Records and being more particularly described as follows:

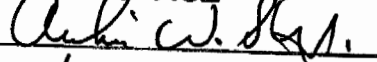
Commencing at the Southeast corner of Section 7, thence, West, 3703.92' (deed) to a point; thence, North 993.30' to a point; thence, S 82°30'E, 456.72' to the intersection of Athens County Road 111 with Dover Township Road 325; thence, along Dover Township Road 325, N 8°20'E, 366.20' to the point of beginning for the tract of land herein described:

Thence, along the North-line of Augustine Cemetary N 82°58'46"W, 107.13' to a point; thence, S 26°05'47"W, 197.73' to a corner with Augustine Cemetary; thence, S 61°25'59"W, 100.94' to a corner with said cemetary; thence, along a random line, N 5°28'27"E, 449.49' to an iron pin set; thence, N 46°17'40"W, 264.54' to an iron pin set; thence, S 82°22'41"W, 87.72' to an iron pin set; thence, N 28°32'52"W, 520.21' to an iron pin set; thence, N 51°54'07"E, 101.85' to an iron pin found at the Northwest corner of a 5.040 acre tract; thence, with the lines of said tract, S 27°14'26"E, 478.52' to an iron pin; thence, S 77°02'25"E, 555.07' to a point in Dover Township Road 325, passing an iron pin at 535.07'; thence, along said road S 11°10'46"W, 382.98' to the point of beginning and containing 5.005 acres.

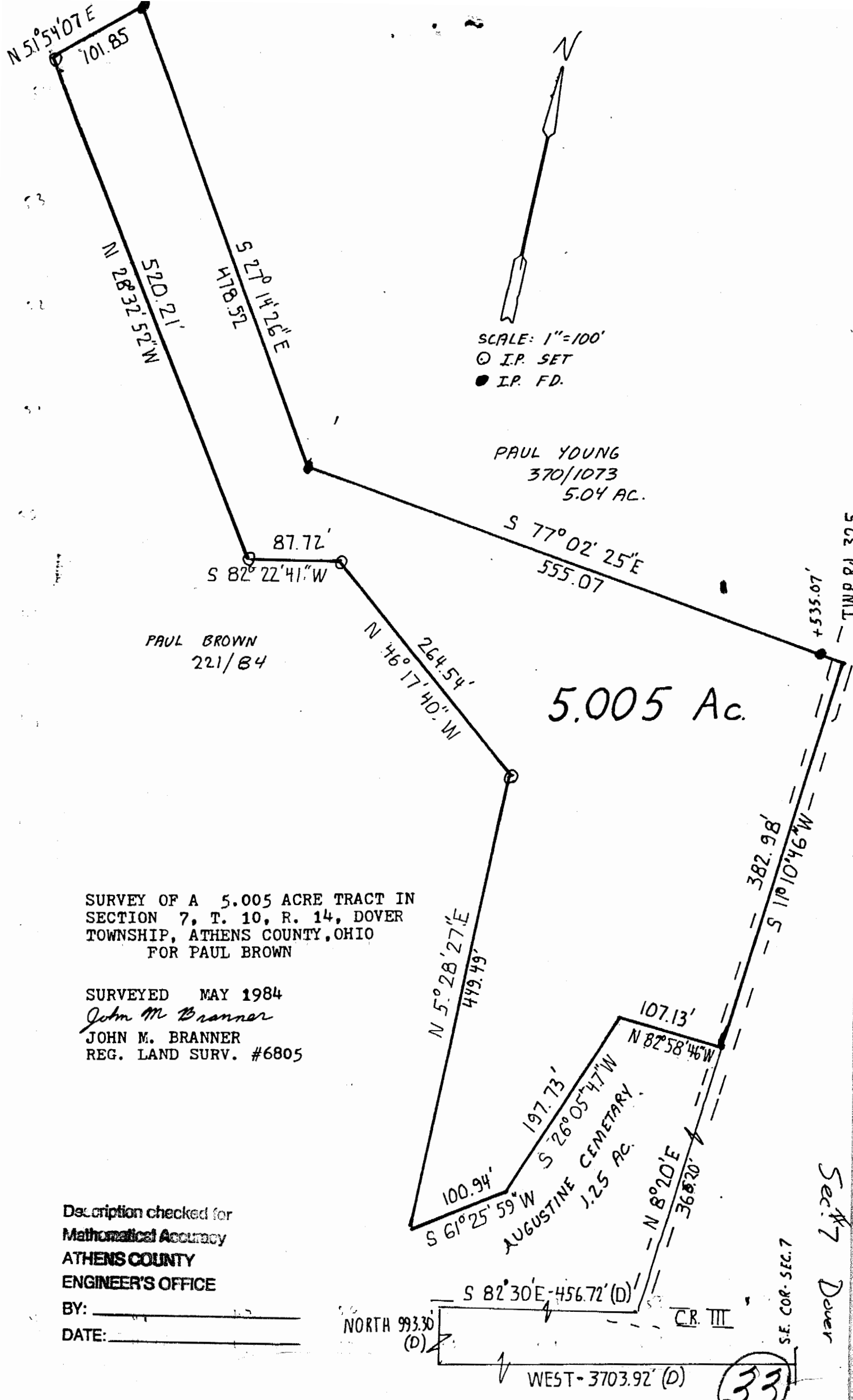
Subject to all easements and rights of way of record.

  
John M. Branner  
Registered Land Surveyor 6805

Description checked for  
Mathematical Accuracy  
ATHENS COUNTY  
ENGINEER'S OFFICE

BY:   
DATE: 6-4-84

32



N 51°54'07"E  
101.85

N 28°32'52"W  
520.21'

S 27°14'26"E  
478.52

SCALE: 1"=100'  
⊙ I.P. SET  
● I.P. FD.

PAUL YOUNG  
370/1073  
5.04 AC.

87.72'  
S 82°22'41"W

S 77°02'25"E  
555.07

PAUL BROWN  
221/84

N 46°17'40"W  
264.54'

5.005 Ac.

+535.07'

SURVEY OF A 5.005 ACRE TRACT IN  
SECTION 7, T. 10, R. 14, DOVER  
TOWNSHIP, ATHENS COUNTY, OHIO  
FOR PAUL BROWN

SURVEYED MAY 1984  
*John M. Branner*  
JOHN M. BRANNER  
REG. LAND SURV. #6805

Description checked for  
Mathematical Accuracy  
ATHENS COUNTY  
ENGINEER'S OFFICE  
BY: \_\_\_\_\_  
DATE: \_\_\_\_\_

107.13'  
N 82°58'46"W  
197.73'  
S 26°05'47"W  
100.94'  
S 61°25'59"W  
449.49'  
N 5°28'27"E  
360.20'  
N 8°20'E  
456.72' (D)  
S 82°30'E

SE. COR. SEC. 7

Section 7  
Dover

33