

DESCRIPTION OF A 5.072 ACRE TRACT

Situated in Section 7, T.10, R.14, Dover Township, Athens County, Ohio and being a part of a tract of land described in Volume 221, Page 84, Athens County Deed Records and being more particularly described as follows:

Commencing at the Southwest corner of Section 7, thence, East, 18.5 chains (deed) to a point; thence, North 15.5 chains (deed) to a point; thence, N 85°57'W, 84.43' (deed) to a point at the Southeast corner of a 2.05 acre tract, said point being the point of beginning for the tract of land herein described:

Thence, along the East line of said 2.05 acre tract N 37°22'W, 31.45' to an iron pin found at the Southeast corner of a 3.136 acre tract; thence, along the lines of said 3.136 acre tract N 21°34'14"W, 275.93' to an iron pin; thence, N 6°29'45"W, 199.25' to an iron pin found; thence, N 2°58'48"W, 245.62' to an iron pin at the Northeast corner of the 3.136 acre tract; thence, along random lines: N 3°59'36"E, 99.23' to an iron pin set; thence, S 54°45'34"E, 583.49' to an iron pin set; thence, S 33°27'58"W, 366.69' to an iron pin set; thence, S 7°11'40"E, 193.40' to a point in Athens County 111, passing an iron pin set at 168.40'; thence, along said road N 85°57'W, 150.00' to the point of beginning and containing 5.072 acres.

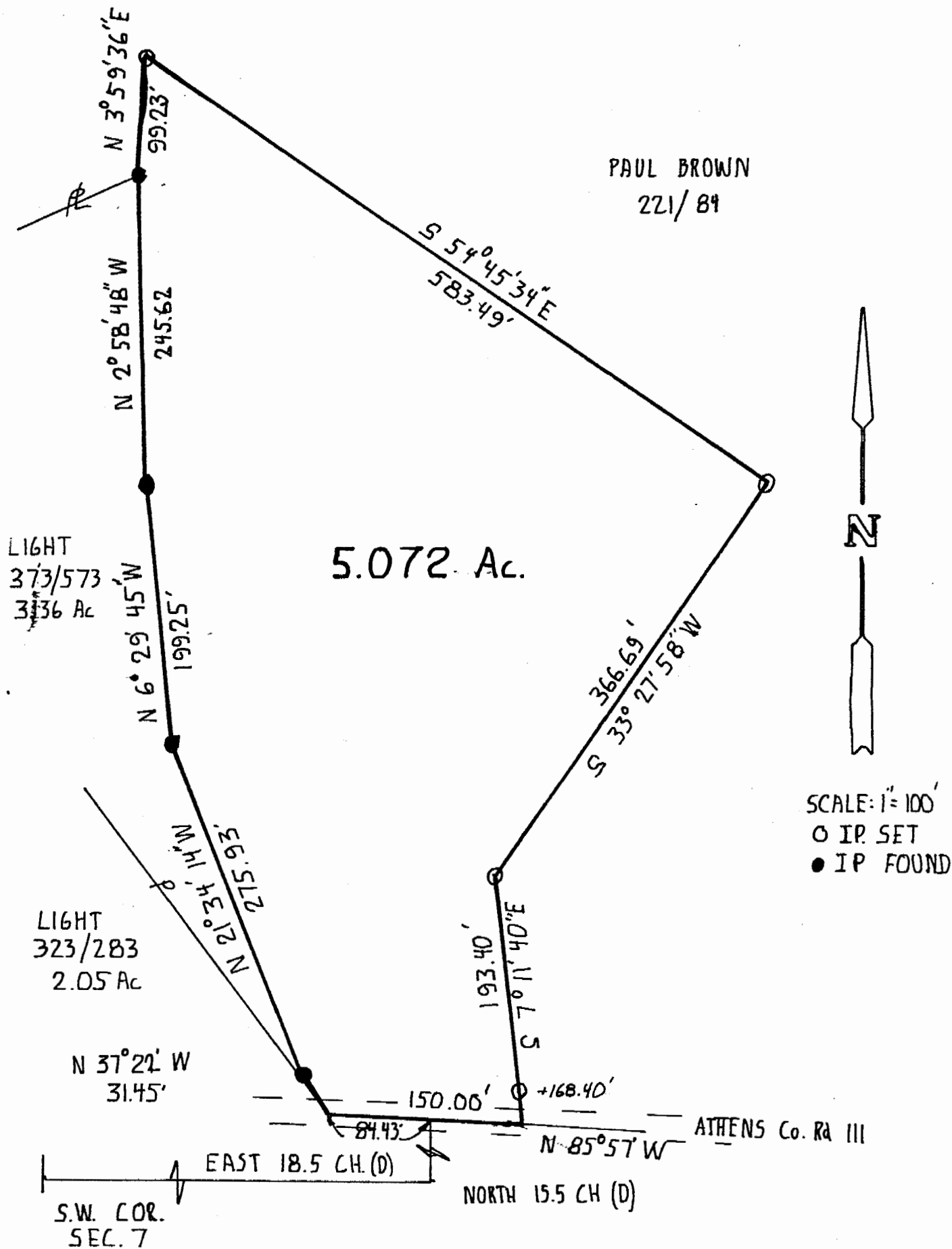
Subject to all easements and rights of way of record

John M. Branner  
John M. Branner  
Registered Land Surv. #6805

Description checked for  
Mathematical Accuracy  
ATHENS COUNTY  
ENGINEER'S OFFICE

BY: Charles W. Stutz  
DATE: 6-4-84

34



SURVEY OF A 5.072 ACRE TRACT  
IN SECTION 7, T.10, R.14,  
DOVER TOWNSHIP, ATHENS COUNTY  
OHIO-----FOR PAUL BROWN

SURVEYED MAY 1984  
*John M Branner*

JOHN M. BRANNER- R.L.S.# 6805

Description checked for  
Mathematical Accuracy  
ATHENS COUNTY  
ENGINEER'S OFFICE

BY: *Aubrey W. Stott*  
DATE: *6-4-84*

35

See #7  
Dover