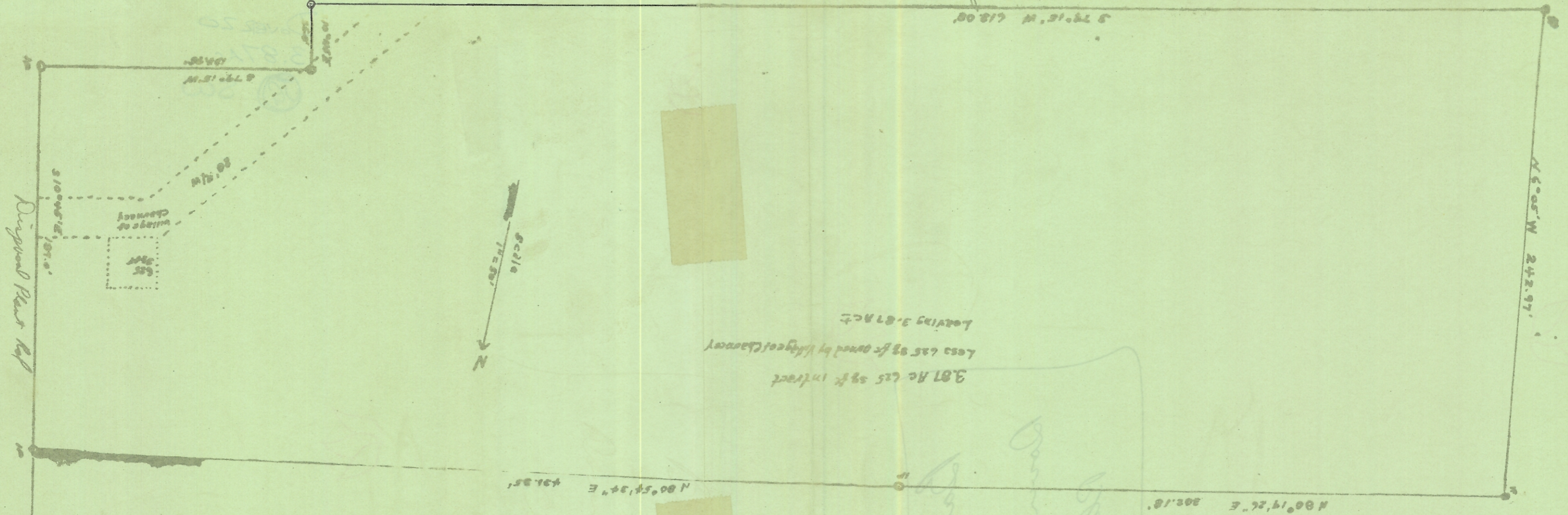


Part corner of Long Street  
NE corner of Long Street?

of a part of section 20 T. 14. N. R. 14. W. over top  
Athens County Ohio, in and adjoining the  
Village of Chauncey, showing additional  
Land for sewer & water plant.  
Surveyed 11-20-1978  
By Joe L. Robinson  
Reg. Sur 1284



Part known road

Handwritten notes in cursive script, including 'Dingwood Place Rd' and other illegible text.

St. Clair St

K&M R.R.

Dingwood Place Rd

3100± E 411±

125±

200±

625

Village of Chauncey

50±

618.00

79° 15' W

Scale  
1 inch = 500 feet

3.81 Ac less 59 ft tract

Less 625 sq ft owned by Village of Chauncey

leaving 3.81 Ac ±

N 60° 14' 26" E 202.18'

N 60° 05' W 242.97'

S 79° 15' W 618.00'