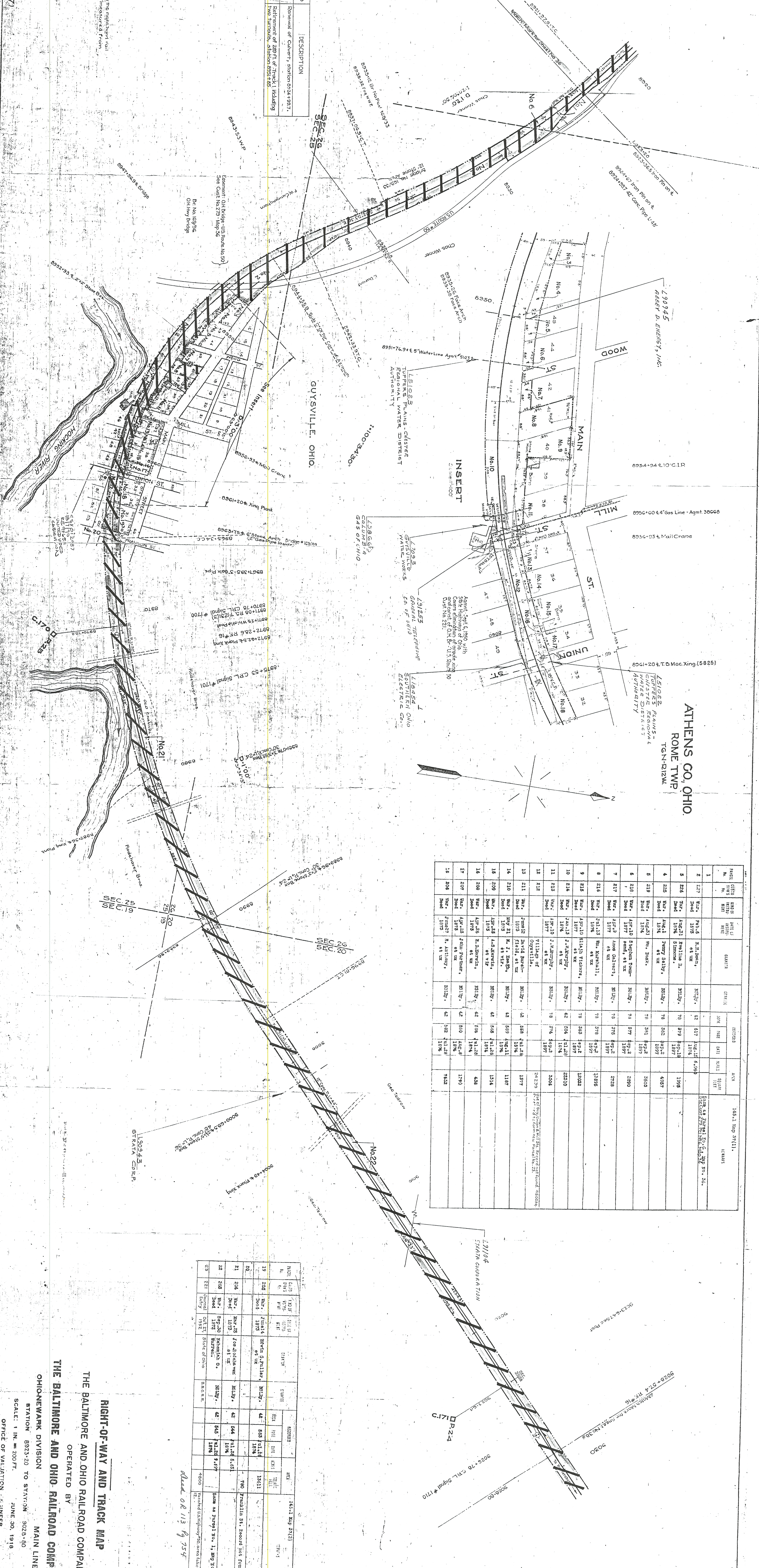


FOH-4511 (37)

All drawings and data of this right-of-way and all distances shown herein are based on the original survey of the right-of-way and are not to be construed as a warranty of any kind.

AUTHORITY	DATE INSTALLED OR REFERRED	DESCRIPTION
C-20735	Completed April 10, 1928	Removal of culvert station 6224+19.7.
C-22448	Revised Nov. 8, 1928	Relocation of station of bridge including new structure, station 6224+19.7.
A-171482	Nov. 8, 1928	Removal of station of bridge including new structure, station 6224+19.7.



STATION	DATE	BY	DESCRIPTION	REMARKS
6200	1928	W.H. Smith	Established station	
6201	1928	W.H. Smith	Established station	
6202	1928	W.H. Smith	Established station	
6203	1928	W.H. Smith	Established station	
6204	1928	W.H. Smith	Established station	
6205	1928	W.H. Smith	Established station	
6206	1928	W.H. Smith	Established station	
6207	1928	W.H. Smith	Established station	
6208	1928	W.H. Smith	Established station	
6209	1928	W.H. Smith	Established station	
6210	1928	W.H. Smith	Established station	
6211	1928	W.H. Smith	Established station	
6212	1928	W.H. Smith	Established station	
6213	1928	W.H. Smith	Established station	
6214	1928	W.H. Smith	Established station	
6215	1928	W.H. Smith	Established station	
6216	1928	W.H. Smith	Established station	
6217	1928	W.H. Smith	Established station	
6218	1928	W.H. Smith	Established station	
6219	1928	W.H. Smith	Established station	
6220	1928	W.H. Smith	Established station	
6221	1928	W.H. Smith	Established station	
6222	1928	W.H. Smith	Established station	
6223	1928	W.H. Smith	Established station	
6224	1928	W.H. Smith	Established station	
6225	1928	W.H. Smith	Established station	
6226	1928	W.H. Smith	Established station	
6227	1928	W.H. Smith	Established station	
6228	1928	W.H. Smith	Established station	
6229	1928	W.H. Smith	Established station	
6230	1928	W.H. Smith	Established station	

STATION	DATE	BY	DESCRIPTION	REMARKS
6200	1928	W.H. Smith	Established station	
6201	1928	W.H. Smith	Established station	
6202	1928	W.H. Smith	Established station	
6203	1928	W.H. Smith	Established station	
6204	1928	W.H. Smith	Established station	
6205	1928	W.H. Smith	Established station	
6206	1928	W.H. Smith	Established station	
6207	1928	W.H. Smith	Established station	
6208	1928	W.H. Smith	Established station	
6209	1928	W.H. Smith	Established station	
6210	1928	W.H. Smith	Established station	
6211	1928	W.H. Smith	Established station	
6212	1928	W.H. Smith	Established station	
6213	1928	W.H. Smith	Established station	
6214	1928	W.H. Smith	Established station	
6215	1928	W.H. Smith	Established station	
6216	1928	W.H. Smith	Established station	
6217	1928	W.H. Smith	Established station	
6218	1928	W.H. Smith	Established station	
6219	1928	W.H. Smith	Established station	
6220	1928	W.H. Smith	Established station	
6221	1928	W.H. Smith	Established station	
6222	1928	W.H. Smith	Established station	
6223	1928	W.H. Smith	Established station	
6224	1928	W.H. Smith	Established station	
6225	1928	W.H. Smith	Established station	
6226	1928	W.H. Smith	Established station	
6227	1928	W.H. Smith	Established station	
6228	1928	W.H. Smith	Established station	
6229	1928	W.H. Smith	Established station	
6230	1928	W.H. Smith	Established station	

ATHENS CO., OHIO  
ROME TWP  
T.C.M.-122M

RIGHT-OF-WAY AND TRACK MAP  
THE BALTIMORE AND OHIO RAILROAD COMPANY  
OPERATED BY  
THE BALTIMORE AND OHIO RAILROAD COMPANY  
OHIOEWAARK DIVISION  
STATION 6223+20 TO STATION 6229+60  
SCALE: 1 IN. = 200 FT.  
OFFICE OF VALUATION, ENGINEER  
BALTIMORE, MD.  
JUNE 30, 1918