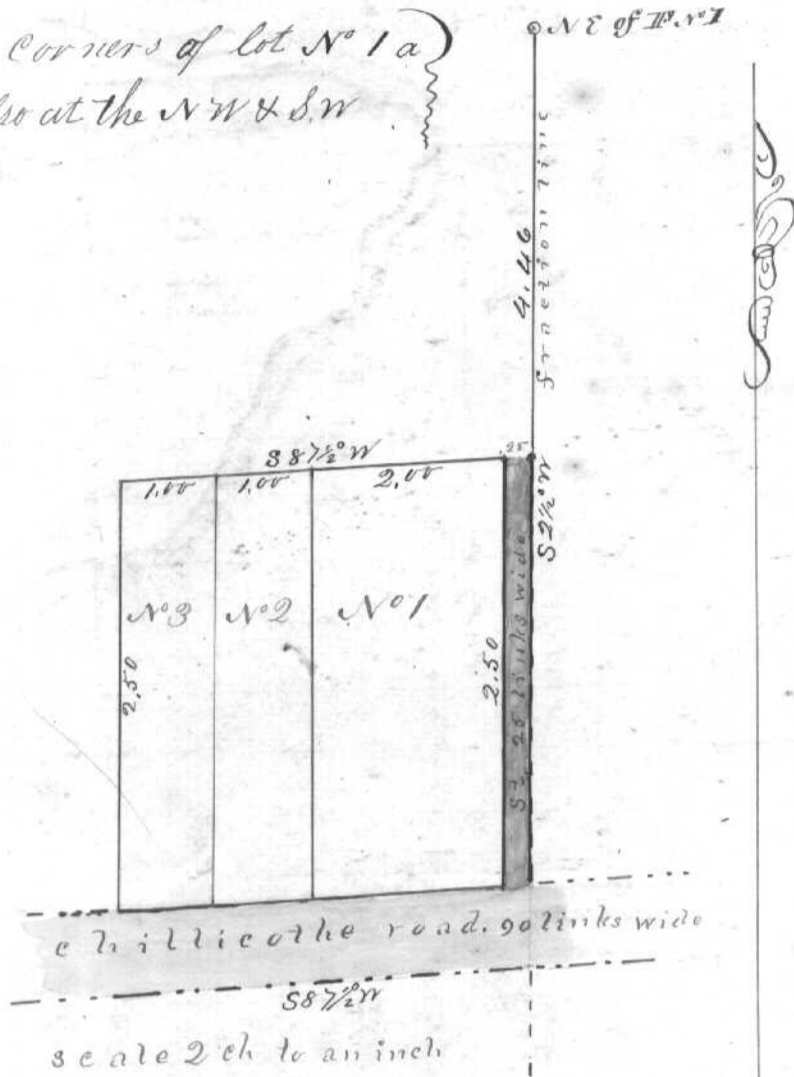


N^o 489 Plat & Notes of James Mayhugh's Addition to the village of Marshfield. situated in the East side of FRACTION N^o 1. T N^o 11. R 15. W. C. T. P.

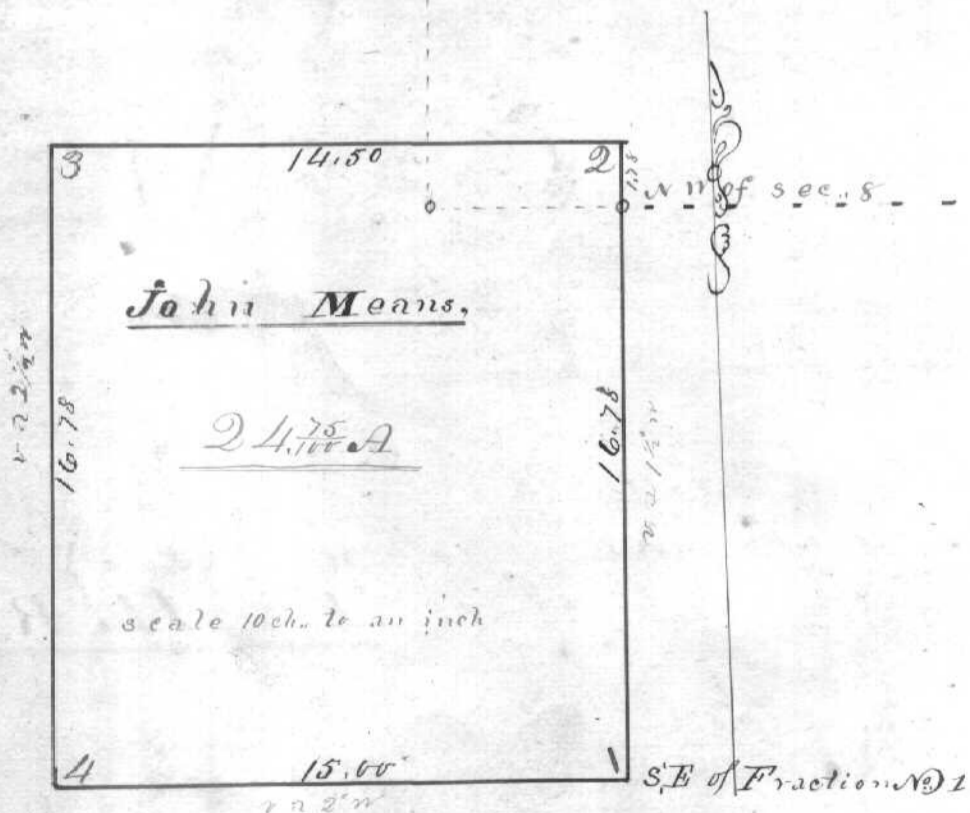
Cut the N.E & S.E corners of lot N^o 1 a Stone is set & also at the N.W & S.W corners of lot N^o 3



Surveyed March 23rd 1860
Recorded January 11th 1861

James Coulson C.S.A.C

N^o 490 Plat & notes of a Lot of land Situated in Fractions N^o 1 & 2 in T N^o 11. R N^o 15. W. C. T. P.



- Witness trees.
- 1 White oak 21 - N 88 E 8 Links
 - 1 Gum 12 S 46 W 21
 - 2 Stone corner
 - 2 No witness trees
 - 3 Stone corner
 - 3 No witness trees
 - 4 Stone corner
 - 4 No witness trees

Surveyed March 27th 1860 &
Recorded Jan^{ry} 16th - 1861

James Coulson C.S.A.C