

Description Checked for
Mathematical Accuracy
Athens County
ENGINEER'S OFFICE
BY: S. Blaus
DATE: 12-3-09

C. Thomas Smith

Ohio Professional Surveyor No. 6844

P.O. Box 393

Racine, Ohio 45771

740-949-2524

Description of survey for Diane Spezza

Being a 2.715 acre tract of land transferred to Homesales Inc. of Delaware as recorded in Official Records Volume 436 at page 867 Athens County Recorder's Office, Athens County, Ohio, also being a part of Section 35, Township-4, Range-13, Lodi Township, Athens County, State of Ohio and more particularly described as follows;

Beginning at an existing 1/2" iron pin found being the northeast corner of said 2.715 acre tract which is assumed to bear South 89°52'17" West a distance of 1818.97 feet and South 00°07'43" East a distance of 2302.92 feet from the northeast corner of said Section 35, T-4, R-13;

Thence along the east line of said 2.715 acre tract and the west line of an 18.90 acre tract transferred to Alexander Couladis as recorded in Official Records Volume 299 at page 149 South 55°08'53" West passing thru an existing 5/8" iron pin at a distance of 299.15 feet and going a total distance of 324.27 feet to a point in the centerline of Old US Route 33;

Thence leaving said east line and along said centerline the following two courses;

1. North 42°10'58" West a distance of 161.66 feet to a point;
2. North 45°58'19" West a distance of 165.48 feet to a point being the southwest corner of said 2.715 acre tract;

Thence leaving said centerline and along the west line of said 2.715 acre tract and the east line of a 147.47 acre tract transferred to Alexander Couladis as recorded in Official Records Volume 348 at page 284 North 39°20'54" East passing thru a 5/8" iron pin set at a distance of 20.83 feet and going a total distance of 286.67 feet to an existing 3/4" iron pin being the northwest corner of said 2.715 acre tract;

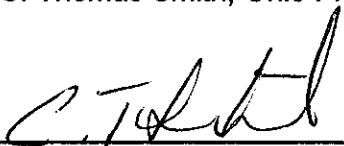
Thence leaving said west line and along the north line of said 2.715 acre tract and being the south line of said 18.90 acre tract recorded in Official Records Volume 299 at page 149 the following two courses;

1. South 58°20'54" East passing thru a 5/8" iron pin set at a distance of 224.28 feet and going a total distance of 227.72 feet to a 30" walnut tree;
2. South 37°53'17" East a distance of 192.19 feet to the principal point of beginning containing 2.7158 acres more or less subject to all legal easements and rights of way.

Bearings are assumed and are for the determination of angles only.

All iron pins set are 5/8"X30" rebar with plastic ID cap stamped "CTS-6844".

The above description was prepared from an actual survey made on the 15th day of October, 2009, by C. Thomas Smith, Ohio Professional Surveyor, No. 6844.

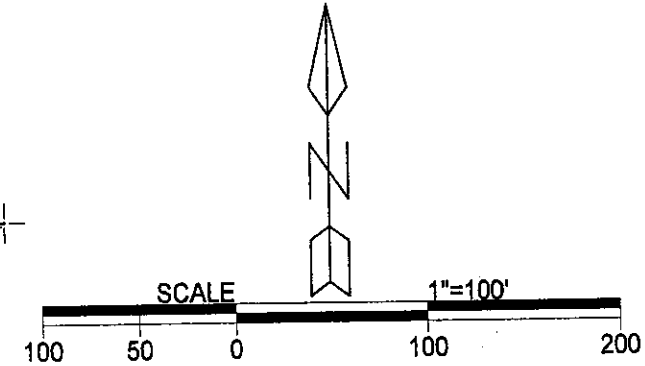
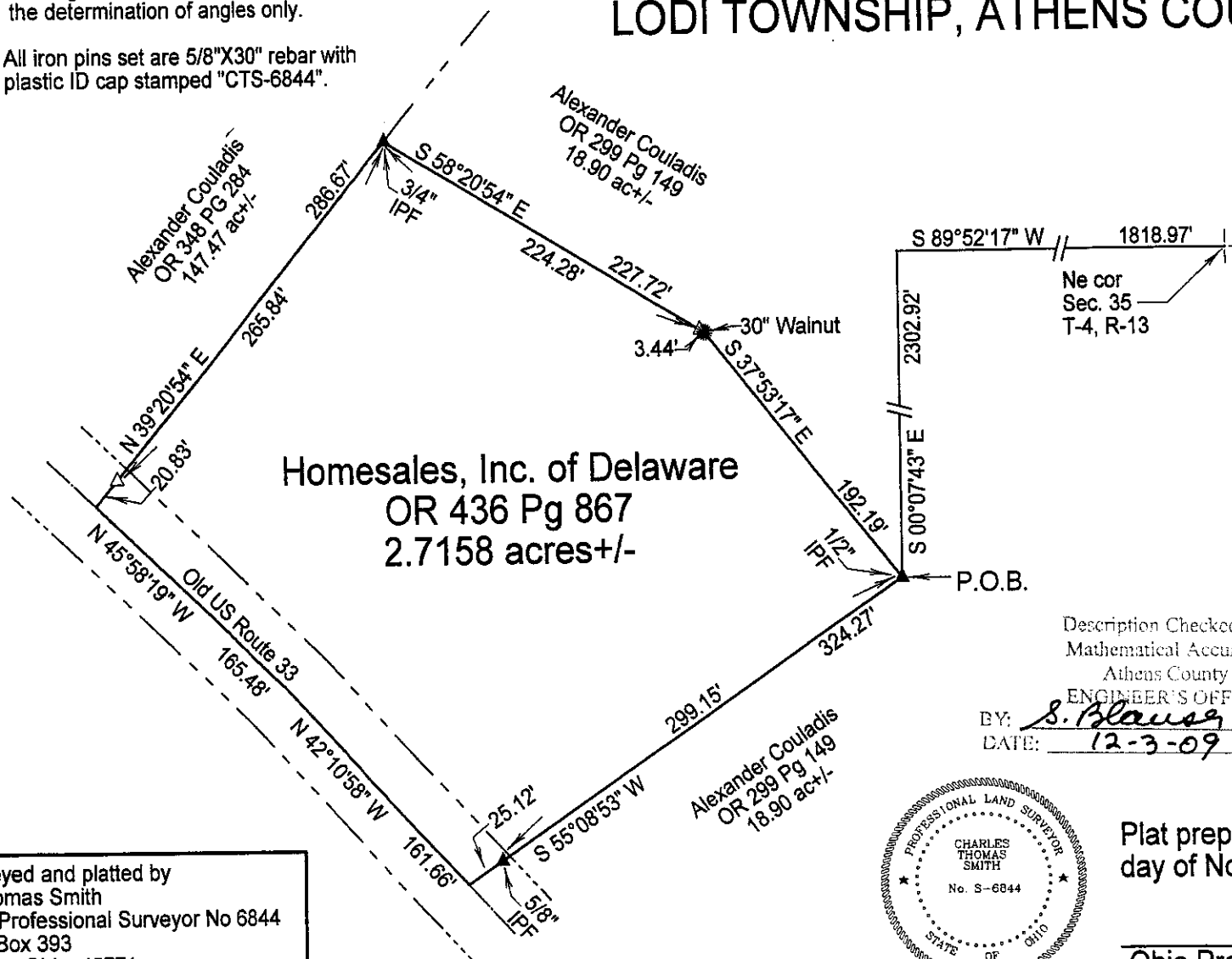

Ohio Professional Surveyor No. 6844



BEING A PART OF SECTION 35, TOWNSHIP-4, RANGE-13,
LODI TOWNSHIP, ATHENS COUNTY, STATE OF OHIO.

Note: Bearings are assumed and are for the determination of angles only.

All iron pins set are 5/8"X30" rebar with plastic ID cap stamped "CTS-6844".

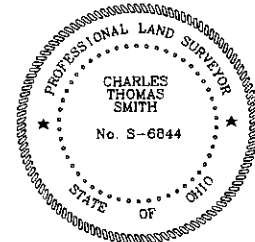


LEGEND

△	Iron pin set
▲	Iron pin found
•	Point
☼	Tree

REFERENCES
Current Tax Plats
Previous surveys
Deeds: as noted

Description Checked for
Mathematical Accuracy
Athens County
ENGINEER'S OFFICE
BY: S. Blausg
DATE: 12-3-09



Plat prepared from an actual survey made on the 28th day of November, 2009 by,

C. T. Smith
Ohio Professional Surveyor No. 6844

Surveyed and platted by
C. Thomas Smith
Ohio Professional Surveyor No 6844
P.O. Box 393
Racine, Ohio 45771
740-949-2524