

- ▲ = Railroad Spike Found
- ▲ = Railroad Spike Set
- = Iron Pin Found
- = Iron Pin Set
- = Stone Found
- = Monument Found

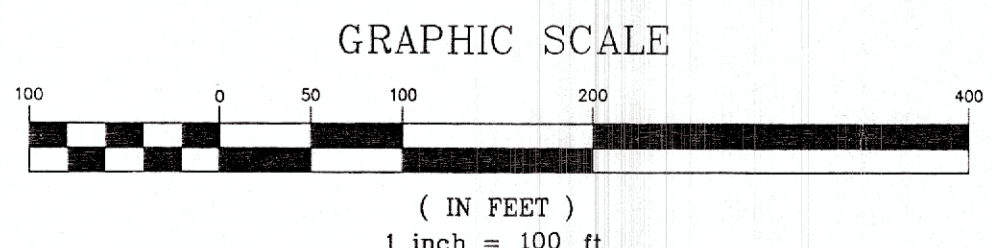
LINE TABLE		
LINE	BEARING	LENGTH
L1	N24°45'14"W	119.66'
L2	N84°16'31"W	65.00'

Plat of Survey of 3 Tracts
 Situated in Section 12, Town 10,
 Range 15, Lee Township,
 Athens County, Ohio
 Surveyed January, 2000 for:
 Paul Kostival

Gregory K. Wright
 Gregory K. Wright

ok. to transfer per Atlas Copy-
 Co Health Dept. 12.169 acres
 Charles C. Hauer, R.S.

Description checked for
 Mathematical Accuracy
 ATHENS COUNTY
 ENGINEERS OFFICE
 BY: *S. Klausner*
 DATE: *1-25-2000*

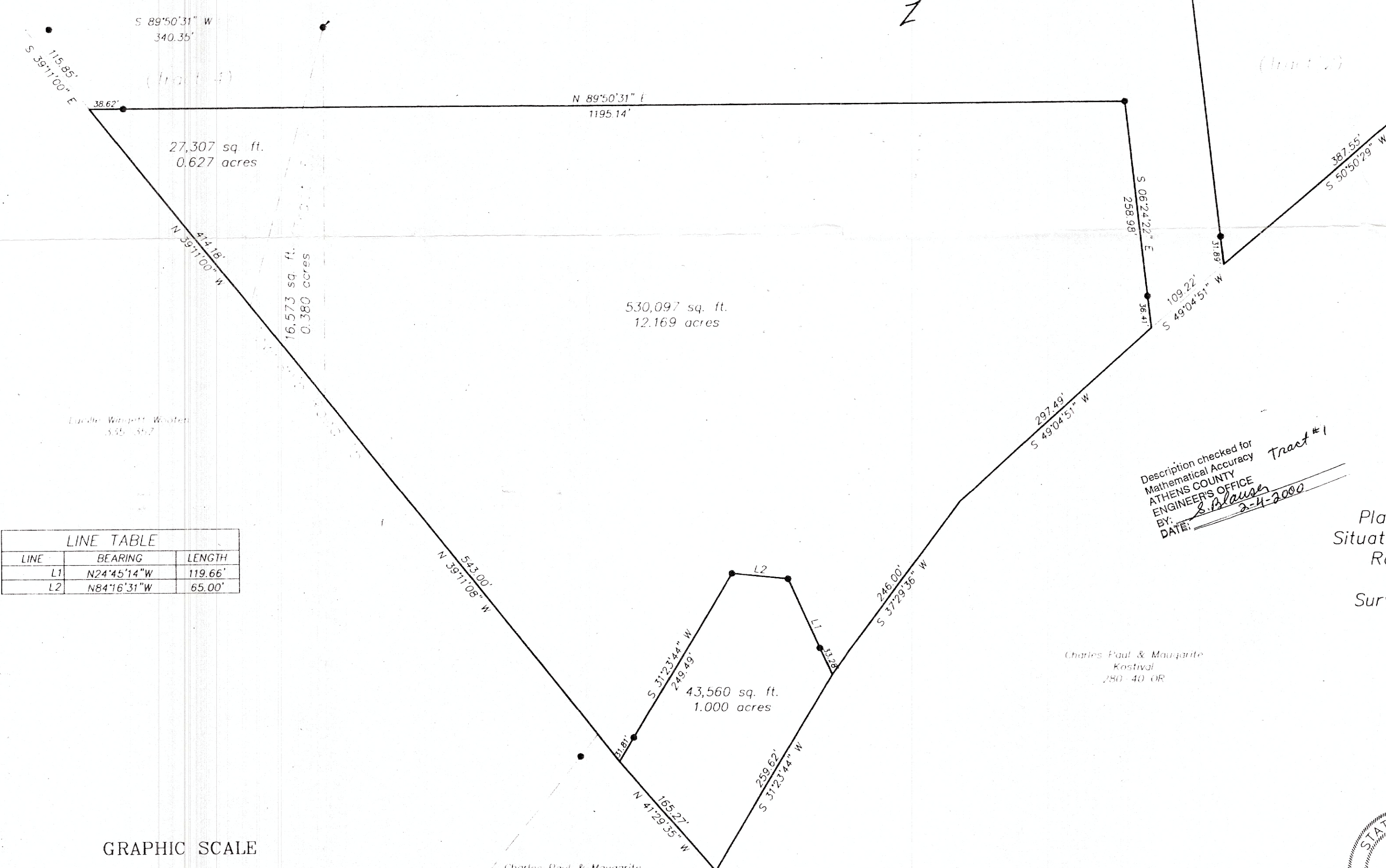
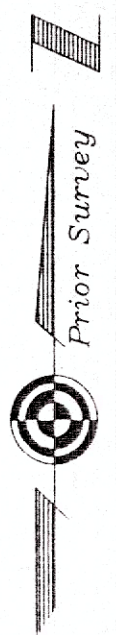


LEE-12
 5.0042
 12.169
 1.0042
 0.627
 1



Gregory K. Wright
 Professional Engineer
 Professional Surveyor

11684 Channingway Blvd
 The Plains, Ohio 45780
 740-797-4142
 FAX 740-797-8623



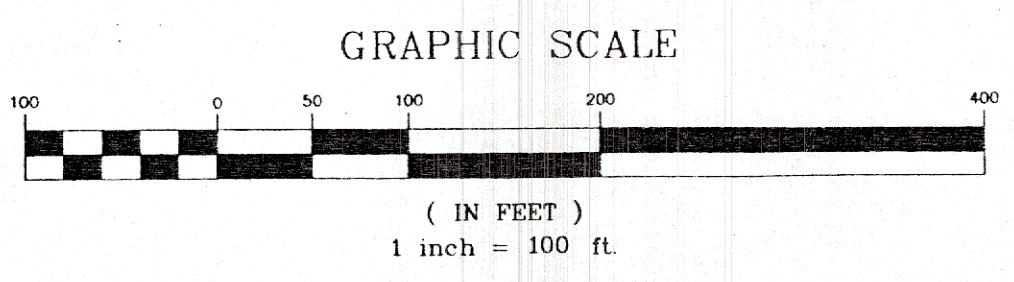
- ▲ = Railroad Spike Found
- ▲ = Railroad Spike Set
- = Iron Pin Found
- = Iron Pin Set
- = Stone Found
- = Monument Found

Description checked for
Mathematical Accuracy
ATHENS COUNTY
ENGINEERS OFFICE
BY: S. Blaylock
DATE: 2-4-2000 Tract #1

Plat of Survey of 3 Tracts
Sited in Section 12, Town 10,
Range 15, Lee Township,
Athens County, Ohio
Surveyed January, 2000 for:
Paul Kostival

Gregory K. Wright
Gregory K. Wright

LINE TABLE		
LINE	BEARING	LENGTH
L1	N24°45'14"W	119.66'
L2	N84°16'31"W	65.00'



Gregory K. Wright
Professional Engineer
Professional Surveyor
11684 Channingway Blvd
The Plains, Ohio 45780
740-797-4142
FAX 740-797-8623