

Legal Description Pre-Approval
APPROVED
All transfers are subject to
Athens County Conveyance Standards

FEB 03 2015

Jill Thompson
Athens County Auditor

Description Checked for
Mathematical Accuracy
Athens County
ENGINEER'S OFFICE
BY: Peranda Wilton
DATE: 2/2/15

DESCRIPTION OF A 67.668 ACRE TRACT

Being a part of the tract of land that is now or formerly in the name of Robert & Linda Clark as recorded in Official Records 116 at page 479, Athens County Recorder's Office, said tract being part of Fraction 12 in Section 9 and part of Fraction 6 in Section 15, T 10 N, R 15 W, Lee Township, Athens County, State of Ohio and being particularly described as follows:

Beginning at the southeast corner of Section 16, the northeast corner of Fractional Lot 6 and a grantor's line;

Thence along the east line of Fractional Lot 6 and the west-line of Gogel (348-1684 O.R.) :
South 01 degrees 24 minutes 42 seconds West a distance of 126.74 feet to a 5/8 inch X 30 inch iron pin with a plastic identification cap set on a grantor's corner;

Thence, along the South lines of Gogel (348-1684 O.R.) and Gaither (451-2174 O.R.): South 88 degrees 36 minutes 11 seconds East a distance of 1118.57 feet to a 5/8 X 30" iron pin with a plastic identification cap set;

Thence, along the west-line of Elliot (458-1031 O.R.)

South 01 degrees 16 minutes 34 seconds West a distance of 1105.50 feet to an iron pin found on the grantor's southeasterly corner;

Thence along grantor's line south line, and the North-lines of King (235-259 O.R.) and Gambill (277-1175 O.R.):

North 86 degrees 56 minutes 57 seconds West a distance of 2596.37 feet to an iron pin found on the grantor's southwesterly corner;

Thence along the East-line of West (445-1755 O.R.):

North 01 degrees 24 minutes 20 seconds East a distance of 1144.12 feet to a 5/8 X 30 inch pin with a plastic identification cap set on the north line of Fraction 6;

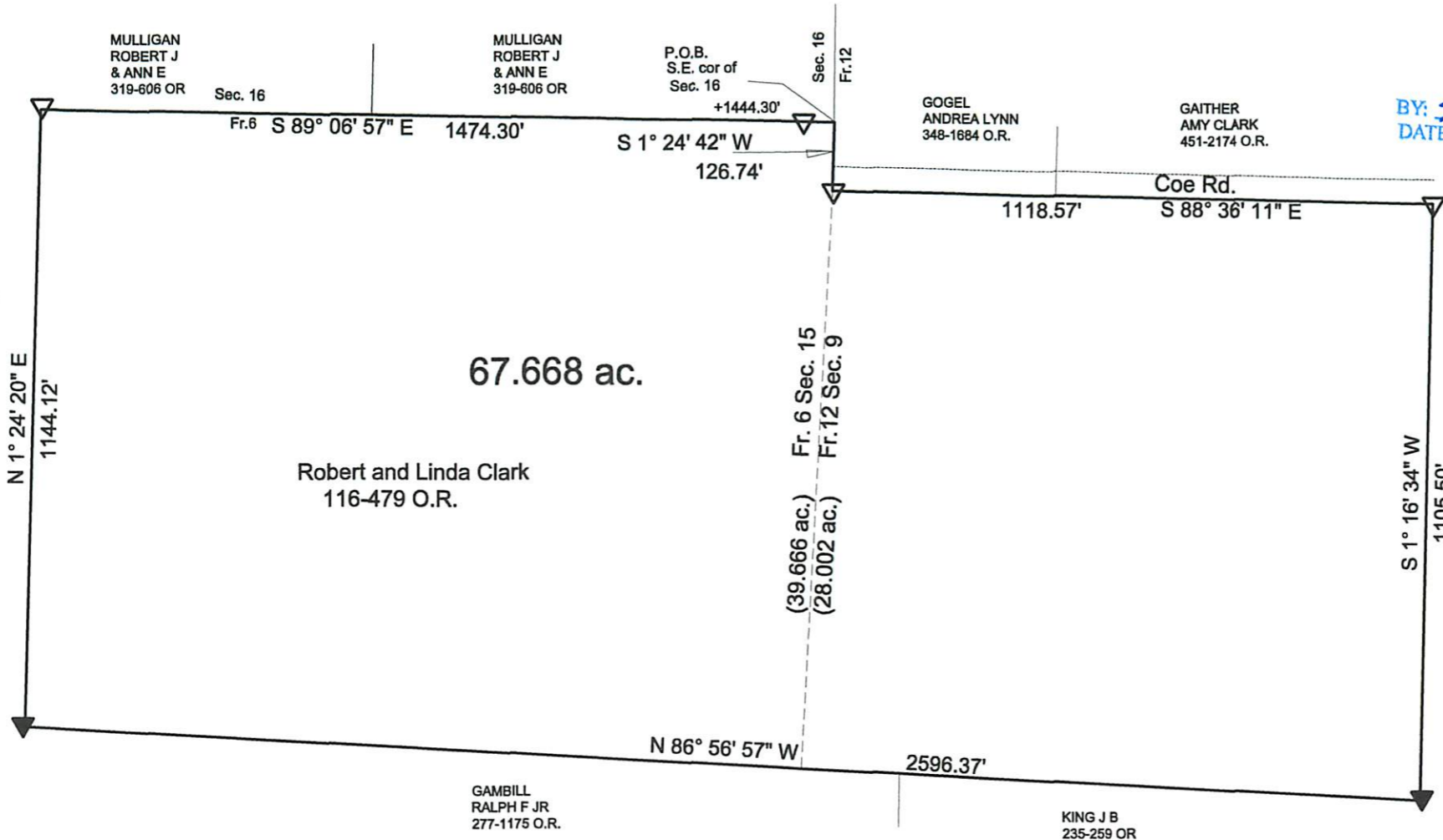
Thence along the north line of Fraction 6, and the South-lines of Mulligan (319-808 O.R.)

South 89 degrees 06 minutes 57 seconds East, passing through 5/8 inch rebar set at 1444.30 feet, going a total distance of 1474.30 feet to the point of beginning, containing 39.666 acres in Fractional Lot 6, Section 15 and 28.002 acres in Fractional Lot 12, Section 9, for a total of 67.668 acres, more or less, and subject to the right-of-way of Coe Road and all easements of record.

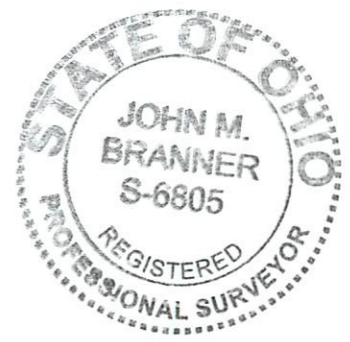
All 5/8 X 30 " iron pins with plastic identification caps set are stamped "Seymour & Associated".
The bearings used in the above described tract were assumed and are for the determination of angles only.

The above described tract was surveyed by George F. Seymour, Ohio Professional No. 6044, March 31, 1998, and the description prepared by John M. Branner P.S. 6805 in which the current adjoiners were added to the Seymour original description.





Description Checked for
Mathematical Accuracy
Athens County
ENGINEER'S OFFICE
BY: *Branner Branner*
DATE: *2/2/15*



Plat of Description of a 67.668 Acre Tract
in Fraction 6 and Fraction 12 in Sections 9 & 15
of T. 10, R. 15 Lee Twp., Athens County, Ohio
Based on survey and plat by George Seymour P.S. 6044
(deceased) that he completed in March 1998

Prepared By:
John M. Branner
John M. Branner P.S. 6805
62 East First Street, The Plains, Oh. 45780

Note: This map is based
entirely on the Seymour
Map and not field checked by me
the purpose of this map is to
add current adjoiners to
adhere to current Auditor's
Standards



Scale 1 inch = 300 feet
▼ = iron pin found by Seymour
▽ = iron pin set by Seymour
Assumed bearings used to denote interior angles only

