



C. Thomas Smith & Associates
P.O. Box 393
Racine, Ohio 45771
740-949-2524

DESCRIPTION OF SURVEY FOR RICHARD AKERS

BEING A PART OF A TRACT OF LAND TRANSFERRED TO EARL AKERS AS RECORDED IN DEED BOOK 362 AT PAGE 415, ATHENS COUNTY RECORDER'S OFFICE, ATHENS COUNTY OHIO, ALSO BEING A PART OF SECTION 16, TOWNSHIP-10-NORTH, RANGE-15-WEST, LEE TOWNSHIP, ATHENS COUNTY, STATE OF OHIO AND MORE PARTICULARLY DESCRIBED AS FOLLOWS:

BEGINNING AT A 5/8" IRON PIN WITH I.D. CAP SET WHICH BEARS NORTH 83 DEG 39'49"EAST A DISTANCE OF 1013.83 FEET AND NORTH 05 DEG 24'48"WEST A DISTANCE OF 1050.14 FEET FROM THE ASSUMED SOUTHWEST CORNER OF SAID SECTION 16, TOWNSHIP-10, RANGE-15;

THENCE NORTH 37 DEG 58'44"EAST A DISTANCE OF 83.50 FEET TO A 5/8" IRON PIN WITH I.D. CAP SET;

THENCE NORTH 64 DEG 59'44"EAST A DISTANCE OF 892.98 FEET TO A 5/8" IRON PIN WITH I.D. CAP SET;

THENCE NORTH 64 DEG 30'44"EAST A DISTANCE OF 405.18 FEET TO A 5/8" IRON PIN WITH I.D. CAP SET;

THENCE NORTH 74 DEG 16'44"EAST A DISTANCE OF 375.10 FEET TO A 5/8" IRON PIN WITH I.D. CAP SET;

THENCE NORTH 23 DEG 13'44"EAST A DISTANCE OF 132.00 FEET TO A 5/8" IRON PIN WITH I.D. CAP SET;

THENCE SOUTH 66 DEG 31'16"EAST A DISTANCE OF 198.00 FEET TO A 5/8" IRON PIN WITH I.D. CAP SET;

THENCE NORTH 61 DEG 06'28"EAST A DISTANCE OF 170.46 FEET TO A P.K. NAIL SET IN THE CENTER LINE OF COUNTY ROAD 10, BAKER ROAD;

THENCE ALONG SAID CENTERLINE THE FOLLOWING NINE COURSES:

1. SOUTH 39 DEG 22'33"WEST A DISTANCE OF 72.07 FEET TO A POINT;
2. SOUTH 26 DEG 52'13"WEST A DISTANCE OF 70.30 FEET TO A POINT;
3. SOUTH 15 DEG 55'19"WEST A DISTANCE OF 90.25 FEET TO A POINT;
4. SOUTH 03 DEG 30'26"WEST A DISTANCE OF 146.41 FEET TO A POINT;
5. SOUTH 03 DEG 12'01"EAST A DISTANCE OF 169.93 FEET TO A POINT;
6. SOUTH 10 DEG 33'02"WEST A DISTANCE OF 96.46 FEET TO A POINT;
7. SOUTH 29 DEG 47'32"WEST A DISTANCE OF 111.91 FEET TO A POINT;
8. SOUTH 35 DEG 08'27"WEST A DISTANCE OF 204.17 FEET TO A POINT;
9. SOUTH 34 DEG 13'48"WEST A DISTANCE OF 207.49 FEET TO A POINT;

THENCE LEAVING SAID CENTERLINE NORTH 69 DEG 05'08"WEST PASSING THROUGH A 5/8" IRON PIN WITH I.D. CAP SET AT A DISTANCE OF 30.00 FEET AND GOING A TOTAL DISTANCE OF 847.01 FEET TO A 5/8" IRON PIN WITH I.D. CAP SET;

THENCE SOUTH 82 DEG 58'20"WEST A DISTANCE OF 775.79 FEET TO THE PRINCIPLE POINT OF BEGINNING CONTAINING 20.001 ACRES MORE OR LESS SUBJECT TO ALL LEGAL EASEMENTS AND RIGHTS OF WAY.

ALL IRON PINS ARE 5/8"X30" REBAR WITH PLASTIC I.D. CAP STAMPED "CTS-6844".

BEARING ARE ASSUMED AND ARE FOR THE DETERMINATION OF ANGLES ONLY.

THE ABOVE DESCRIPTION WAS PREPARED FORM AN ACTUAL SURVEY MADE ON THE 29TH DAY OF MAY, 2002 BY C. THOMAS SMITH, OHIO PROFESSIONAL SURVEYOR, #6844.

Description checked for
Mathematical Accuracy
ATHENS COUNTY
ENGINEER'S OFFICE
BY: S. Blawie
DATE: 6-14-02

C. Thomas Smith
C. THOMAS SMITH, P.S. #6844.

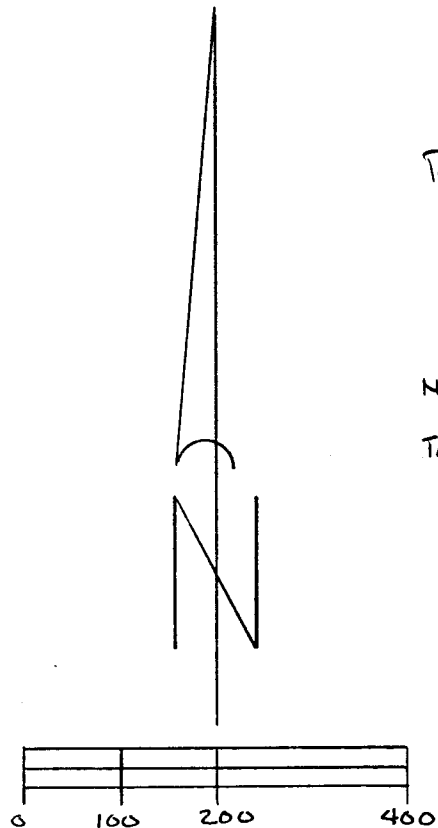
LEE #16

BEING A PART OF SECTION 16, TOWNSHIP-10-NORTH,
RANGE-15-WEST, LEE TOWNSHIP, ATHENS COUNTY, OHIO.

NOTE: BEARINGS ARE ASSUMED AND ARE FOR
THE DETERMINATION OF ANGLES ONLY.

REFERENCES

- CURRENT TAX PLATS
- PREVIOUS SURVEYS
- DEEDS: AS NOTED



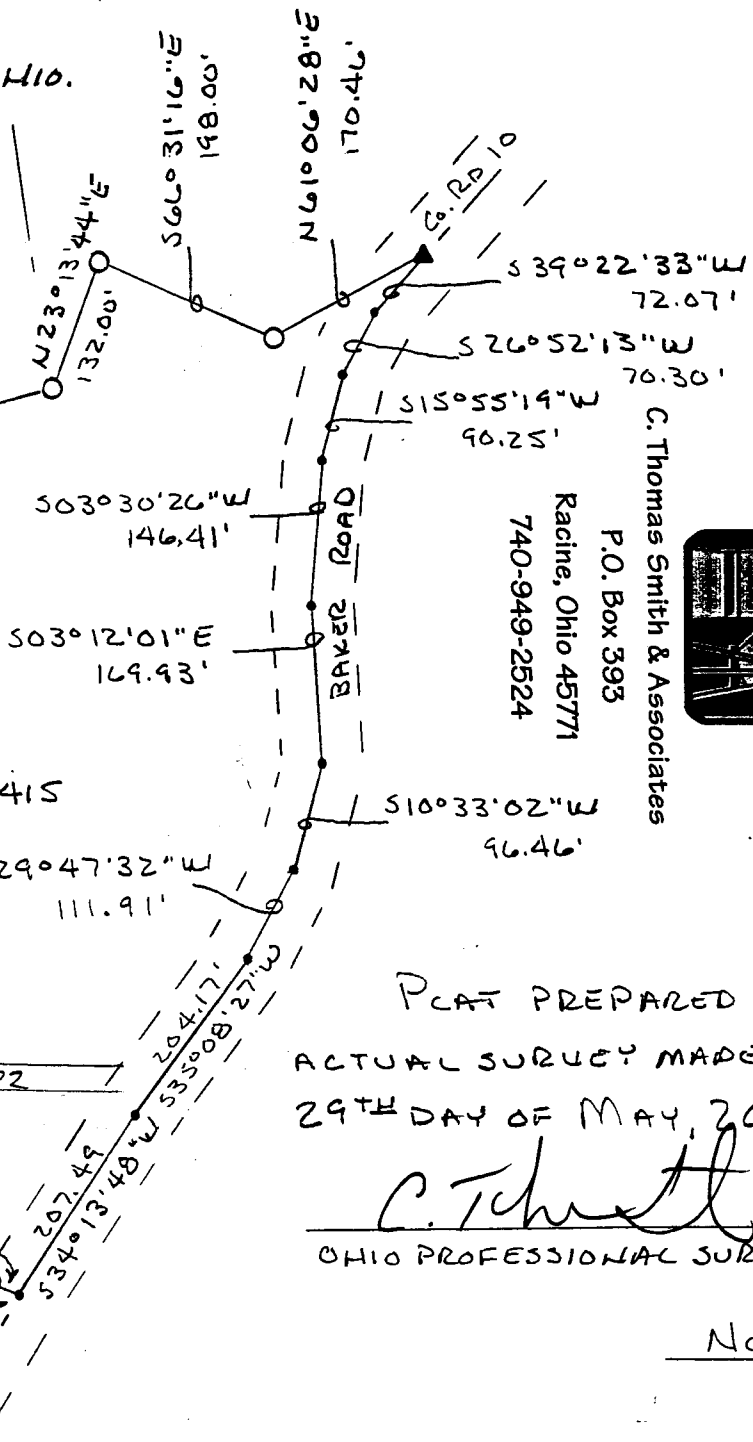
SARAH GUTHRIE
103-35, 37
N37°58'44"E
83.50'
SARAH GUTHRIE
103-35, 37
N64°59'44"E
83.50'
S82°58'20"W
1013.83 FT. AND N05°24'48"W
1050.14 FT. FROM THE ASSUMED
SW COR. SEC. 16, T-10, R-15

20.001 ACRES ±
EARL AKERS
268-332, 317-707, 360-771, 362-415

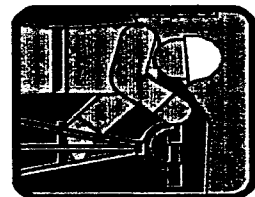
Description checked for
Mathematical Accuracy
ATHENS COUNTY
ENGINEER'S OFFICE
BY: S. Blausner
DATE: 6-14-02

LEGEND

- 5/8" X 30" IRON PIN
- O - WILD CAP CTS-LB44 SET
- ▲ - P.I.L. NAIL SET
- - POINT



C. Thomas Smith & Associates
P.O. Box 393
Racine, Ohio 45771
740-949-2524



PLAT PREPARED FROM AN
ACTUAL SURVEY MADE ON THE
29TH DAY OF MAY, 2002 BY,
C. Thomas Smith
OHIO PROFESSIONAL SURVEYOR

No. 6844