

**BRANNER SURVEYING**  
MEMBER-PROFESSIONAL LAND SURVEYORS OF OHIO

12500 N. PEACH RIDGE ROAD  
ATHENS, OHIO 45701

JOHN M. BRANNER  
Registered Land Surveyor

TELEPHONE  
(614) 592-5778

DESCRIPTION OF A 10.03 ACRE TRACT

Situated in Section 19, T.10, R.15, Lee Township, Athens County, Ohio and being more particularly described as follows:

Beginning at a point in State Route 143, said point bearing North, 900 feet and West, 1270 feet from the South-west Corner of Section 19;

thence, along the limited access line of State Route 32, South 87 degrees 53 minutes 45 seconds East, a distance of 30.00 feet to a point;

thence North 36 degrees 06 minutes 01 second East, a distance of 171.58 feet;

thence North 71 degrees 53 minutes 57 seconds East, a distance of 263.23 feet to an iron pin set;

thence, leaving the Limited Access Line of State Route 32, South 20 degrees 18 minutes 37 seconds East, a distance of 759.05 feet to an iron pin set;

thence South 69 degrees 19 minutes 51 seconds West, a distance of 766.00 feet to a point in State Route 143, passing an iron pin set at 736.00 feet;

thence, along State Route 143, North 5 degrees 18 minutes 29 seconds East, a distance of 188.86 feet;

thence North 6 degrees 10 minutes 07 seconds East, a distance of 256.14 feet;

thence North 4 degrees 48 minutes 45 seconds East, a distance of 321.34 feet to the POINT OF BEGINNING; said described tract containing 10.03 acres.

Subject to all easements and rights of way of record.

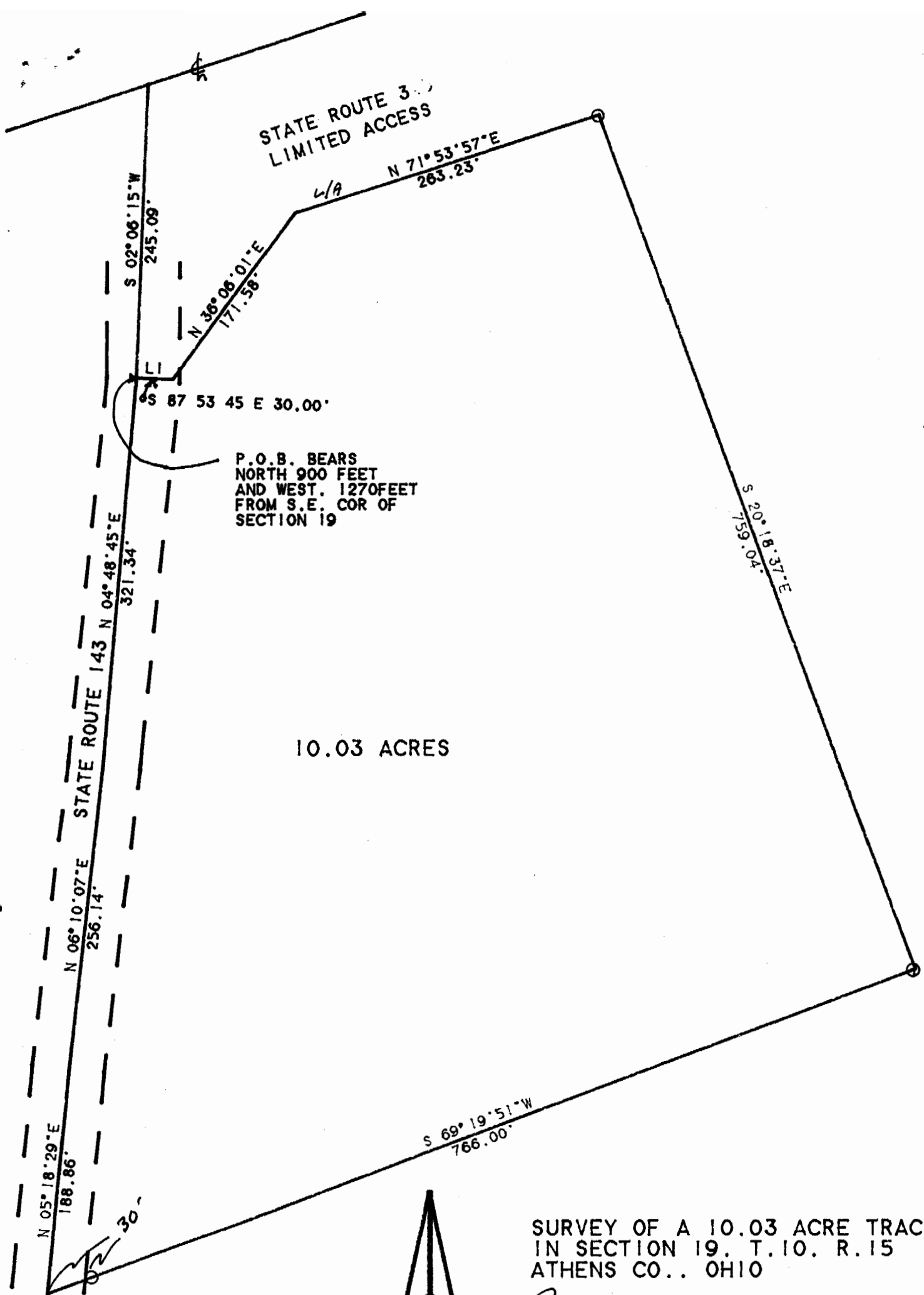
  
John M. Branner P.S. 6805

Description checked for  
Mathematical Accuracy  
ATHENS COUNTY  
ENGINEER'S OFFICE  
BY: S. Blayser  
DATE: 4-11-94



80

Lee #19



SURVEY OF A 10.03 ACRE TRACT  
IN SECTION 19, T.10. R.15  
ATHENS CO., OHIO

*John M. Branner*  
JOHN M. BRANNER P.S. 6805  
12500 N. PEACH RIDGE ROAD  
ATHENS, OHIO 592-5778

SCALE 1 INCH = 100 FEET  
O - IRON PIN SET

