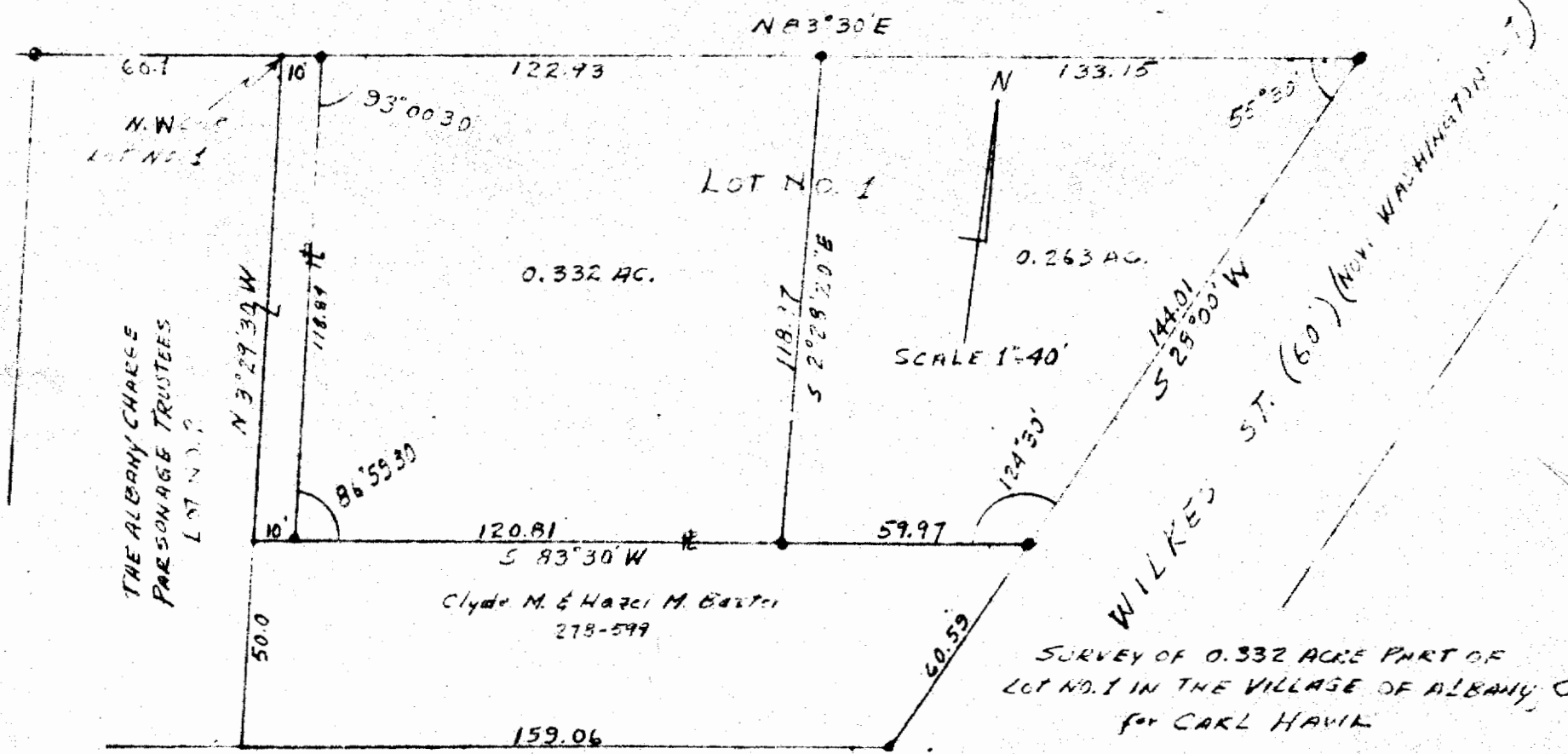


LEE STREET (49.5')



SURVEY OF 0.332 ACRES PART OF
 LOT NO. 1 IN THE VILLAGE OF ALBANY,
 FOR CARL HAVIK

SURVEYED FEB 23, 1974
 BY HAROLD D. WHALEY
 Harold D. Whaley
 REG. SURV. NO. 4986

126

THE ALBANY CHURCH
 PARSONAGE & TRUSTEES
 LOT NO. 2

Clyde M. & Hazel M. Baxter
 278-599

50.0

N 3° 29' 30" W
 118.97

60.7

N.W. CORNER
 LOT NO. 1

10

93° 00' 30"

122.93

N 83° 30' E

LOT NO. 1

0.332 AC.

0.263 AC.

SCALE 1"=40'

N

133.15

55° 50'

144.01
 S 25° 00' W

WILKES
 ST. (60') (NOW WASHINGTON ST.)

124° 30'

59.97

120.81
 S 83° 30' W

159.06

WILLOW ALLEY (16.5')