

DESCRIPTION OF A 26.79 ACRE TRACT (Tract "A")

Situated in Fractions 18, and 36 of T.10, R.15, Lee Township, Athens County, Ohio and being more particularly described as follows:

Commencing at the South-east corner of Fraction 18, thence South 89 degrees 25 minutes 07 seconds West, a distance of 1320.00 feet to an iron pin set;

thence North 0 degrees 45 minutes 58 seconds West, a distance of 146.64 feet to an iron pin set and being the POINT OF BEGINNING:

thence North 0 degrees 46 minutes 08 seconds West, a distance of 2085.48 feet to an iron pin set;

thence North 89 degrees 35 minutes 02 seconds East, a distance of 504.24 feet to an iron pin set;

thence South 0 degrees 46 minutes 07 seconds East, a distance of 1001.44 feet to an iron pin set;

thence North 90 Degrees 00 Minutes East, a distance of 3046.02 feet to a point in County Road 10, passing an iron pin set at 3016.02 feet;

thence, along said road, South 10 degrees 31 minutes 21 seconds West, a distance of 20.34 feet;

thence South 90 degrees 00 minutes 00 seconds West, a distance of 2437.27 feet to an iron pin set;

thence South 45 degrees 43 minutes 06 seconds West, a distance of 1529.11 feet to the POINT OF BEGINNING; said described tract containing 26.791 acres.

Subject to all easements and rights of way of record.

All iron pins set are 5/8 inch by 30 inch long rebar.

The above description is based on a field survey completed August 1996 by John M. Branner P.S. 6805

*Lee Twp.*

Map has been checked for  
mathematical accuracy  
ATHENS COUNTY  
SHERIFF'S OFFICE  
*Donna M. Leav*  
8-16-96

*58 #21*

DESCRIPTION OF A 26.79 ACRE TRACT (TRACT "B")

Situated in Fractions 18, and 36 of T.10, R.15, Lee Township, Athens County, Ohio and being more particularly described as follows:

Beginning at the South-east corner of Fraction 18, thence South 89 degrees 25 minutes 08 seconds West, a distance of 664.03 feet to an iron pin set;

thence South 27 degrees 31 minutes 05 seconds West, a distance of 692.08 feet to an iron pin set;

thence North 0 degrees 34 minutes 53 seconds West, a distance of 610.50 feet to an iron pin set;

thence South 89 degrees 25 minutes 07 seconds West, a distance of 330.00 feet to an iron pin set;

thence North 0 degrees 45 minutes 58 seconds West, a distance of 146.64 feet to an iron pin set;

thence North 45 degrees 43 minutes 06 seconds East, a distance of 1529.11 feet to an iron pin set;

thence North 90 degrees 00 minutes 00 seconds East, a distance of 2437.27 feet to a point in County Road 10;

thence, along said road, South 10 degrees 31 minutes 21 seconds West, a distance of 20.34 feet;

thence, leaving said road, South 90 degrees 00 minutes 00 seconds West, a distance of 2186.78 feet to an iron pin set, passing an iron pin set at 30.00 feet;

thence South 0 degrees 57 minutes 01 second West, a distance of 1181.00 feet to the POINT OF BEGINNING; said described tract containing 26.790 acres.

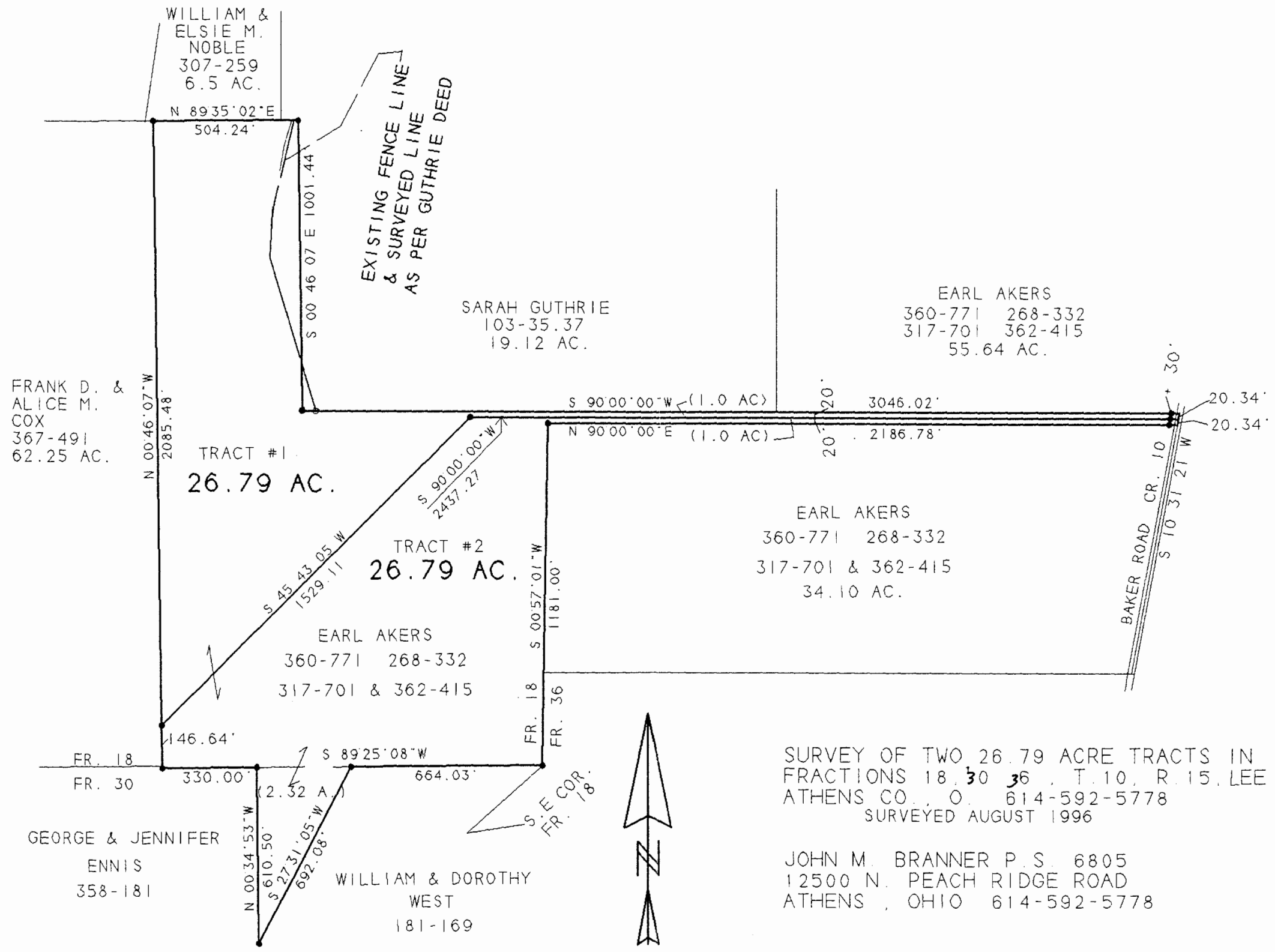
Subject to all easements and rights of way of record.

All iron pins set are 5\8 inch by 30 inch long rebar.

The above description is based on a field survey completed August 1996 by John M. Branner P.S. 6805

Description checked for  
Mathematical Accuracy  
ATHENS COUNTY  
ENGINEER'S OFFICE  
By Donna McLean  
DATE 8-16-96

59



SURVEY OF TWO 26.79 ACRE TRACTS IN  
FRACTIONS 18, 30, 36, T. 10, R. 15, LEE TWP.  
ATHENS CO., OH. 614-592-5778  
SURVEYED AUGUST 1996

JOHN M. BRANNER P.S. 6805  
12500 N. PEACH RIDGE ROAD  
ATHENS, OHIO 614-592-5778

1 INCH = 400 FEET  
● = IRON PIN SET  
○ = IRON PIN FOUND  
ASSUMED BEARINGS  
TO BE USED TO DENOTE  
ANGLE

63

62