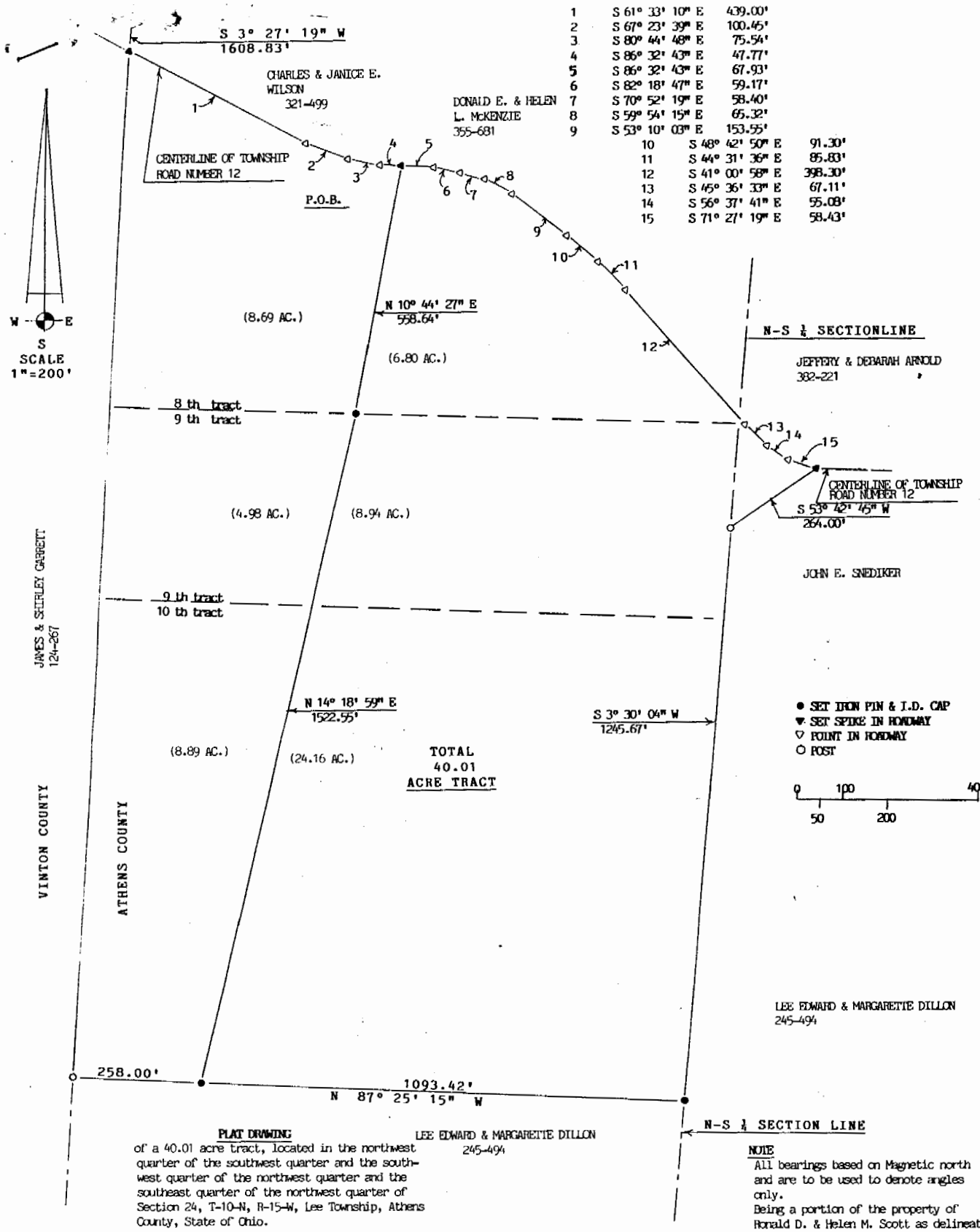


24



VINTON COUNTY
ATHENS COUNTY

● SET IRON PIN & I.D. CAP
 ▼ SET SPIKE IN ROADWAY
 ▽ POINT IN ROADWAY
 ○ POST

0 100 200 400
 50 200

PLAT DRAWING: LEE EDWARD & MARGARETTE DILLON 245-494
 of a 40.01 acre tract, located in the northwest quarter of the southwest quarter and the southwest quarter of the northwest quarter and the southeast quarter of the northwest quarter of Section 24, T-10-N, R-15-W, Lee Township, Athens County, State of Ohio.

NOTE
 All bearings based on Magnetic north and are to be used to denote angles only.
 Being a portion of the property of Ronald D. & Helen M. Scott as delineate in Volume 344, Page 599 of the Athens County Records Office.

Based on a actual survey of the premises in July 1989, under the direct supervision of Ronald M. Sharrett p.s. 5167.

Ronald M. Sharrett DATE *7-6-89*



Lee #24

11

R. M. SHARRETT & ASSOCIATES

LEGAL DESCRIPTION

40.01 ACRE TRACT

Being situated in the northwest quarter of the southwest quarter, southwest quarter of the northwest quarter and southeast quarter of the northwest quarter of Section 24, T-10-N, R-15-W, Lee Township, Athens County, State of Ohio and being more particularly described as follows;

Beginning at a P.K. nail, located at the intersection of the centerline of Township Road Number 12 and the westline of Section 24, P.K. nail bears, South 3° 27' 19" West, a distance of 1608.83 feet from the northwest corner of Section 24;

Thence, leaving the aforementioned westline and with the centerline of Township Road Number 12, the following four courses and distances, South 61° 33' 10" East, a distance of 439.00 feet to a point;

thence, South 67° 23' 39" East, a distance of 100.47 feet to a point;

thence, South 80° 44' 48" East, a distance of 75.54 feet to a point;

thence, South 86° 32' 43" East, a distance of 47.77 feet to a iron spike, being the PLACE OF BEGINNING of this survey;

thence, continuing with the centerline of Township Road Number 12, the following eleven courses and distances, South 86° 32' 43" East, a distance of 67.93 feet to a point;

thence, South 82° 18' 47" East, a distance of 59.17 feet to a point;

thence, South 70° 52' 19" East, a distance of 58.40 feet to a point;

thence, South 59° 54' 15" East, a distance of 65.32 feet to a point;

thence, South 53° 10' 03" East, a distance of 153.55 feet to a point;

thence, South 48° 42' 50" East, a distance of 91.30 feet to a point;

thence, South 44° 31' 36" East, a distance of 85.83 feet to a point;

thence, South 41° 00' 58" East, a distance of 398.30 feet to a point;

thence, South 45° 36' 33" East, a distance of 67.11 feet to a point;

thence, South 56° 37' 41" East, a distance of 55.08 feet to a point;

thence, South 71° 27' 19" East, a distance of 58.43 feet to a iron spike, being at the northeast corner of the Ninth Tract, which this survey is a part of;

thence, leaving the centerline of Township Road Number 12 and with the eastline of the property, which this survey is a part of, the following two courses and distances, South 53° 42' 45" West, a distance of 264.00 feet to a iron pin, being on the eastline of the westhalf of the westhalf of Section 24;

thence, with the aforementioned eastline, South 3° 30' 04" West, a distance of 1245.67 feet to a iron pin, being at the southeast corner of the Tenth Tract, of the property, which this survey is a part of;

thence, with the southline of the aforementioned Tenth Tract, North 87° 25' 15" West, a distance of 1093.42 feet to a iron pin;

thence, leaving the aforementioned southline and with the following two courses and distances, through the property, which this survey is a part of, North 14° 18' 59" East, a distance of 1522.55 feet to a iron pin;

Based on
the direct

R. M. Sharrett



R. M. SHARRETT & ASSOCIATES

LEGAL DESCRIPTION

thence, North 10° 44' 27" East, a distance of 558.64 feet to the PLACE OF BEGINNING, containing 40.01 acres more or less with 6.91 acres in Eighth Tract, 8.94 acres in Ninth Tract and 24.16 acre in Tenth Tract and being subject to all legal easements and right-of-ways.

Being a portion of the property of Ronald D. & Hellen M. Scott as delineated in Volume 344, Page 599 of the Athens County Recorders Office.

Based on a actual survey of the premises in July 1989, under the direct supervision of Ronald M. Sharrett p.s. 5167.

Ronald M. Sharrett DATE 7-6-89

Description checked for
Mathematical Accuracy
ATHENS COUNTY

Archie Steh
DATE: 7/13/89

