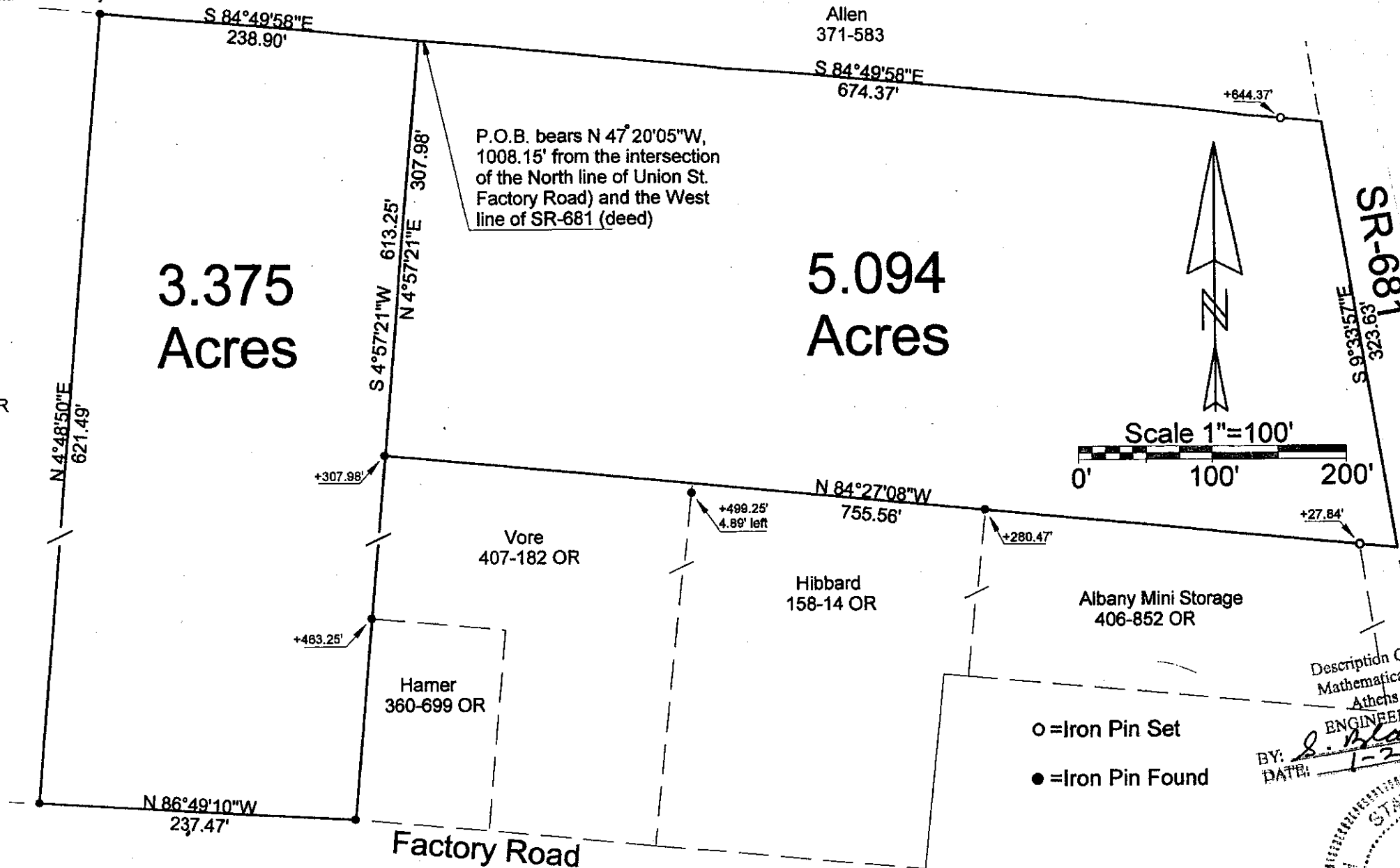


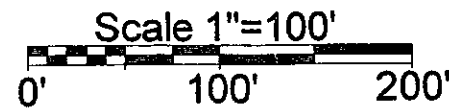
HIGHLAND SURVEYING Ltd.

Registered Professional Land Surveyor



3.375 Acres

5.094 Acres



P.O.B. bears N 47° 20' 05" W,
1008.15' from the intersection
of the North line of Union St.
Factory Road) and the West
line of SR-681 (deed)

Warmke
344-1285 OR

Allen
371-583

S 84° 49' 58" E
238.90'

S 84° 49' 58" E
674.37'

+644.37'

N 4° 48' 50" E
621.49'

S 4° 57' 21" W 613.25'
N 4° 57' 21" E 307.98'

SR-681
S 9° 33' 57" E
323.63'

+307.98'

N 84° 27' 08" W
755.56'

+499.25'
4.89' left

+280.47'

+27.84'

Vore
407-182 OR

Hibbard
158-14 OR

Albany Mini Storage
406-852 OR

+483.25'

Hamer
360-699 OR

N 86° 49' 10" W
237.47'

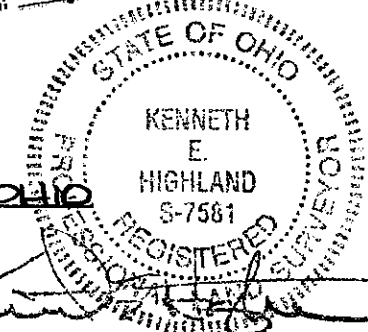
Factory Road

Description Checked for
Mathematical Accuracy
Athens County
ENGINEER'S OFFICE

o = Iron Pin Set

● = Iron Pin Found

BY: *S. Blaus*
DATE: 1-22-08



PLAT OF SURVEY OF 2 TRACTS

CORPORATION - COUNTY ATHENS STATE OHIO

SUBDIVISION -

SCALE 1" = 100' DATE JAN, 2008

TOWNSHIP LEE SECTION 3 TOWN 10 RANGE 15

REVISED

Kenneth E. Highland
80 Fayette St.
Nelsonville, Ohio 45764
740-753-1264

Kenneth E. Highland S-7581