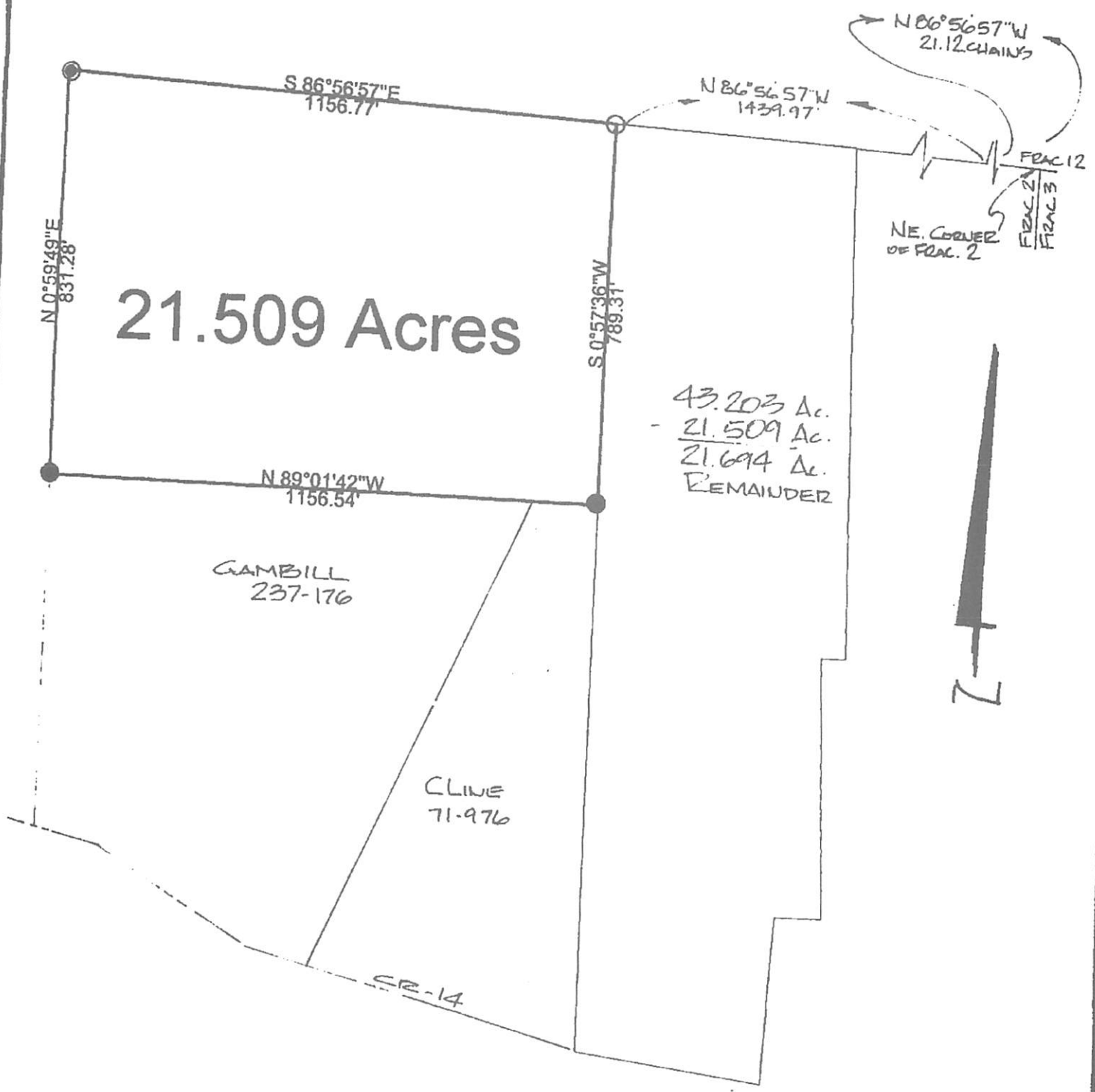


**HIGHLAND SURVEYING**

REGISTERED PROFESSIONAL LAND SURVEYOR



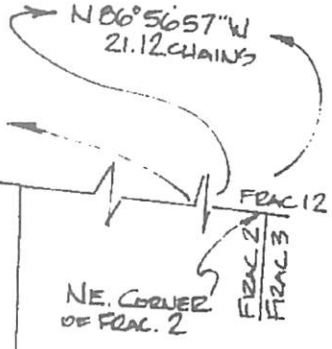
21.509 Acres

43.203 Ac.  
 - 21.509 Ac.  
 21.694 Ac.  
 REMAINDER

GAMBILL  
237-176

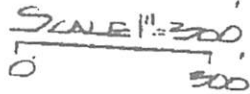
CLINE  
71-976

CR-14



- Iron Pin Set 5/8 Rebar
- Iron Pin Previously Set
- ⊙ Iron Pin Found

NOTE: THIS IS A TRAIL CORNER BETWEEN ADJOINING OWNERS.



PLAT of SURVEY OF A 21.509 AC. TRACT  
 SURVEYED for JB KING  
 SUBDIVISION \_\_\_\_\_  
 TOWNSHIP LEE SECTION 15 TOWN 10 RANGE 15  
 CORPORATION \_\_\_\_\_ COUNTY ATHENS STATE OHIO  
 SCALE 1" = 300' DATE AUG 1992

KENNETH E. HIGHLAND  
 60 FAYETTE STREET  
 NELSONVILLE, OHIO 45764  
 614-753-1204

*Kenneth E. Highland*  
 Kenneth E. Highland S-7581

