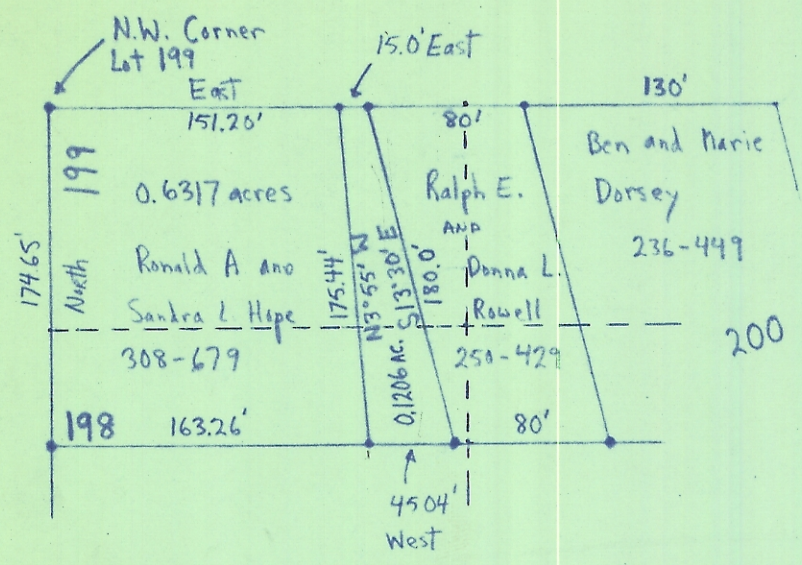


rec 3 0.1206 ac
 SW (11W)
 Lee
 310-177



Scale 1" = 100'
 ● = Iron Pin



Survey of a 0.1206 acre tract in the Village of Albany in the S.W. 1/4 of the S.W. 1/4 of Sec. 3, T. 10, R. 15, Lee Twp., Athens County, Ohio for Ralph Rowell

Surveyed July 18, 1972 by Harold D. Whaley
Harold D. Whaley

Reg. Surv. No. 4986

53.772% in Lot No. 199
 46.228% in Lot No. 198

16.03%