

BRANNER SURVEYING

MEMBER-PROFESSIONAL LAND SURVEYORS OF OHIO

PEACH RIDGE ROAD
ROUTE 3 BOX 240B
ATHENS, OHIO 45701

JOHN M. BRANNER
Registered Land Surveyor

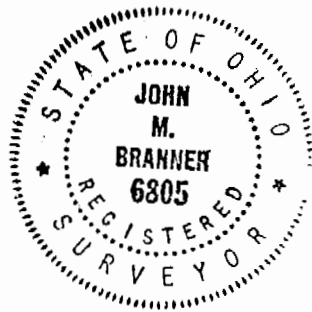
TELEPHONE
(614) 592-5778

Situated in Section 1 and 2 of T.4, R.13 Lodi Township, Athens County, Ohio and being more particularly described as follows:

Beginning at a Point that bears South, 1573.00' (deed) from the North-east corner of Section 1, thence, along Township Road 46, S 86 Degrees 55 Minutes 00 Seconds West, 1408.25 feet to a Point; thence, South 65 Degrees 21 Minutes West, 311.75 feet to a Point; thence, leaving said road North 37 Degrees 18 Minutes 25 Seconds West, 75.88 feet to an iron Pin set; Passing an iron Pin at 43.63 feet; thence, North 00 Degrees 19 Minutes 30 Seconds East, 180.34 feet to an iron Pin set; thence, North 00 Degrees 48 Minutes 18 Seconds West, 953.67 feet to an iron Pin set; thence, North 23 Degrees 19 Minutes 16 Seconds East, 48.07 feet to an iron Pin set; thence, North 00 Degrees 24 Minutes 21 Seconds East, 518.85 feet to an iron Pin set; thence, North 87 Degrees 30 Minutes 13 Seconds East, 316.00 feet to an iron Pin set; thence, South 88 Degrees 14 Minutes 10 Seconds East, 515.93 feet to an iron Pin set; thence, North 33 Degrees 26 Minutes 44 Seconds East, 69.42 feet to a Point in Township Road 44; Passing an iron Pin set at 41.81 Feet ; thence, along said road South 36 Degrees 41 Minutes 42 Seconds East, 484.18 feet; thence, South 38 Degrees 50 Minutes 57 Seconds East, 422.66 feet to a Point; thence, South 28 Degrees 53 Minutes 11 Seconds East, 61.87 feet to a Point; thence, South 14 Degrees 40 Minutes 49 Seconds East, 823.65 feet to a Point; thence, South 58 Degrees 03 Minutes 48 Seconds East, 73.64 feet to the Point of beginning and containing 52.35 acres, of which 52.21 acres are in Section 1 and 0.13 acres are in Section 2.

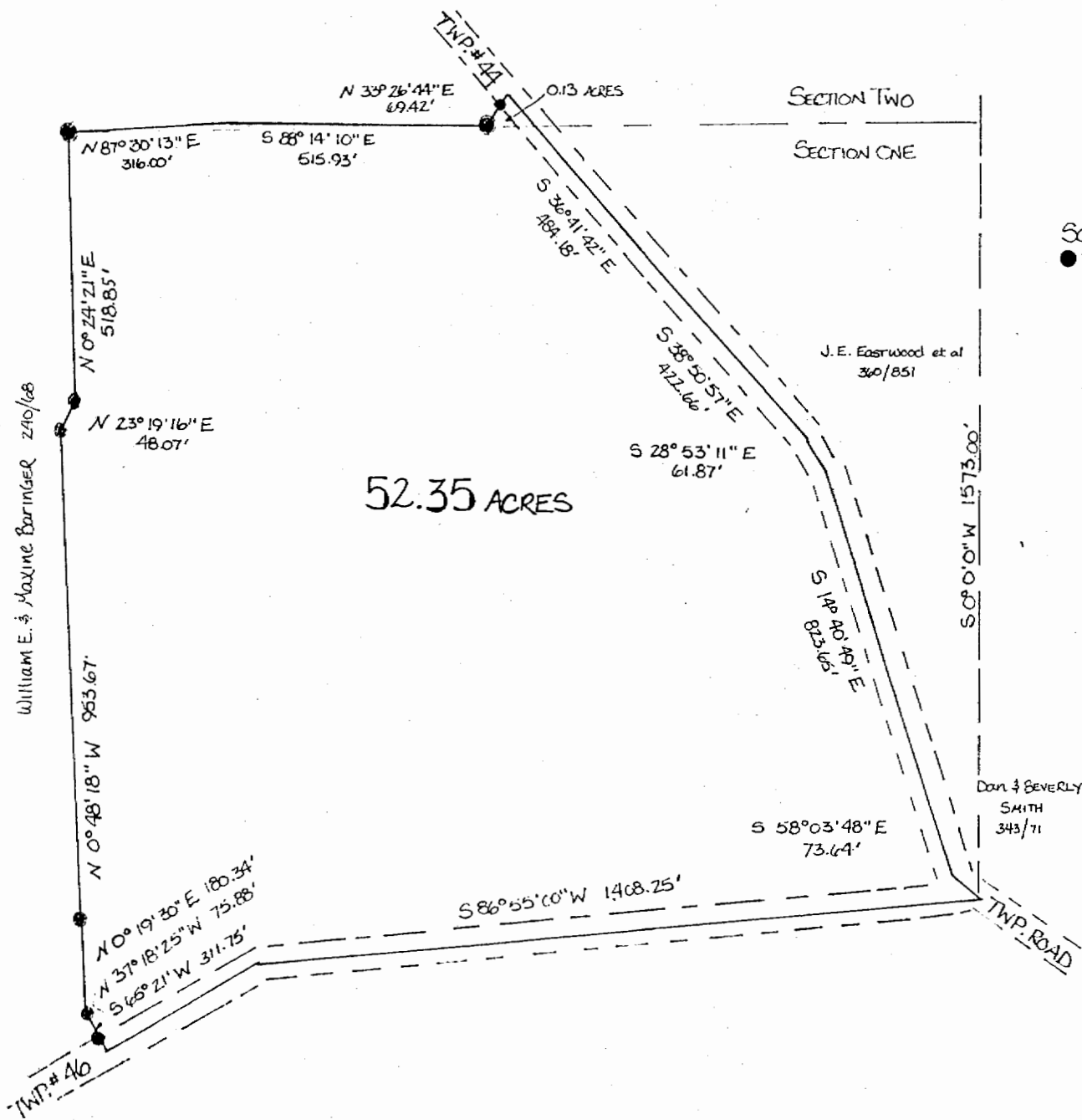
Subject to all easements and rights of way of record.

John M. Branner
John M. Branner R.L.S. 6805



Description checked for
Mathematical Accuracy
ATHENS COUNTY
ENGINEER'S OFFICE
BY: *Bob Eichenberg*
DATE: *4/15/86*

LOD#1



SCALE 1" = 200
 ● = IRON PIN SET

SURVEY OF A 52.35 ACRE TRACT
 IN SECTION 1 & 2, T. 4, R. 13, LODI
 TOWNSHIP, ATHENS COUNTY, OHIO.
 SURVEYED MARCH 1986

John M. Branner
 JOHN M. BRANNER
 REGISTERED LAND SURVEYOR # 6805
 RT. # 3 Box 240B
 ATHENS, OHIO 45701 592-5718

