

JUL 06 2017

Jill Thompson
Athens County Auditor

Description Checked for
Mathematical Accuracy
Athens County
ENGINEER'S OFFICE
BY: Die E. St
DATE: 7/6/17

DESCRIPTION OF A 56.71 ACRE TRACT

Situated in Fractions 4 and 5 of Section 10 and Section 16 of T.4, R.13, Lodi Township, Athens County, Ohio and being a part of a Tract 5 as described in Volume 517, Page 1936 of the Official Records of Athens County and being more particularly described as follows:

Beginning at an iron pin found at Grantor's North-west corner , said pin bears South 03 degrees 34 minutes 50 seconds West, 1120.82 feet from a stone found at the North-east corner of Section 16;

Thence, along the line of Susan Sylvia Trustee (300-1203 O.R.)
S 87° 22' 48" E, 1121.34 feet to a beech tree corner, passing iron pins found at 710 feet and 1102.34 feet;

Thence, along the lines of Thompson (334-513 D.R.):

S 25° 52' 44" W, 1207.14 feet;

S 26° 52' 44" W, 681.95 feet to an iron pin set in Moore Road;

Thence, with the center of Moore Road:

S 24° 52' 26" W, 196.40 feet;

S 17° 37' 41" W, 139.57 feet;

S 5° 44' 14" E, 270.76 feet;

S 1° 54' 05" W, 133.42 feet;

S 9° 19' 59" E, 66.24 feet;

S 16° 04' 10" E, 106.46 feet;

S 24° 07' 29" W, 165.62 feet to a point in Shade Creek Road T.-78;

Thence, along Shade Creek Road T-78:

N 72° 39' 47" W, 99.40 feet;

N 87° 31' 16" W, 247.19 feet;

S 89° 44' 14" W, 605.92 feet;

N 70° 18' 56" W, 141.08 feet;

N 46° 46' 07" W, 148.15 feet;

Thence, merging with Sargent Road (T-80);

N 33° 21' 45" W, 594.02 feet;

Thence, leaving Sargent Road (T-80) and along an existing fence-line and the south-line of (Birt 6-908 O.R.):

N 76° 29' 49" E, 1292.85 feet to a point near a creek;

Thence, along the East-lines of Birt (6-908 O.R.) and Bircher Trustees et. al. (509-199 O.R.):

N 3° 16' 52" E, 1796.78 feet (passing an iron pin set in old fence post at 24.03 feet) to the point of beginning and containing 56.74 acres of which 19.27 acres are in Section 16 (J010010016000), 14.87 acres are in Fr. 4 (J010010016100) and 22.57 acres are in Fr.5 (J010010016200).


Subject to all easements and rights of way of record.

Iron pins set are 5/8 inch by 30 inch long rebar w/ plastic I.D. Cap stamped Branner P.S. 6805

Bearing : Grid North- N.A.D. 83

The above description is based on a field survey completed July 2017 by

John M. Branner P.S. 6805



Description Checked for
Mathematical Accuracy
Athens County
ENGINEER'S OFFICE

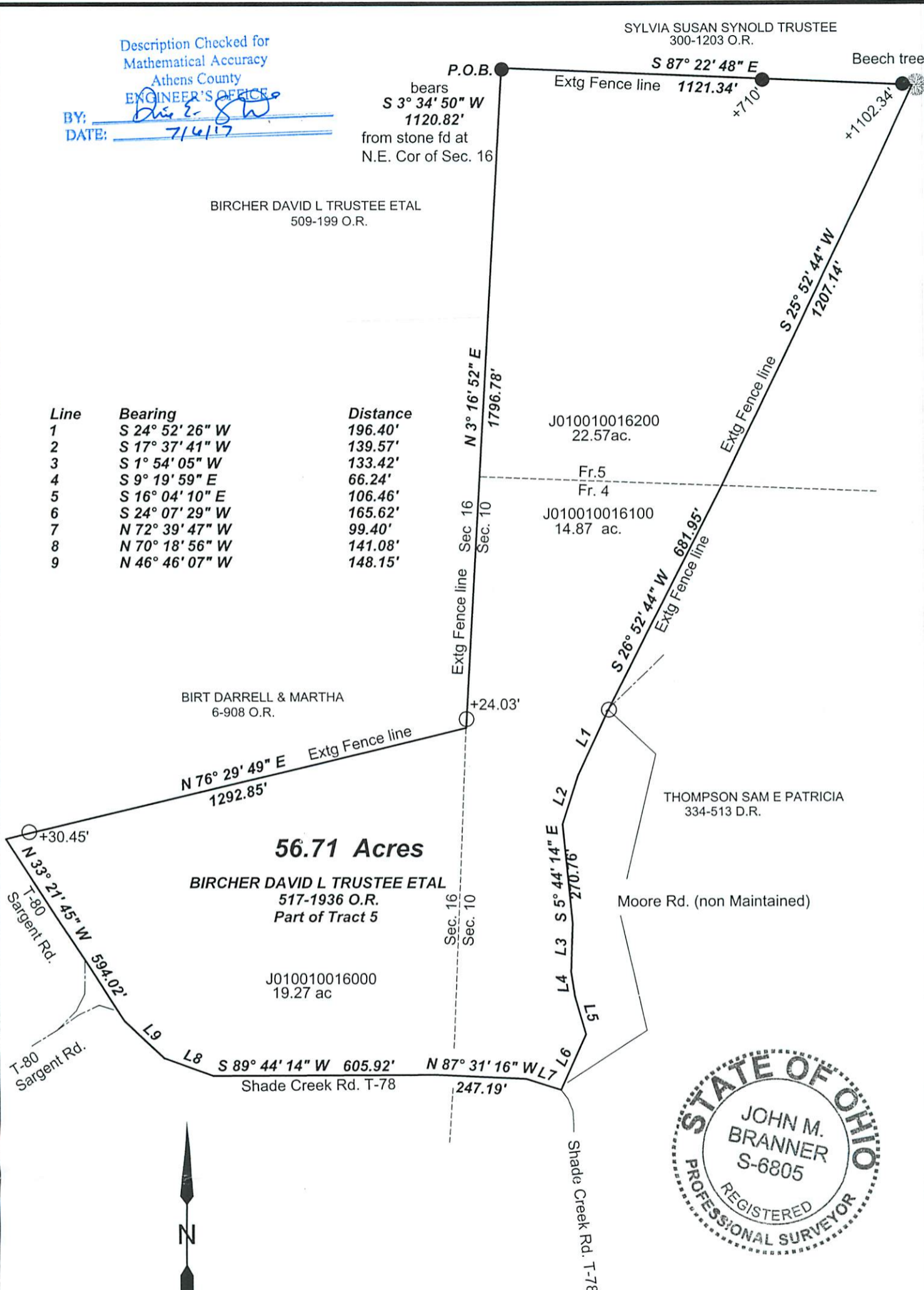
BY: John M. Branner
DATE: 7/4/17

SYLVIA SUSAN SYNOLD TRUSTEE
300-1203 O.R.

P.O.B. bears
S 3° 34' 50" W
1120.82'
from stone fd at
N.E. Cor of Sec. 16

BIRCHER DAVID L TRUSTEE ETAL
509-199 O.R.

Line	Bearing	Distance
1	S 24° 52' 26" W	196.40'
2	S 17° 37' 41" W	139.57'
3	S 1° 54' 05" W	133.42'
4	S 9° 19' 59" E	66.24'
5	S 16° 04' 10" E	106.46'
6	S 24° 07' 29" W	165.62'
7	N 72° 39' 47" W	99.40'
8	N 70° 18' 56" W	141.08'
9	N 46° 46' 07" W	148.15'



Survey of a 56.71 Acre Tract
Situated in Fr. 4&5 of Sec 10 &
Sec. 16 , T.4, R.13,
Lodi Twp., Athens Co., Ohio
Surveyed July 2017

By: John M. Branner
John M. Branner P.S. 6805
P.O. Box 274
The Plains, Ohio 45780



Scale 1 inch = 300 feet
○ = iron pin set 5/8"x30" rebar w/ plastic I.D. Cap
● = iron pin found
Bearings: N.A.D. 83 Grid North - Ohio South Zone
Ref. Docs.: Tax Plat, Deeds, Surveys