

BRANNER SURVEYING

MEMBER-PROFESSIONAL LAND SURVEYORS OF OHIO

12500 N. PEACH RIDGE ROAD
ATHENS, OHIO 45701

TELEPHONE
(614) 592-5778

JOHN M. BRANNER
Registered Land Surveyor

DESCRIPTION OF A 25.488 ACRE TRACT

Situated in Section 11, T.4, R.13, Lodi Township, Athens County, Ohio and being a part of a tract of land as described in Volume 176, Page 516, Athens County Deed Records and being more particularly described as follows:

BEGINNING at the North-west corner of the South-west Quarter of Section 11;
thence South 83 degrees 46 minutes 41 seconds East, a distance of 921.86 feet to an iron post;
thence North 37 degrees 49 minutes 59 seconds East, a distance of 376.73 feet fence corner;
thence North 89 degrees 36 minutes 02 seconds East, a distance of 599.39 feet to a fence corner;
thence South 1 degrees 51 minutes 27 seconds West, a distance of 308.22 feet to an iron pin;
thence North 85 degrees 50 minutes 08 seconds West, a distance of 518.18 feet to an iron pin;
thence South 29 degrees 45 minutes 30 seconds West, a distance of 195.57 feet to an iron pin;
thence South 6 degrees 51 minutes 12 seconds West, a distance of 204.73 feet to an iron pin;
thence South 0 degrees 44 minutes 22 seconds West, a distance of 272.71 feet to an iron pin;
thence South 16 degrees 24 minutes 22 seconds East, a distance of 231.44 feet to a point in County Road 42;
thence, along County Road 42, South 72 degrees 41 minutes 33 seconds West, a distance of 361.14 feet;
thence, leaving said road, North 9 degrees 45 minutes 13 seconds West, a distance of 20.21 feet to an iron pin;
thence North 14 degrees 51 minutes 07 seconds West, a distance of 452.23 feet to an iron pin;
thence South 53 degrees 34 minutes 05 seconds West, a distance of 551.37 feet to a point in County Road 75;
thence, along said road North 53 degrees 40 minutes 01 second West, a distance of 24.12 feet;
thence North 55 degrees 05 minutes 35 seconds West, a distance of 224.90 feet to a railroad spike;
thence North 50 degrees 44 minutes 21 seconds West, a distance of 167.02 feet to a railroad spike;
thence, leaving said road, North 6 degrees 53 minutes 48 seconds East, a distance of 670.38 feet to the POINT OF BEGINNING, said described tract containing 25.488 acres.
Subject to all easements and rights of way of record.

Lodi Twp - Sect - 11

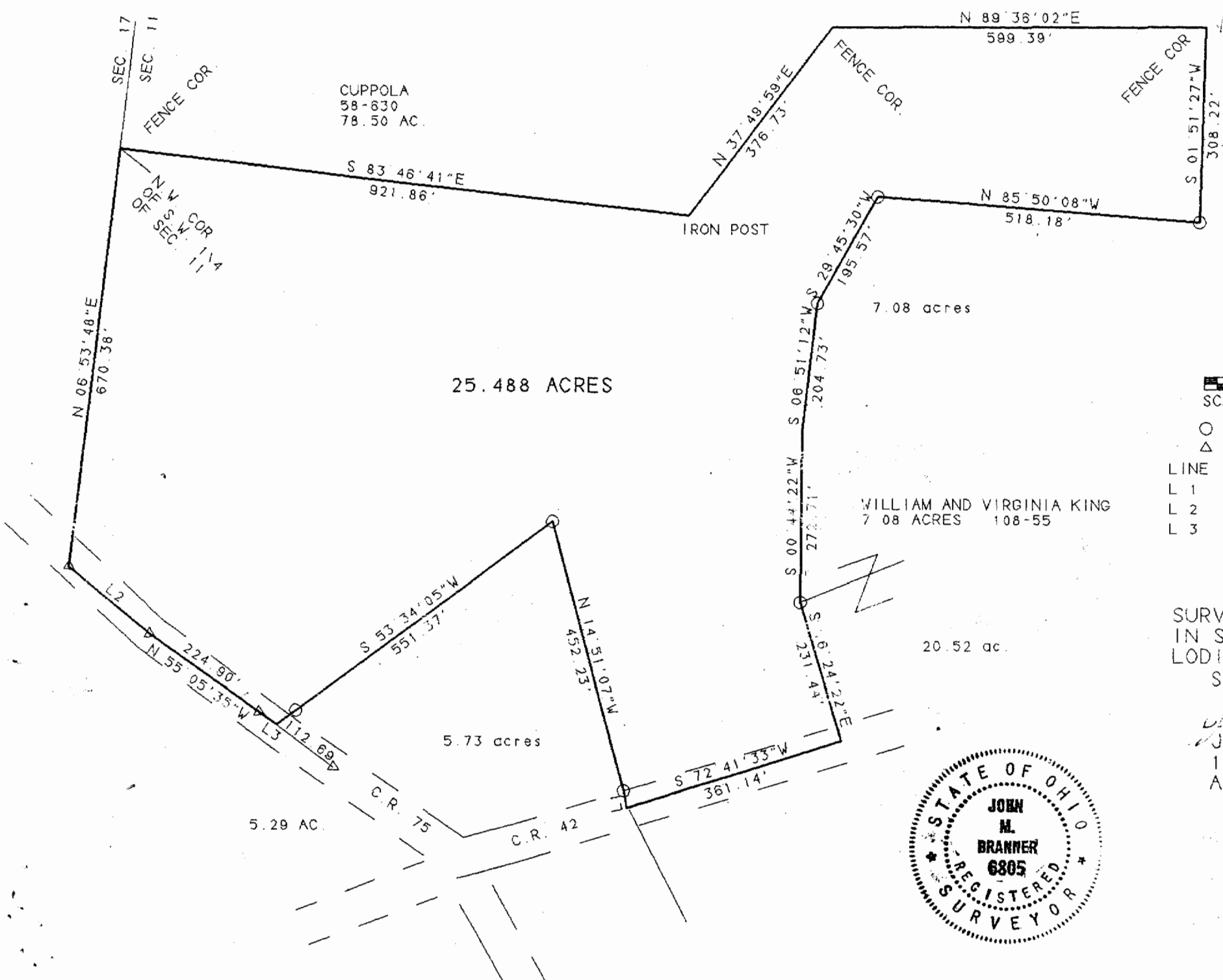
Map checked for
Accuracy
ATHENS COUNTY
SURVEYS OFFICE

Denise McLean
1-3-97

John M. Branner
John M. Branner P.S. 6805



2



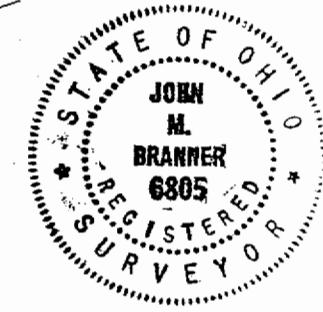
SCALE 1 INCH = 200 FEET

○ = EXISTING IRON PIN
 △ = RAIL ROAD SPIKE

LINE	BEARING	DISTANCE
L 1	N 09° 45' 13" W	20.21'
L 2	N 50° 44' 21" W	107.02'
L 3	N 53° 40' 01" W	24.12'

SURVEY OF A 25.488 ACRE TRACT
 IN SECTION 11, T. 4, R. 13
 LODI TOWNSHIP, ATHENS CO., OHIO
 SURVEYED SEPTEMBER, 1996

John M. Branner
 JOHN M. BRANNER P.S. 6805
 12500 N. PEACH RIDGE ROAD
 ATHENS, OHIO 614-592-5778



Checked for
 Accuracy
 COUNTY
 OFFICE
Donna McLean
 1-3-97